



PRODUCT SHEET

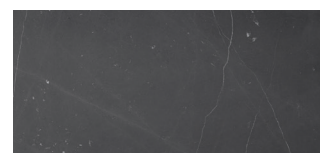
**Plinth Bridge**  
*by Norm Architects*

With its classic silhouette and modern material appeal, the Plinth Bridge is a versatile addition to any space. Made from high-grade marble or stone in a range of beautiful colours, the sleek table works independently as well as in combination with the Plinth Low and Plinth Grand podiums.

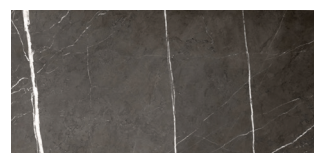


**PRODUCT OPTIONS**

**MARBLE OPTIONS**



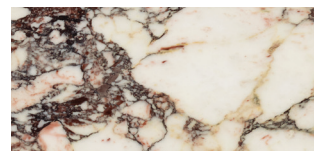
NERO MARQUINA MARBLE



GREY KENDZO MARBLE



CARRARA MARBLE



CALACATTA VIOLA MARBLE



KUNIS BRECCIA STONE

**TECHNICAL SPECIFICATIONS**

**PRODUCT TYPE**  
Lounge table

**COLLI**  
1

**ENVIRONMENT**  
Indoor

**DIMENSIONS**  
W: 100 cm / 39,3"  
D: 35 cm / 13,7"  
H: 38 cm / 14,9"

**PRODUCTION PROCESS**  
2 cm thick marble plates are cut and edges are milled at 45-degree angles before all five plates are glued together in mitre joints. Corners are reinforced by reusing excess marble from the production. The bottom plate is made from plywood, where the adjustable glides are fastened.

**COLOUR**  
Nero Marquina marble  
Grey Kendzo marble  
Carrara marble  
Calacatta Viola marble  
Kunis Breccia stone

**MATERIALS**  
Nero Marquina marble, Kendzo marble, Carrara marble, Calacatta Viola marble, Kunis Breccia stone, PA glides and MDF

**WEIGHT**  
110 kg / 242,5 lb

**TEST**  
N / A

**CERTIFICATIONS**  
TSCA title IV compliant

**Declare.**

**PACKAGING TYPE**  
Wooden crate

**PACKAGING MEASUREMENTS (H x W x D)**  
59 cm x 45 cm x 110 cm / 23,22" x 17,71" x 43,3"

**MATERIALS & MAINTENANCE**  
Please visit [menuspace.com](https://www.menuspace.com) for materials and care and maintenance instructions.

