



Upholstery Programme
2022



MENU Upholstery Programme

The MENU Upholstery Program is an overview of the textile and leathers available for MENU upholstered furniture. All textile and leather options are available in all colors. You'll find over 100 fabric and leather options, with the most popular configurations available with expedited delivery in our Quick Ship program.

Custom upholstery orders from our MENU Upholstery Program (SPEC) are ready to ship with standard delivery lead times. Our Fixed Combinations listed in this Brand Book are suggested upholsteries selected by our design team, and deliver with standard lead times. We are happy to upholster furniture using customer's own materials (COM) with extended delivery lead times, upon fabric approval. COM products are to be calculated by PCIT if in textile and PCIL if in leather, excluding the price of the fabric.

Please note that the color references in this upholstery programme are only intended as a guide. For further information please see manufacturer websites, or contact your local MENU Sales Representative for samples or further information.

kvadrat.dk
sahco.com
nevotex.com
jab.de
hbftextiles.com
danishartweaving.com
dedar.com



Upholstery Selection & Furniture

Use table to determine the upholstery options available for fabric-covered items.

	AFTERROOM COLLECTION	BRASILIA COLLECTION	CAIRN POUF	CO CHAIR COLLECTION	EAVE	HARBOUR CHAIR	HARBOUR LOUNGE CHAIR	KNITTING LOUNGE CHAIR	OFFSET	READY DINING CHAIR	TEAROOM CHAIR	TEAROOM SOFA
TEXTILE												
PRICE CATEGORY 0												
MENU Bouclé	•	•	•	•	•	•	•	•	•	•	•	•
PRICE CATEGORY 1												
Champion, JAB	•	•	•	•	•	•		•	•	•	•	•
City Velvet, JAB	•	•	•	•	•	•		•	•	•	•	•
Hot Madison Reboot, JAB	•	•	•	•	•	•	•	•	•	•	•	•
Maple, Kvadrat	•	•	•	•	•	•		•	•	•	•	•
Remix 3, Kvadrat	•	•	•	•	•	•	•	•	•	•	•	•
Re-Wool, Kvadrat	•	•	•	•	•	•	•	•	•	•	•	•
Illusion, Artificial Leather, Nevotex	•	•		•	•	•			•	•	•	•
PRICE CATEGORY 2												
Canvas 2, Kvadrat	•	•	•	•	•	•	•	•	•	•	•	•
Clay, Sahco, Kvadrat	•	•	•	•	•	•	•	•	•	•	•	•
Colline 2, Kvadrat	•	•	•	•	•	•	•	•	•	•	•	•
Fiord 2, Kvadrat	•	•	•	•	•	•	•	•	•	•	•	•
Hallingdal 65, Kvadrat	•	•	•	•	•	•	•	•	•	•	•	•
Moss, Sahco, Kvadrat	•	•	•	•	•	•	•	•	•	•	•	•
Reflect, Kvadrat	•	•	•	•	•	•		•	•	•	•	•
Savanna, Kvadrat	•	•	•	•	•	•	•	•	•	•	•	•
Steelcut 2, Kvadrat	•	•	•	•	•	•	•	•	•	•	•	•
Steelcut Trio 3, Kvadrat	•	•	•	•	•	•	•	•	•	•	•	•
PRICE CATEGORY 3												
Arctic, JAB	•	•	•	•	•	•	•	•	•	•	•	•
Safire, Sahco, Kvadrat	•	•	•	•	•	•	•	•	•	•	•	•
Vidar 4, Kvadrat	•	•	•	•	•	•	•	•	•	•	•	•
Zero, Sahco, Kvadrat	•	•	•	•	•	•	•	•	•	•	•	•
PRICE CATEGORY 4												
Doppiopanama, Dedar	•	•	•	•	•	•	•	•	•	•	•	•
Grand Mohair, Danish Art Weaving	•	•		•		•		•		•		•
Lupo, Dedar	•	•	•	•	•	•	•	•	•	•	•	•

O

Textile Category 0

MENU Bouclé

Textile

Price category 0
Materials 78% Acrylic,
20% Polyester, 2% Viscose
Martindale 60.000
Lightfastness 5-7
Pilling 4



MENU Bouclé

Textile

Price category 0
Materials 78% Acrylic,
20% Polyester, 2% Viscose
Martindale 60.000
Lightfastness 5-7
Pilling 4



02



06



08



07



15



16



20

1

Textile Category 1

Champion

Textile

Price category 1
Manufacturer JAB
Materials 100% Polyester
Martindale 70.000
Lightfastness 5



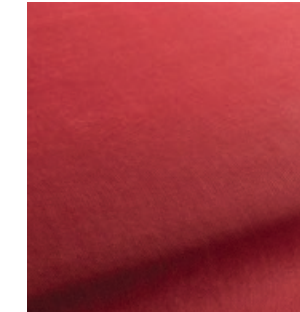
Champion

Textile

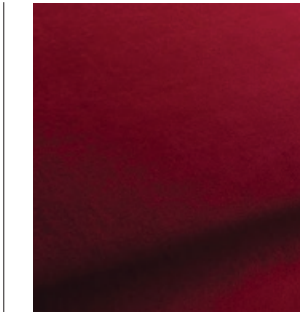
Price category 1
Manufacturer JAB
Materials 100% Polyester
Martindale 70.000
Lightfastness 5



1-3114-010



1-3114-011



1-3114-012



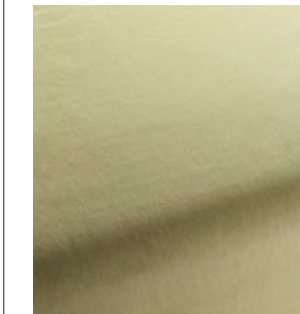
1-3114-020



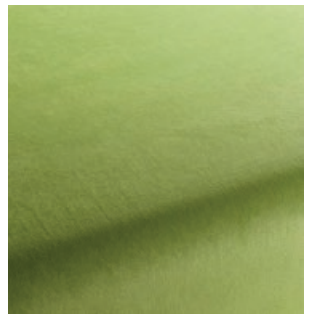
1-3114-021



1-3114-022



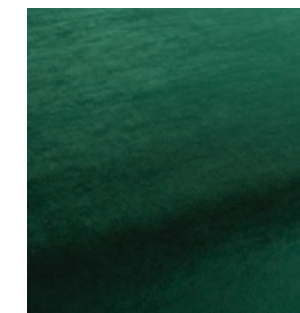
1-3114-030



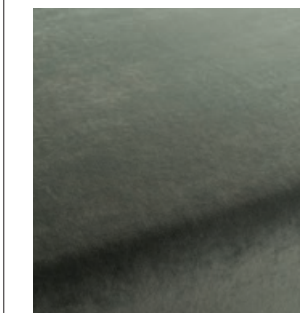
1-3114-031



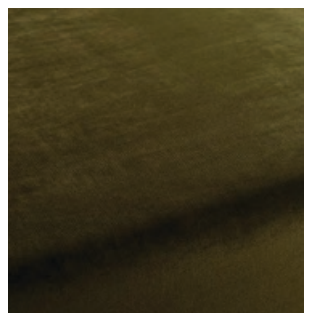
1-3114-032



1-3114-033



1-3114-034



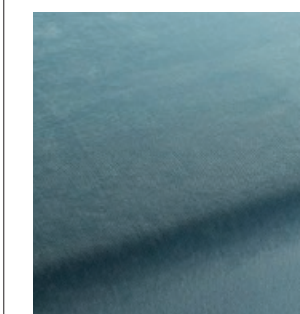
1-3114-035



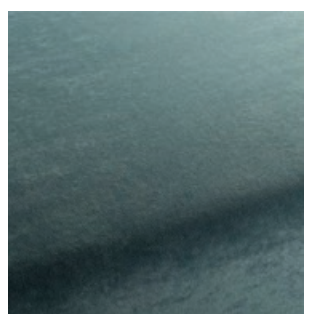
1-3114-040



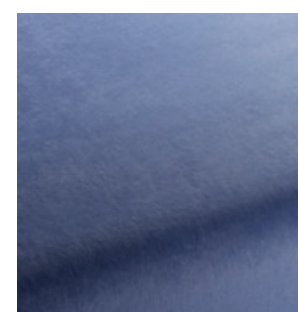
1-3114-041



1-3114-050



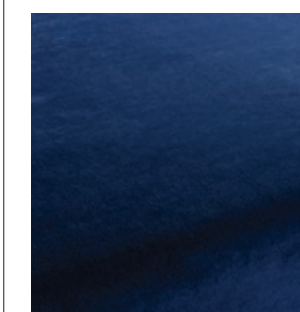
1-3114-051



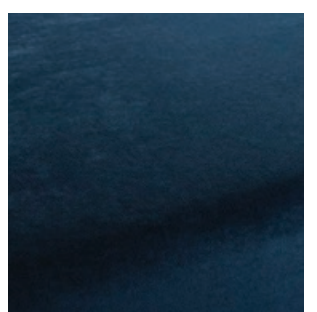
1-3114-052



1-3114-053



1-3114-054



1-3114-055

Champion

Textile

Price category 1
Manufacturer JAB
Materials 100% Polyester
Martindale 70.000
Lightfastness 5



1-3114-060



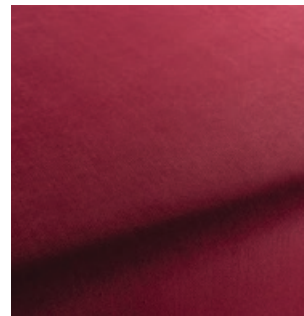
1-3114-061



1-3114-062



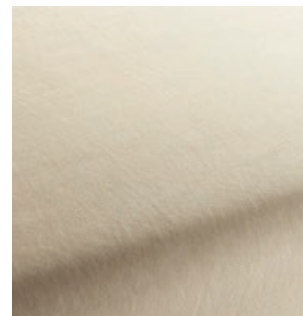
1-3114-063



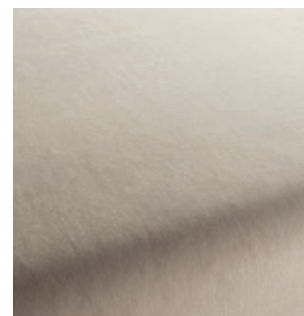
1-3114-064



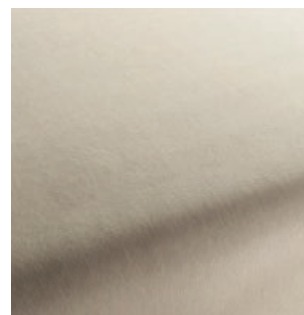
1-3114-070



1-3114-071



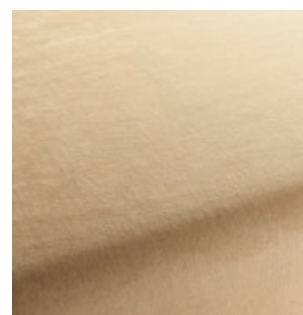
1-3114-072



1-3114-073



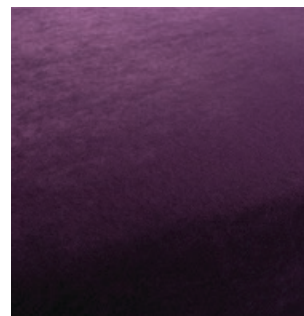
1-3114-074



1-3114-075



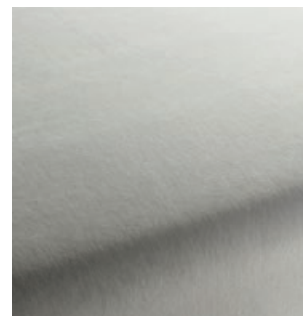
1-3114-080



1-3114-081



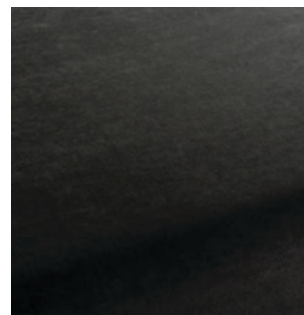
1-3114-082



1-3114-091



1-3114-092



City Velvet

Textile

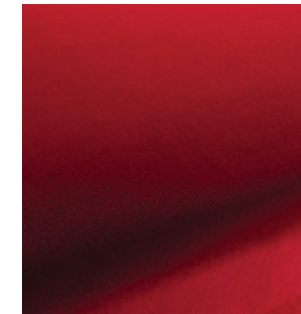
Price category 1
Manufacturer JAB
Materials 100% Polyester
Martindale 100.000
Lightfastness 3-5
Pilling 4-5



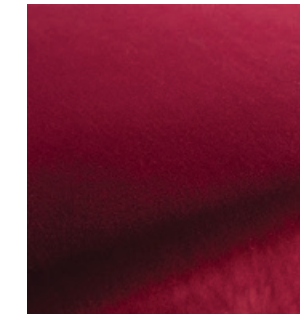
City Velvet

Textile

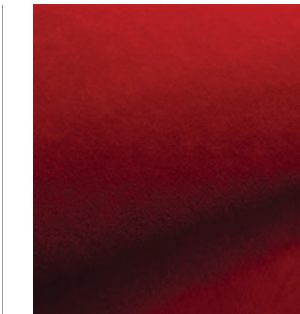
Price category 1
Manufacturer JAB
Materials 100% Polyester
Martindale 100.000
Lightfastness 3-5
Pilling 4-5



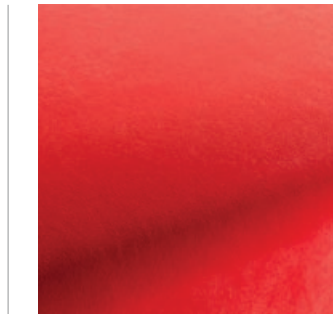
CA7832-010



CA7832-011



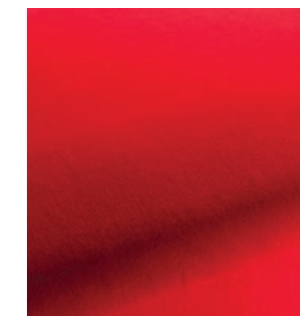
CA7832-012



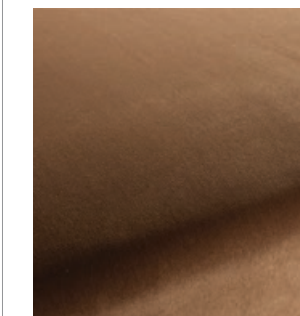
CA7832-013



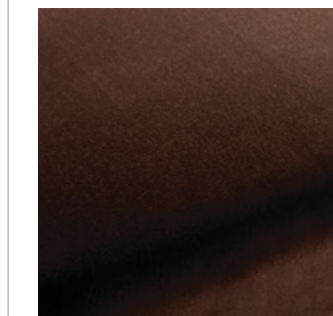
CA7832-014



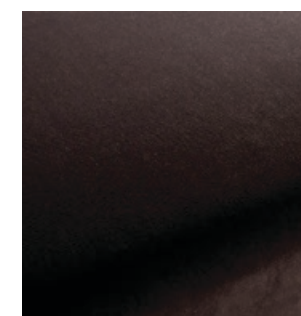
CA7832-015



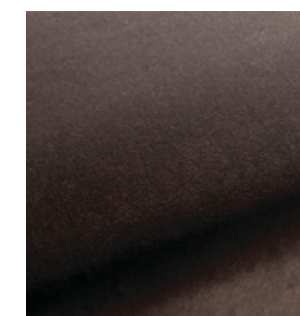
CA7832-020



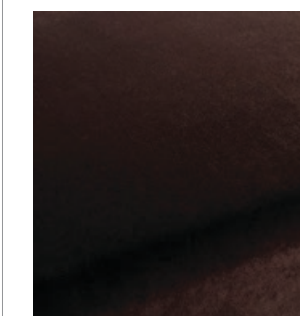
CA7832-021



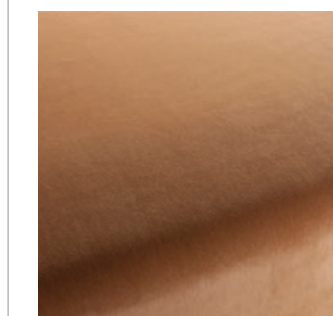
CA7832-022



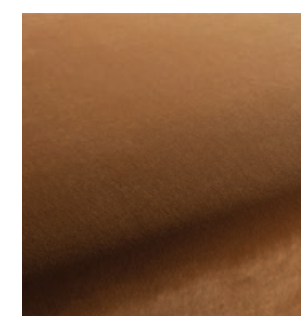
CA7832-023



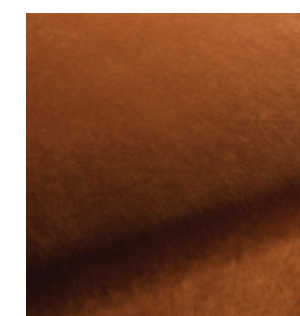
CA7832-024



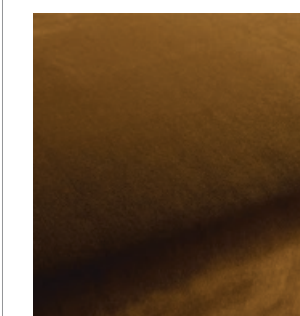
CA7832-025



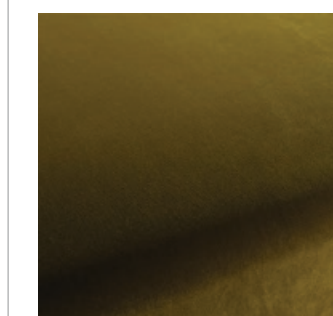
CA7832-026



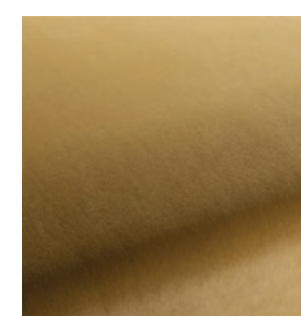
CA7832-027



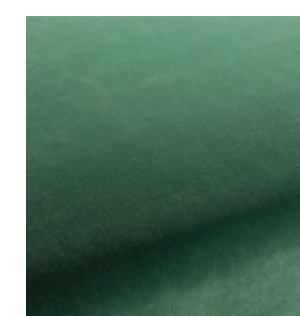
CA7832-030



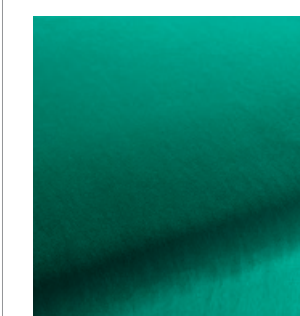
CA7832-031



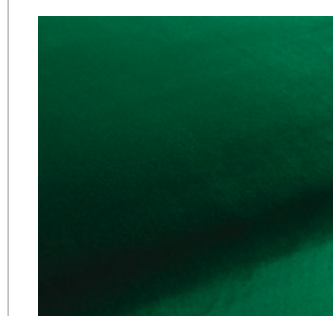
CA7832-032



CA7832-033



CA7832-034

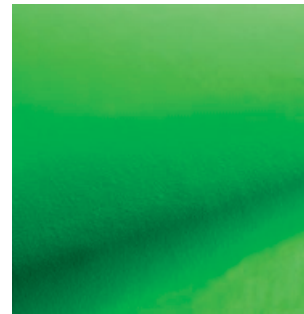


CA7832-035

City Velvet

Textile

Price category 1
Manufacturer JAB
Materials 100% Polyester
Martindale 100.000
Lightfastness 3-5
Pilling 4-5



CA7832-036



CA7832-037



CA7832-038



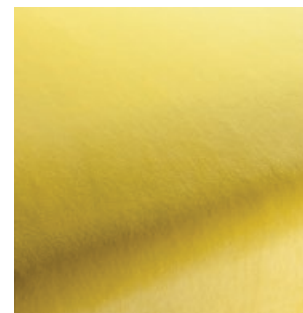
CA7832-039



CA7832-040



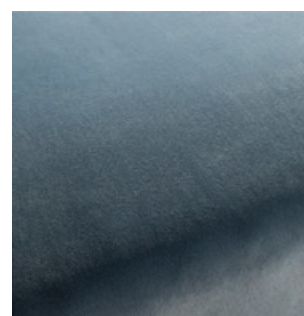
CA7832-041



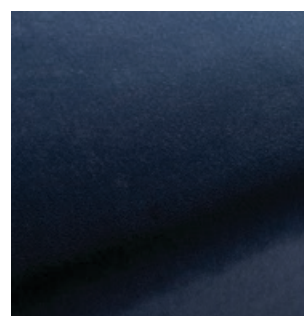
CA7832-042



CA7832-043



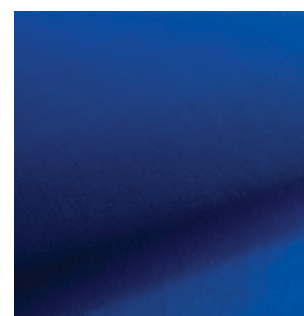
CA7832-050



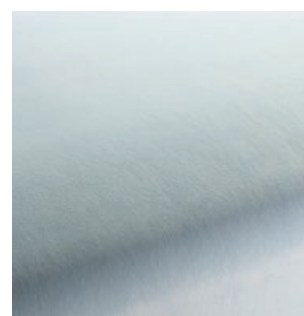
CA7832-051



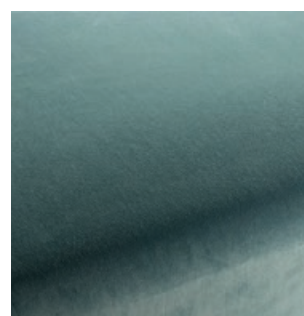
CA7832-052



CA7832-053



CA7832-055



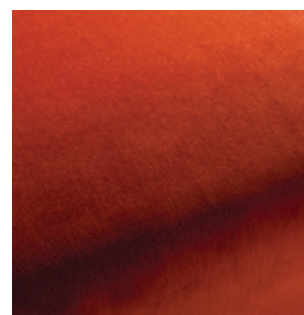
CA7832-056



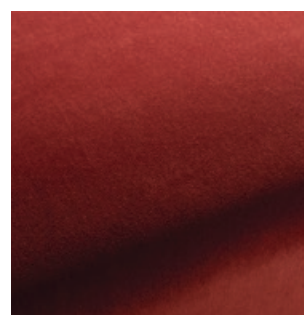
CA7832-060



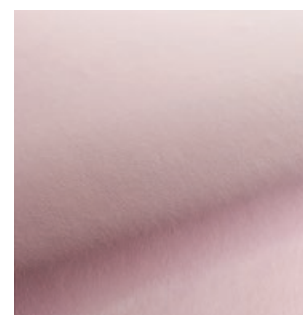
CA7832-061



CA7832-062



CA7832-063



CA7832-064



CA7832-065

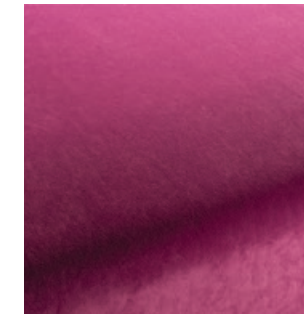
City Velvet

Textile

Price category 1
Manufacturer JAB
Materials 100% Polyester
Martindale 100.000
Lightfastness 3-5
Pilling 4-5



CA7832-066



CA7832-067



CA7832-068



CA7832-069



CA7832-070



CA7832-071



CA7832-072



CA7832-073



CA7832-074



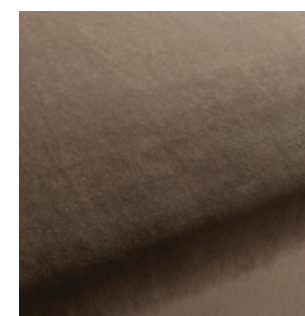
CA7832-075



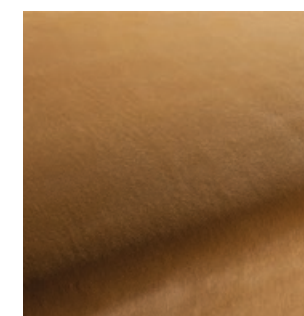
CA7832-076



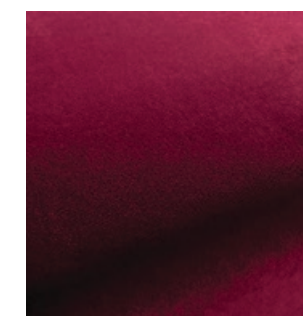
CA7832-077



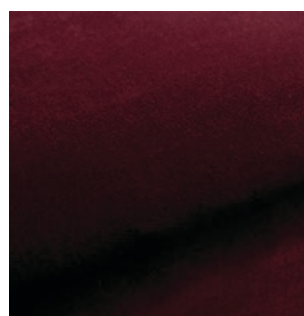
CA7832-078



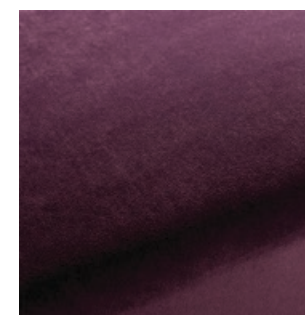
CA7832-079



CA7832-080



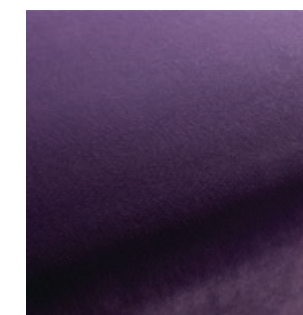
CA7832-081



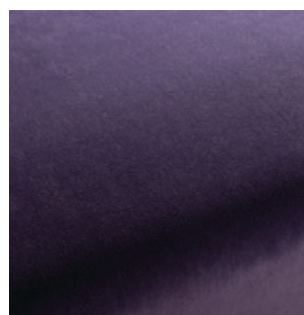
CA7832-082



CA7832-083



CA7832-084



CA7832-085

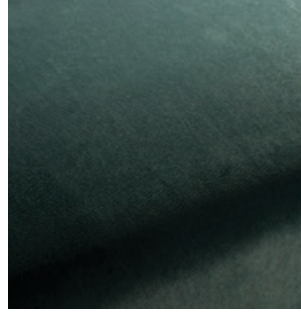
City Velvet

Textile

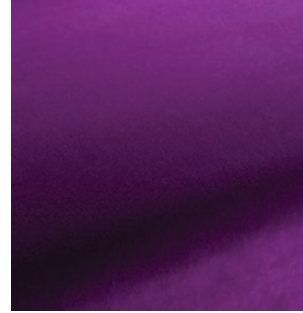
Price category 1
Manufacturer JAB
Materials 100% Polyester
Martindale 100.000
Lightfastness 3-5
Pilling 4-5



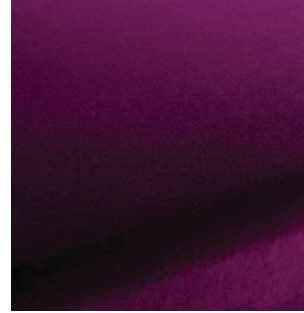
CA7832-086



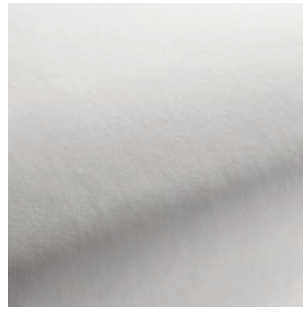
CA7832-087



CA7832-088



CA7832-089



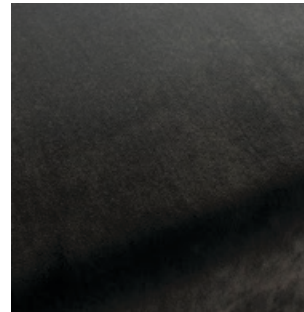
CA7832-090



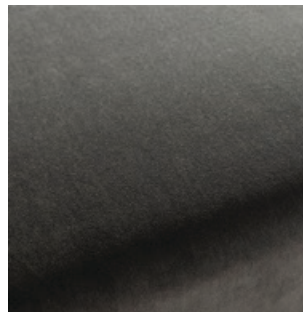
CA7832-091



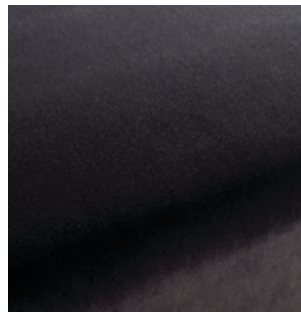
CA7832-092



CA7832-093



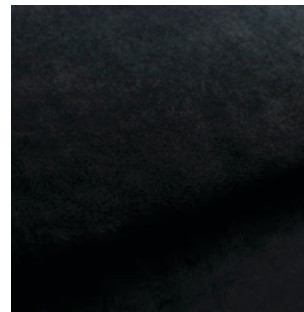
CA7832-094



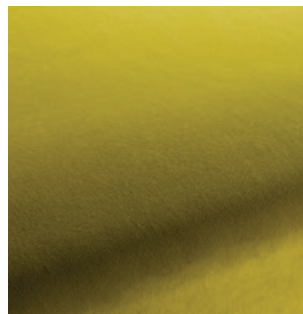
CA7832-095



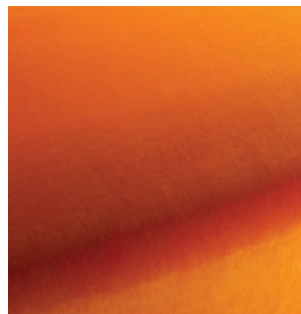
CA7832-096



CA7832-099



CA7832-130



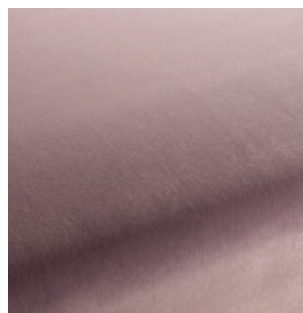
CA7832-160



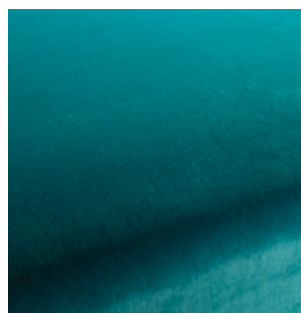
CA7832-161



CA7832-170



CA7832-180



CA7832-181

Hot Madison Reboot

Textile

Price category 1
Manufacturer JAB
Materials 63% Cotton, 37% Linen
Martindale 55.000
Lightfastness 4-5
Pilling 4-5



Hot Madison Reboot

Textile

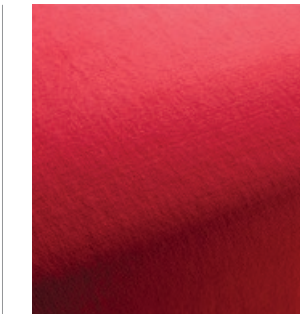
Price category 1
Manufacturer JAB
Materials 63% Cotton, 37% Linen
Martindale 55.000
Lightfastness 4-5
Pilling 4-5



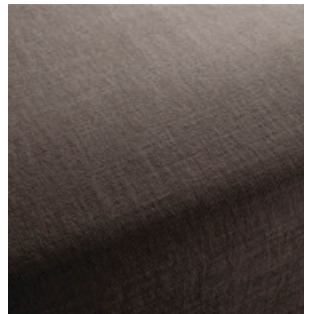
CH1249-011



CH1249-012



CH1249-013



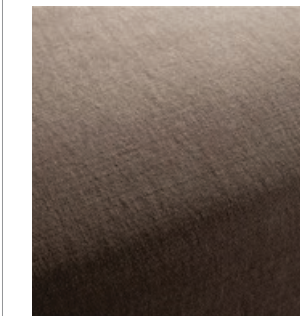
CH1249-020



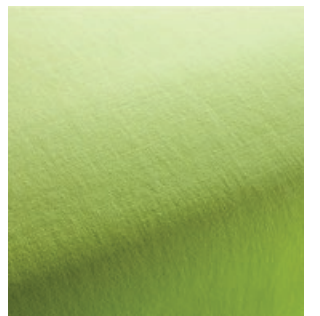
CH1249-021



CH1249-022



CH1249-023



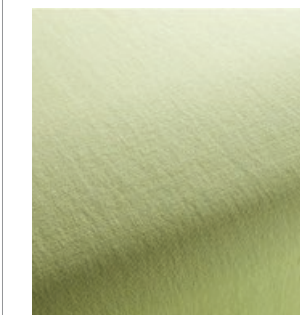
CH1249-037



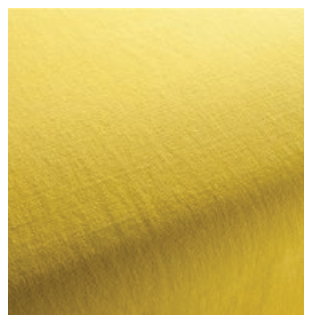
CH1249-038



CH1249-039



CH1249-043



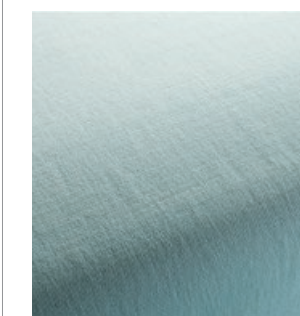
CH1249-045



CH1249-046



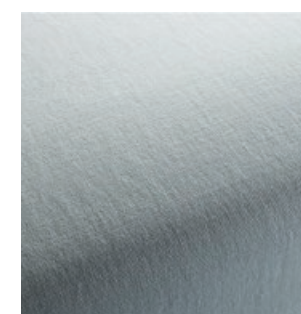
CH1249-046



CH1249-050



CH1249-052



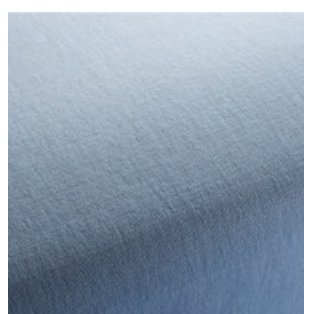
CH1249-053



CH1249-055



CH1249-056



CH1249-059

Hot Madison Reboot

Textile

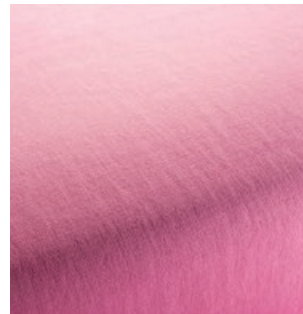
Price category 1
Manufacturer JAB
Materials 63% Cotton, 37% Linen
Martindale 55.000
Lightfastness 4-5
Pilling 4-5



CH1249-062



CH1249-063



CH1249-064



CH1249-070



CH1249-071



CH1249-072



CH1249-073



CH1249-074



CH1249-075



CH1249-076



CH1249-077



CH1249-078



CH1249-079



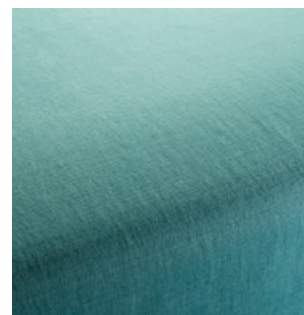
CH1249-080



CH1249-081



CH1249-082



CH1249-083



CH1249-084



CH1249-085

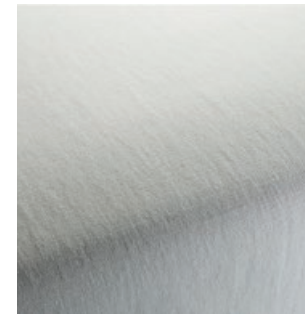


CH1249-086

Hot Madison Reboot

Textile

Price category 1
Manufacturer JAB
Materials 63% Cotton, 37% Linen
Martindale 55.000
Lightfastness 4-5
Pilling 4-5



CH1249-087



CH1249-088



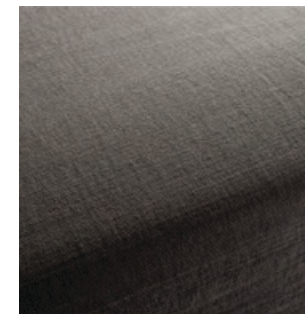
CH1249-089



CH1249-091



CH1249-092



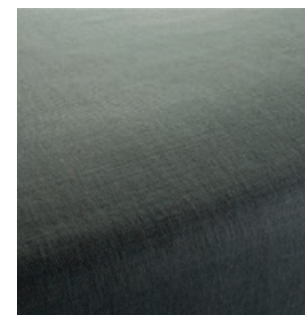
CH1249-093



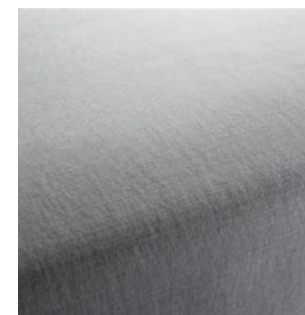
CH1249-094



CH1249-095



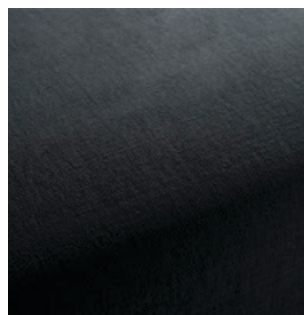
CH1249-096



CH1249-097



CH1249-098



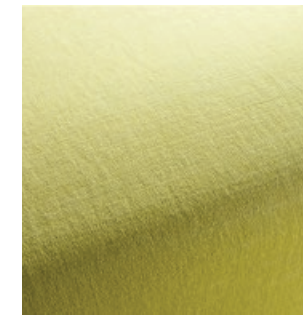
CH1249-099



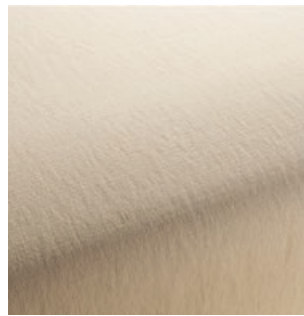
CH1249-126



CH1249-127



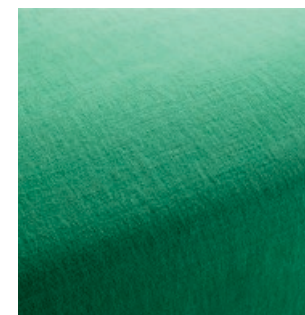
CH1249-130



CH1249-131



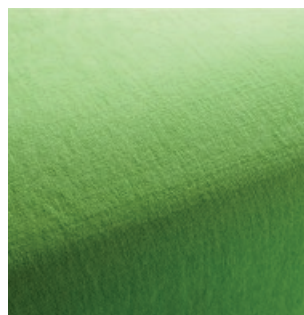
CH1249-133



CH1249-134



CH1249-135



CH1249-139

Hot Madison Reboot

Textile

Price category 1
Manufacturer JAB
Materials 63% Cotton, 37% Linen
Martindale 55.000
Lightfastness 4-5
Pilling 4-5



CH1249-155



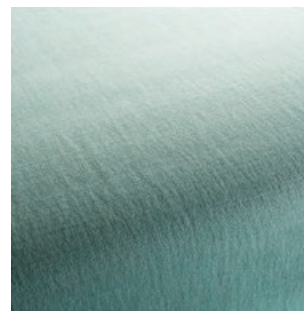
CH1249-170



CH1249-171



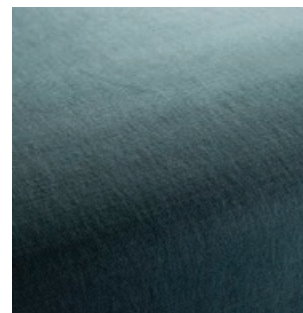
CH1249-172



CH1249-180



CH1249-181



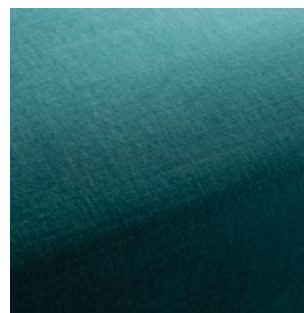
CH1249-182



CH1249-183



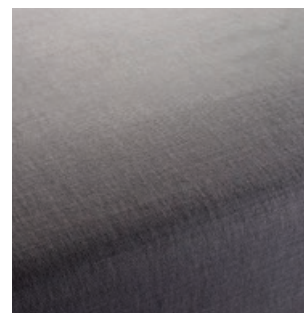
CH1249-184



CH1249-185



CH1249-186



CH1249-191



CH1249-192



CH1249-193



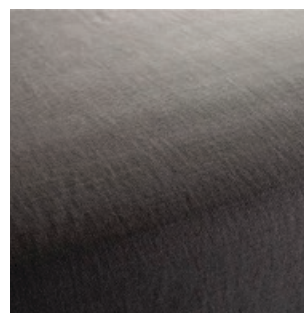
CH1249-194



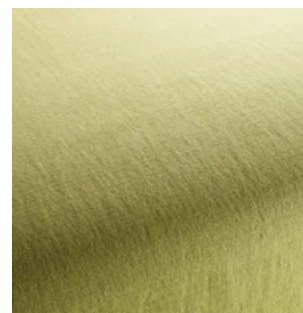
CH1249-195



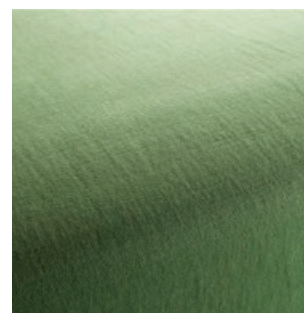
CH1249-196



CH1249-197



CH1249-230

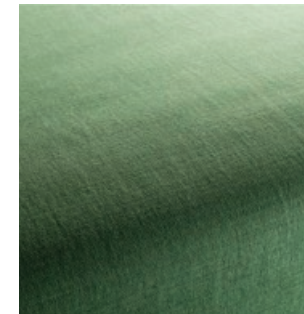


CH1249-231

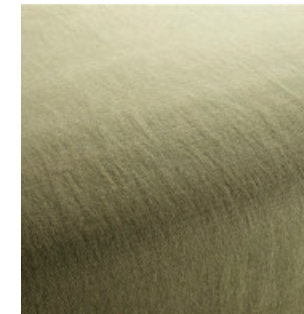
Hot Madison Reboot

Textile

Price category 1
Manufacturer JAB
Materials 63% Cotton, 37% Linen
Martindale 55.000
Lightfastness 4-5
Pilling 4-5



CH1249-232



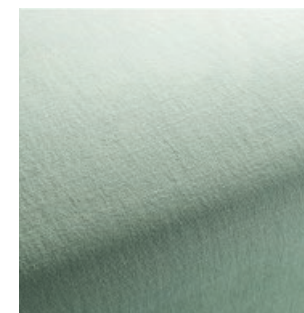
CH1249-233



CH1249-234



CH1249-245



CH1249-248



CH1249-404



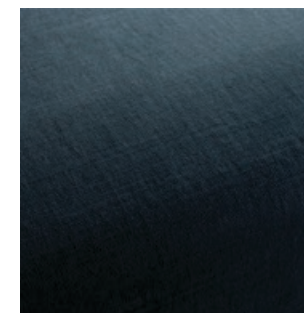
CH1249-410



CH1249-419



CH1249-420



CH1249-424



CH1249-459



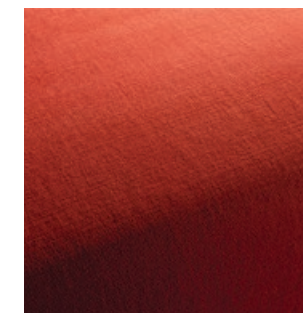
CH1249-469



CH1249-471



CH1249-476



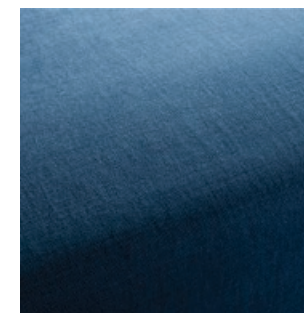
CH1249-490



CH1249-495



CH1249-497



CH1249-499



CH1249-509

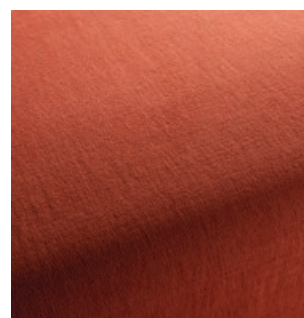


CH1249-517

Hot Madison Reboot

Textile

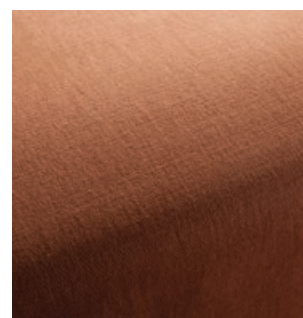
Price category 1
Manufacturer JAB
Materials 63% Cotton, 37% Linen
Martindale 55.000
Lightfastness 4-5
Pilling 4-5



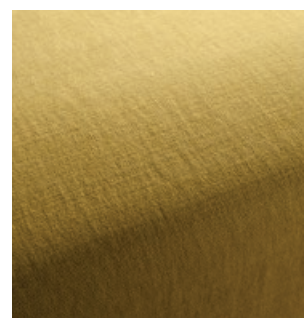
CH1249-521



CH1249-524



CH1249-525



CH1249-528



CH1249-694-



CH1249-695



CH1249-696



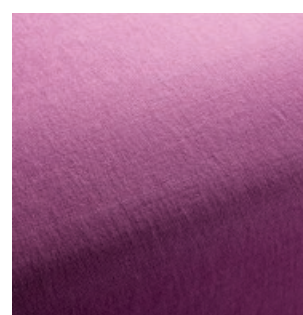
CH1249-697



CH1249-698



CH1249-699



CH1249-700



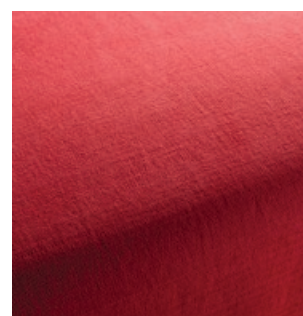
CH1249-701



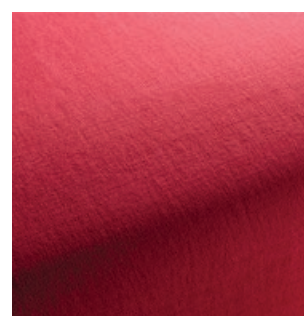
CH1249-702



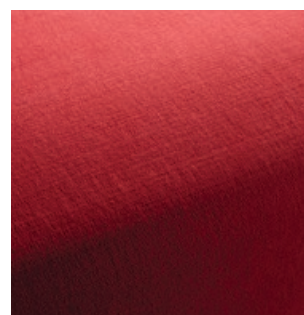
CH1249-703



CH1249-704



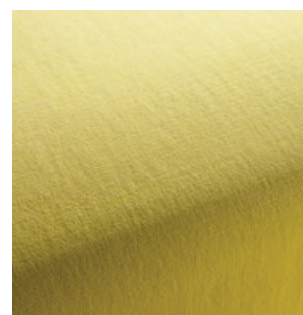
CH1249-705



CH1249-706



CH1249-707



CH1249-708

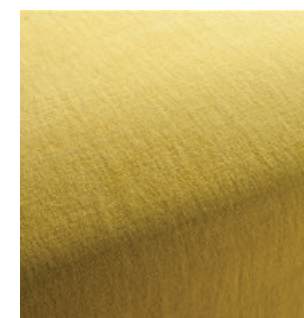


CH1249-709

Hot Madison Reboot

Textile

Price category 1
Manufacturer JAB
Materials 63% Cotton, 37% Linen
Martindale 55.000
Lightfastness 4-5
Pilling 4-5



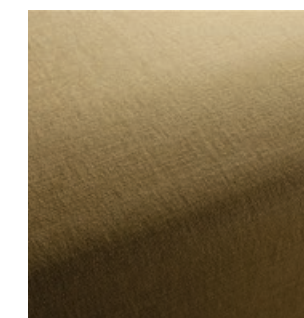
CH1249-710



CH1249-711



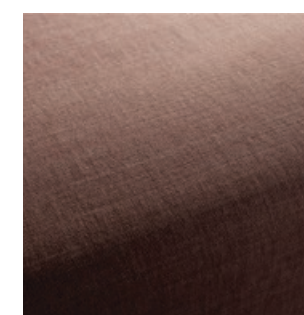
CH1249-712



CH1249-713



CH1249-714



CH1249-715



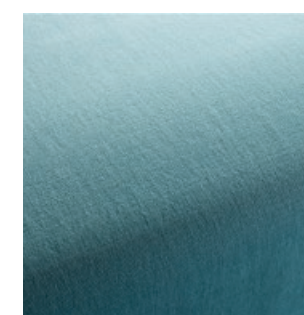
CH1249-716



CH1249-717



CH1249-718



CH1249-719



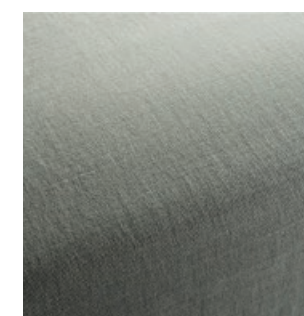
CH1249-720



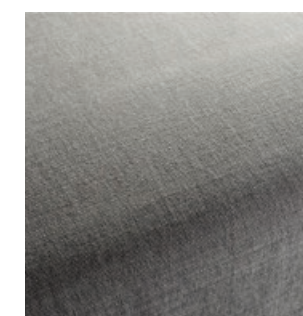
CH1249-721



CH1249-722



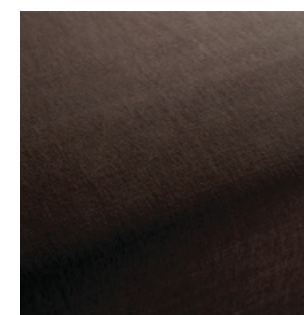
CH1249-723



CH1249-724



CH1249-725



CH1249-884



CH1249-893



CH1249-894

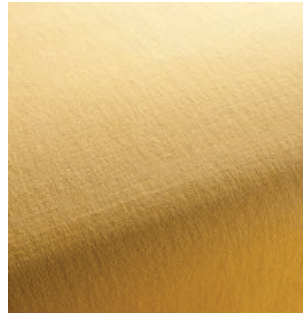


CH1249-896

Hot Madison Reboot

Textile

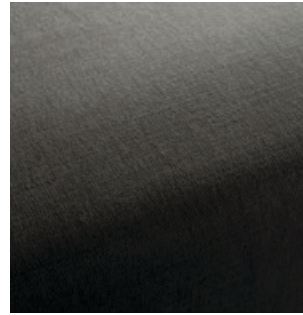
Price category 1
Manufacturer JAB
Materials 63% Cotton, 37% Linen
Martindale 55.000
Lightfastness 4-5
Pilling 4-5



CH1249-897



CH1249-898



CH1249-934



CH1249-987



CH1249-988



CH1249-989



CH1249-990



CH1249-991



CH1249-992



CH1249-993



CH1249-994

Maple

Textile

Price category 1
Manufacturer Kvadrat
Materials 81% Viscose, 15% Linen,
4% Non-woven Polyester backing
Martindale 30.000
Lightfastness 5-7
Pilling 5



Maple

Textile

Price category 1
Manufacturer Kvadrat
Materials 81% Viscose, 15% Linen,
4% Non-woven Polyester backing
Martindale 30.000
Lightfastness 5-7
Pilling 5



0102



0112



0132



0142



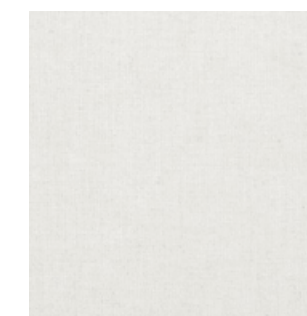
0162



0172



0192



0202



0212



0222



0232



0332



0342



0352



0362



0392



0542



0562



0662



0722

Maple

Textile

Price category 1
Manufacturer Kvadrat
Materials 81% Viscose, 15% Linen,
4% Non-woven Polyester backing
Martindale 30.000
Lightfastness 5-7
Pilling 5



0732



0742



0762



0792



0832



0862

Remix 3

Textile

Price category 1
Manufacturer Kvadrat
Materials 90% New wool, 10% Nylon
Martindale 100.000
Lightfastness 5-7
Pilling 4



Remix 3

Textile

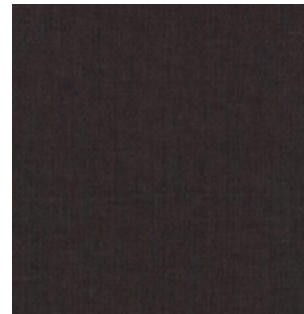
Price category 1
Manufacturer Kvadrat
Materials 90% New wool, 10% Nylon
Martindale 100.000
Lightfastness 5-7
Pilling 4



Remix 3

Textile

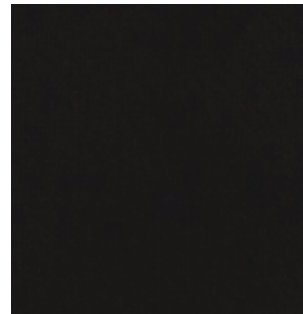
Price category 1
Manufacturer Kvadrat
Materials 90% New wool, 10% Nylon
Martindale 100.000
Lightfastness 5-7
Pilling 4



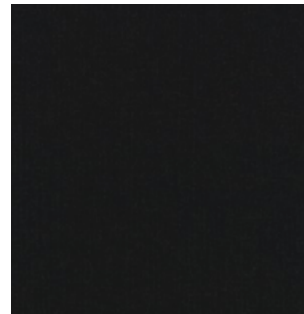
0356



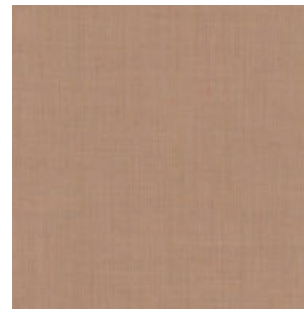
0362



0373



0383



0406



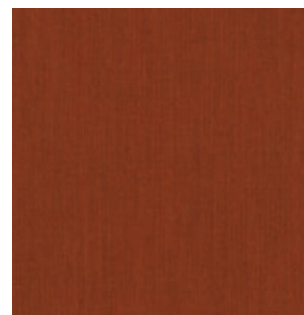
0412



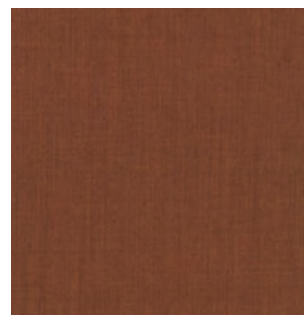
0422



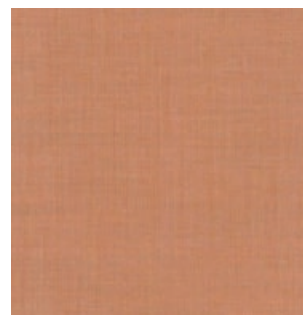
0433



0443



0452



0516



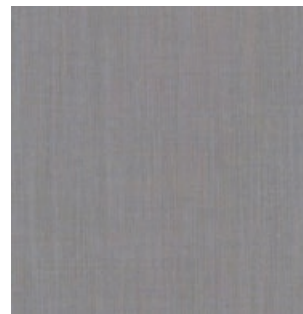
0536



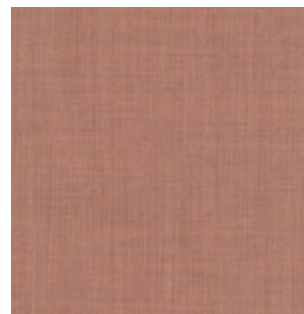
0543



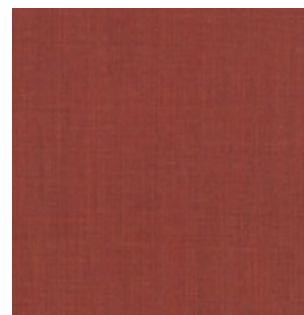
0566



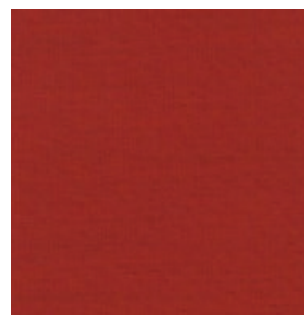
0606



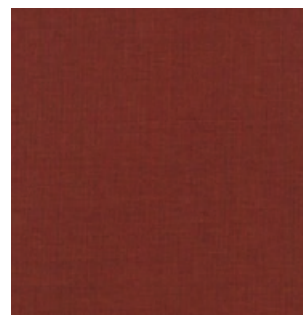
0612



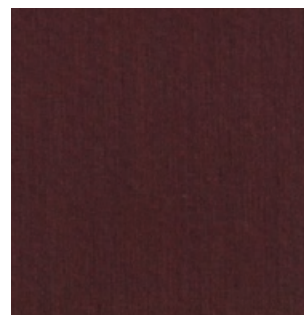
0632



0643



0653

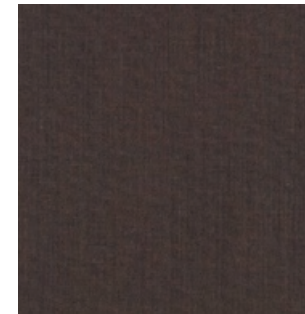


0662

Remix 3

Textile

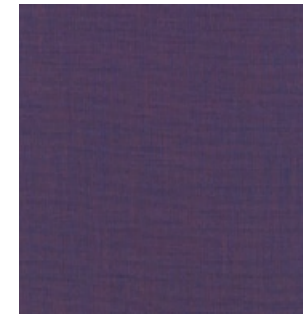
Price category 1
Manufacturer Kvadrat
Materials 90% New wool, 10% Nylon
Martindale 100.000
Lightfastness 5-7
Pilling 4



0672



0682



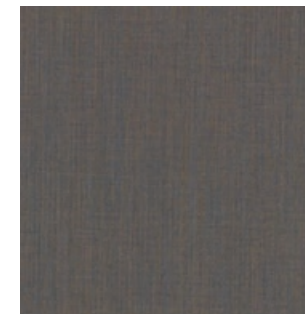
0686



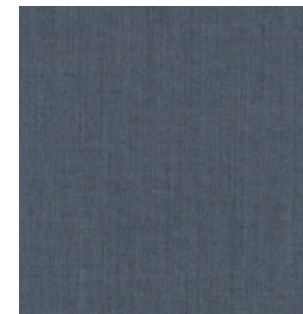
0692



0716



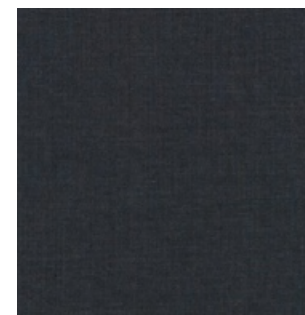
0722



0733



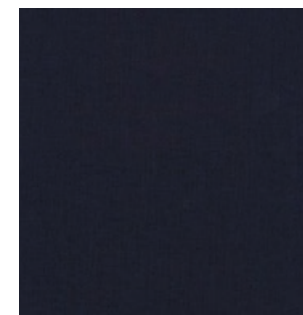
0743



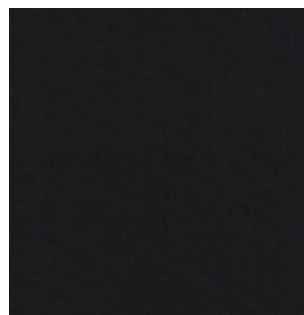
0753



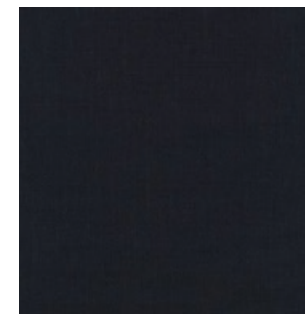
0762



0773



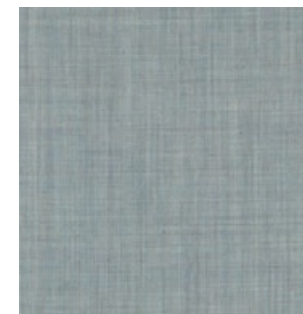
0783



0796



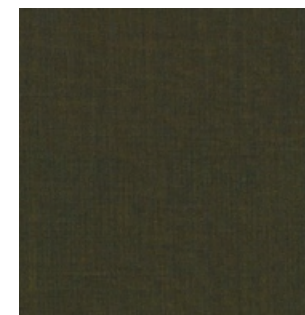
0816



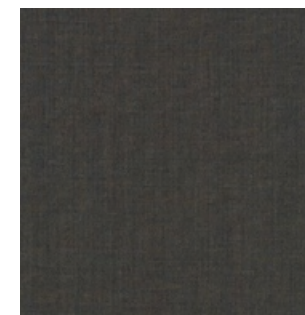
0823



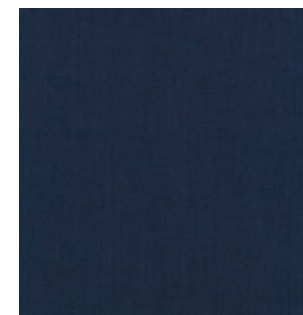
0836



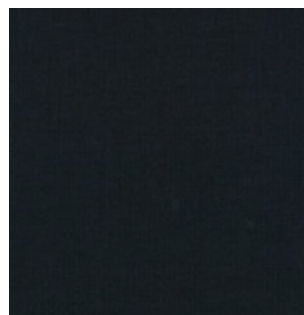
0842



0852



0866



0873

Remix 3

Textile

Price category 1
Manufacturer Kvadrat
Materials 90% New wool, 10% Nylon
Martindale 100.000
Lightfastness 5-7
Pilling 4



0906



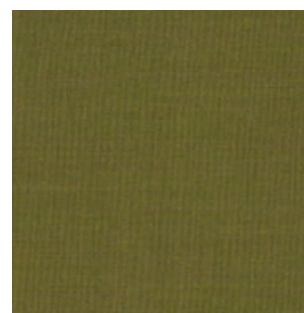
0912



0923



0933



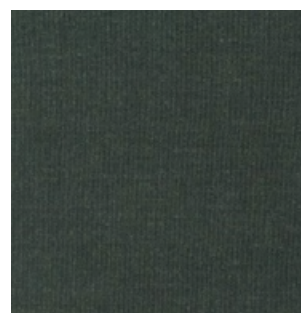
0942



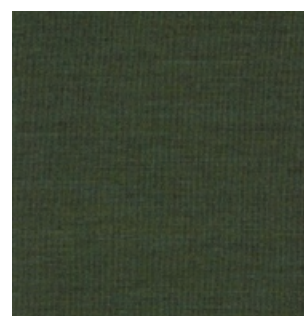
0954



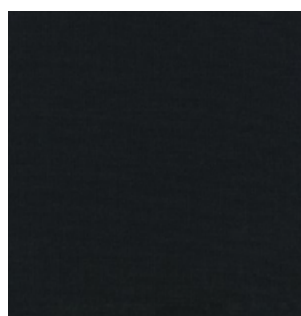
0962



0973



0982



0996

Re-Wool

Textile

Price category 1
Manufacturer Kvadrat
Materials 45% new wool worsted 45% recycled wool 10% nylon
Martindale 100.000
Lightfastness 5-7 (ISO 1-8)
Pilling 4 (ISO 1-5)



Re-Wool

Textile

Price category 1
Manufacturer Kvadrat
Materials 45% new wool worsted 45% recycled wool 10% nylon
Martindale 100.000
Lightfastness 5-7 (ISO 1-8)
Pilling 4 (ISO 1-5)



Re-Wool

Textile



0868

Price category 1
Manufacturer Kvadrat
Materials 45% new wool worsted 45% recycled
wool 10% nylon
Martindale 100.000
Lighfastness 5-7 (ISO 1-8)
Pilling 4 (ISO 1-5)

Illusion

Artificial leather

Price category 1
Manufacturer Nevotex
Materials Artificial leather
Thickness 1 mm



*Please note Instill is an artificial leather

Illusion

Artificial leather

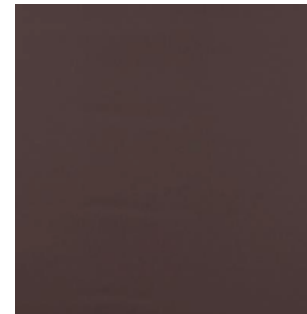
Price category 1
Manufacturer Nevotex
Materials Artificial leather
Thickness 1 mm



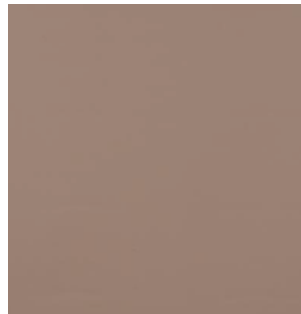
Illusion

Artificial leather

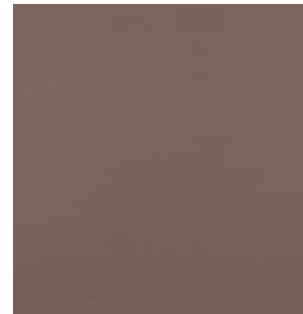
Price category 1
Manufacturer Nevotex
Materials Artificial leather
Thickness 1 mm



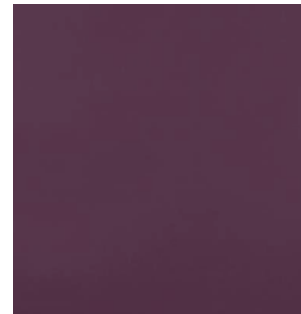
48013



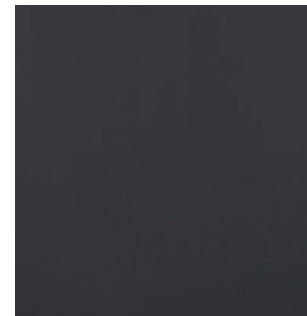
46508



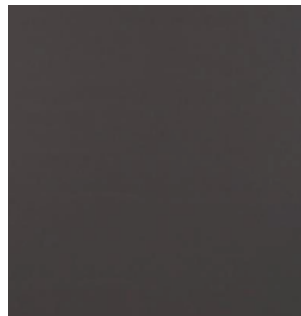
47124



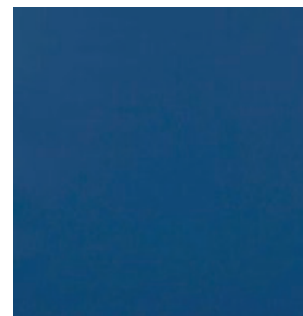
67403



68523



58290



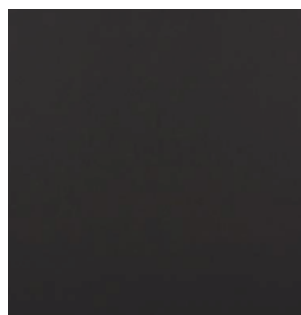
68746



65066



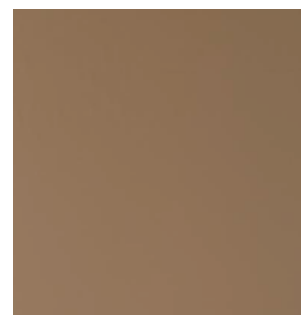
67382



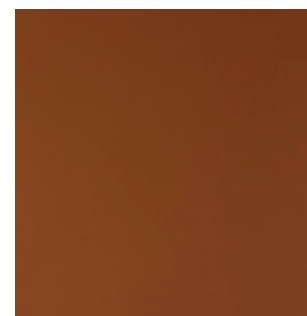
00110



83430



85020



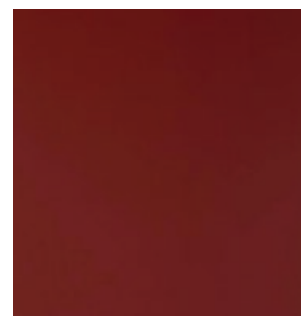
44388



36850



23660



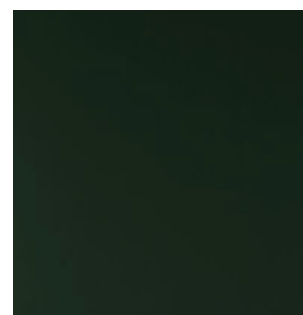
28040



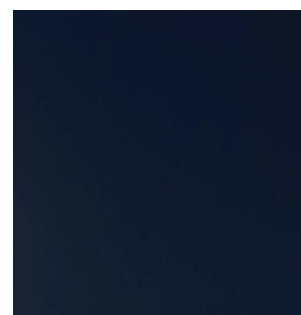
75566



76725



77773

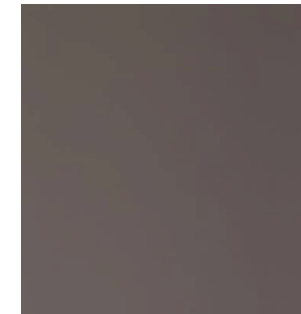


66745

Illusion

Artificial leather

Price category 1
Manufacturer Nevotex
Materials Artificial leather
Thickness 1 mm



47069

2

Textile Category 2

Canvas 2

Textile

Price category 2
Manufacturer Kvadrat
Materials 90% New wool, 10% Nylon
Martindale 100.000
Lightfastness 5-7
Pilling 4-5



Canvas 2

Textile

Price category 2
Manufacturer Kvadrat
Materials 90% New wool, 10% Nylon
Martindale 100.000
Lightfastness 5-7
Pilling 4-5



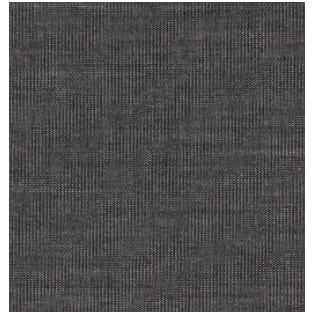
114



124



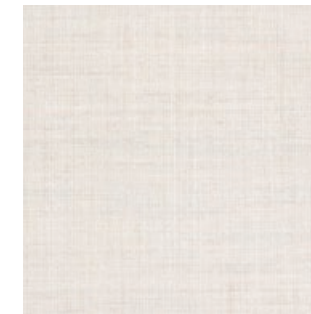
134



154



174



216



224



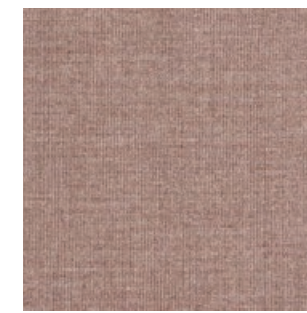
244



254



264



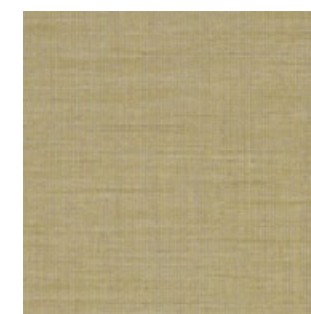
356



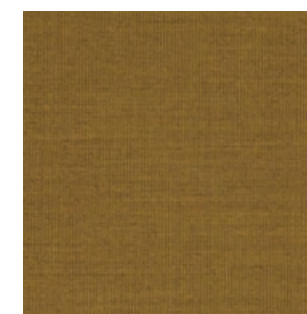
364



374



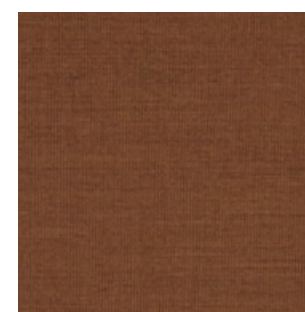
414



424



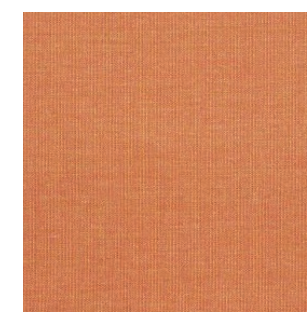
446



545



546



556



566

Canvas 2

Textile

Price category 2
Manufacturer Kvadrat
Materials 90% New wool, 10% Nylon
Martindale 100.000
Lightfastness 5-7
Pilling 4-5



576



614



644



654



666



674



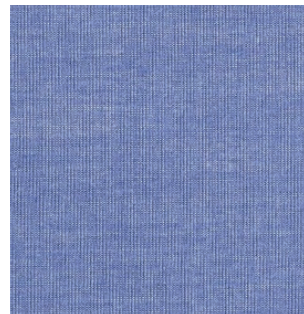
684



694



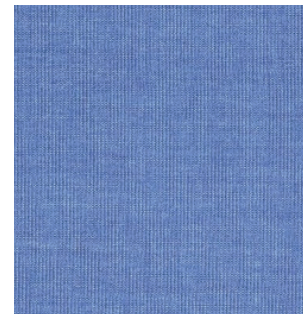
716



726



734



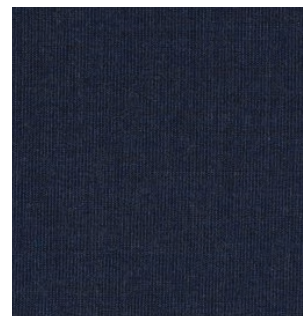
746



764



786



794



836



854



926



936



946

Canvas 2

Textile

Price category 2
Manufacturer Kvadrat
Materials 90% New wool, 10% Nylon
Martindale 100.000
Lightfastness 5-7
Pilling 4-5



954



964



974



984



996

Clay

Textile

Price category 2
Manufacturer Sahco
Materials 76% Linen, 21% Cotton,
3% Polyester
Martindale 45.000
Lightfastness 4-6
Pilling 4



Clay

Textile

Price category 2
Manufacturer Sahco
Materials 76% Linen, 21% Cotton,
3% Polyester
Martindale 45.000
Lightfastness 4-6
Pilling 4



Colline 2

Textile

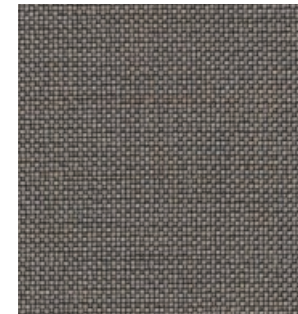
Price category 2
Manufacturer Kvadrat
Materials 75% wool, 17% Acrylic,
8% Nylon
Martindale 100.000
Lightfastness 6
Pilling 4-5



Colline 2

Textile

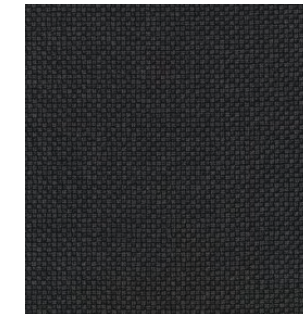
Price category 2
Manufacturer Kvadrat
Materials 75% wool, 17% Acrylic,
8% Nylon
Martindale 100.000
Lightfastness 6
Pilling 4-5



0127



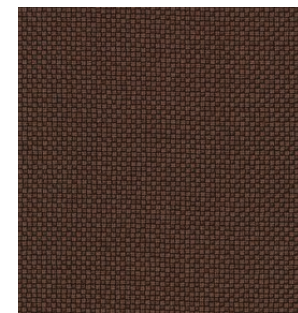
0147



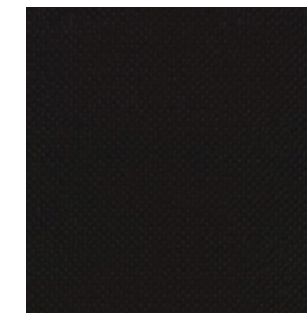
0177



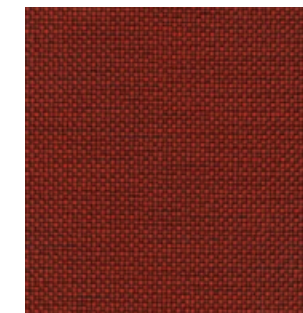
0227



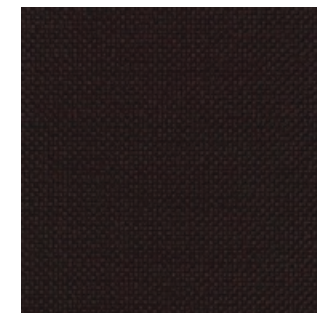
0347



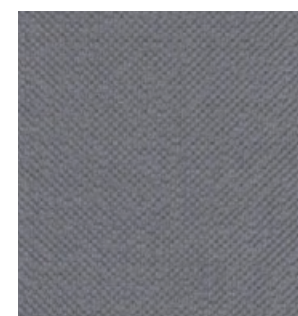
0397



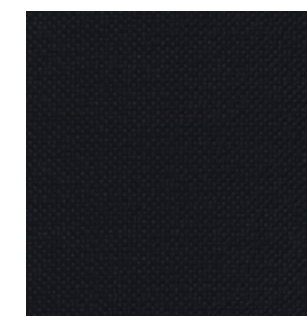
0657



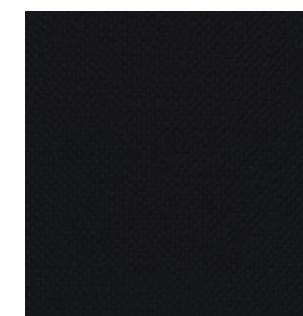
0677



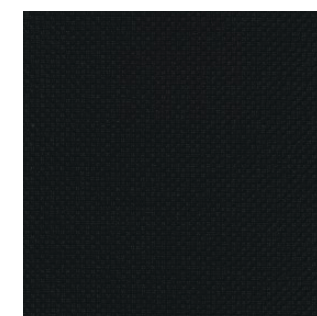
0737



0787



0797

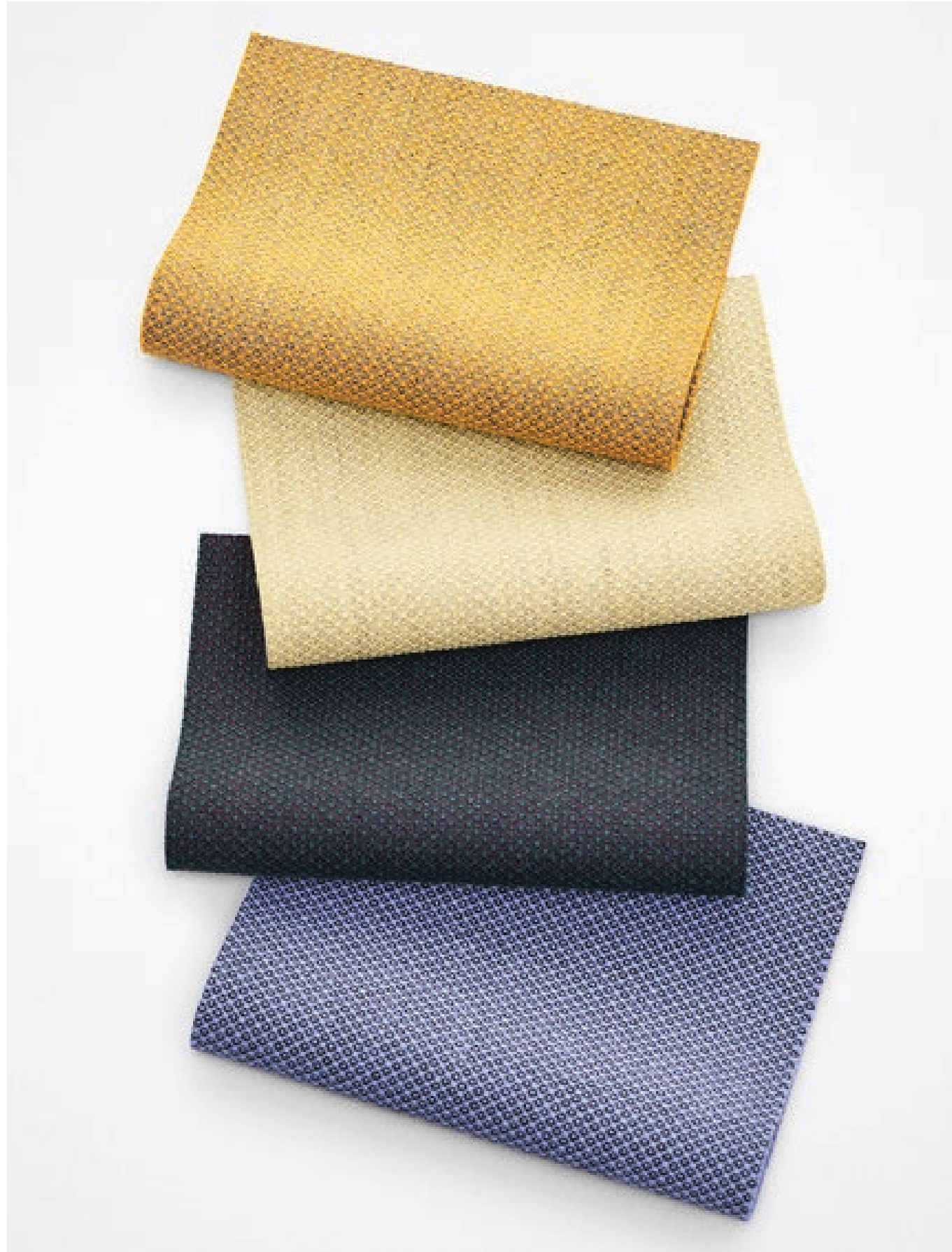


0987

Fiord 2

Textile

Price category 2
Manufacturer Kvadrat
Materials 92% New wool, 8% Nylon
Martindale 60.000
Lightfastness 6
Pilling 4-5



Fiord 2

Textile

Price category 2
Manufacturer Kvadrat
Materials 92% New wool, 8% Nylon
Martindale 60.000
Lightfastness 6
Pilling 4-5



Fiord 2

Textile

Price category 2
Manufacturer Kvadrat
Materials 92% New wool, 8% Nylon
Martindale 60.000
Lightfastness 6
Pilling 4-5



571



581



591



642



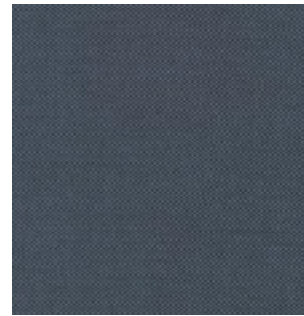
672



721



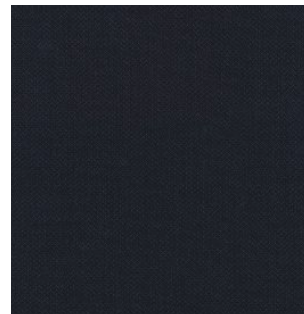
751



762



771



782



791



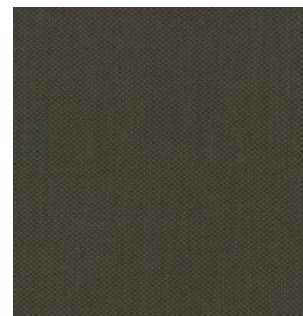
821



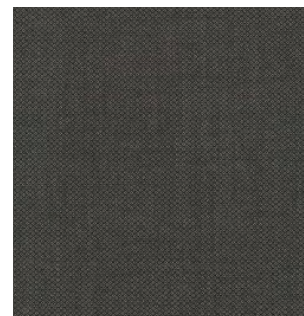
862



951



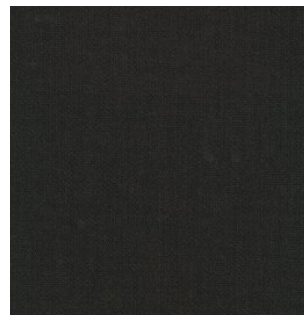
961



971



981



991

Hallingdal 65

Textile

Price category 2
Manufacturer Kvadrat
Materials 70% New wool, 30% Viscose
Martindale 100.000
Lightfastness 5-7
Pilling 3-4



Hallingdal 65

Textile

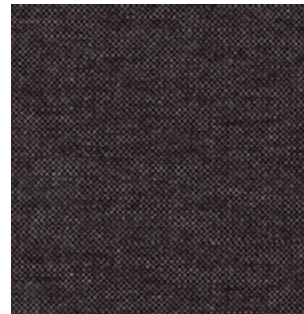
Price category 2
Manufacturer Kvadrat
Materials 70% New wool, 30% Viscose
Martindale 100.000
Lightfastness 5-7
Pilling 3-4



Hallingdal 65

Textile

Price category 2
Manufacturer Kvadrat
Materials 70% New wool, 30% Viscose
Martindale 100.000
Lightfastness 5-7
Pilling 3-4



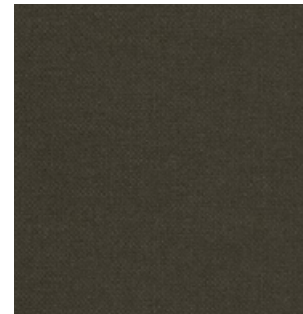
0368



0370



0376



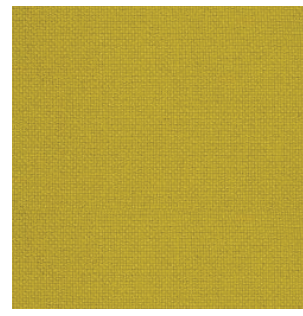
0390



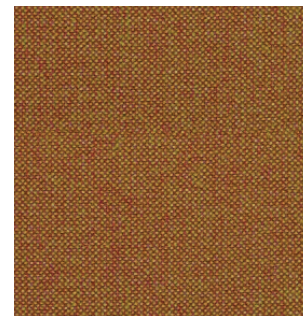
0407



0420



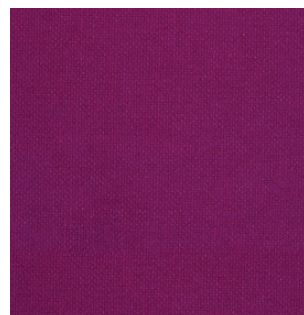
0457



0526



0547



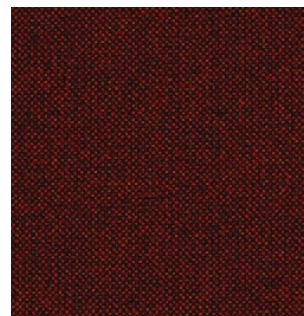
0563



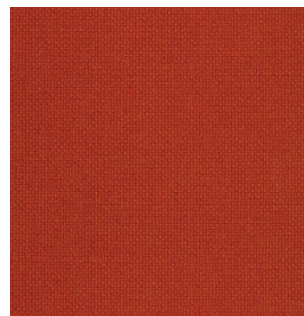
0573



0590



0596



0600



0657



0660



0674



0680



0687



0694

Hallingdal 65

Textile

Price category 2
Manufacturer Kvadrat
Materials 70% New wool, 30% Viscose
Martindale 100.000
Lightfastness 5-7
Pilling 3-4



0702



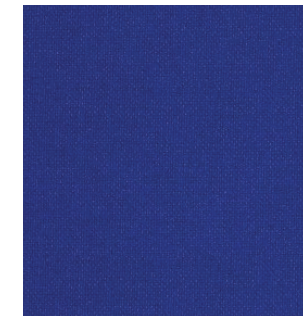
0723



0733



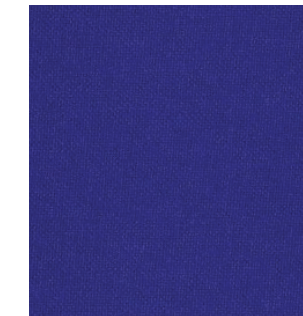
0750



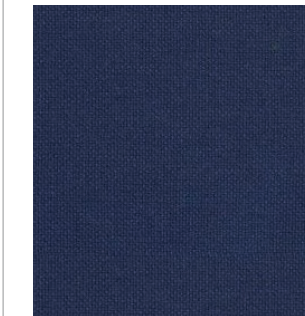
0753



0754



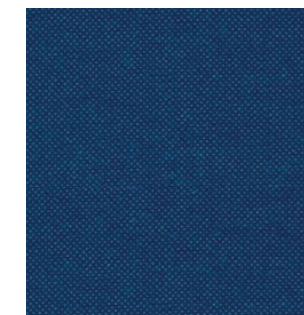
0763



0764



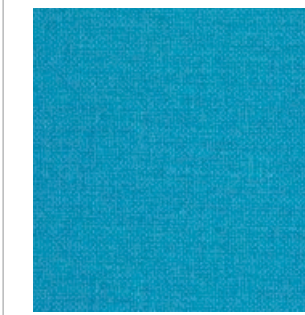
0773



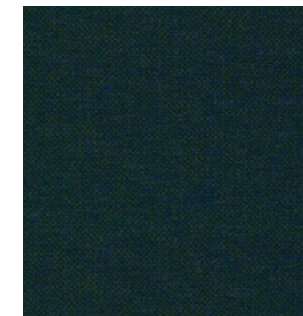
0810



0840



0850



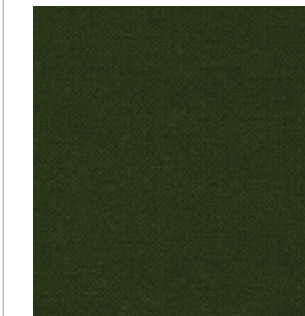
0890



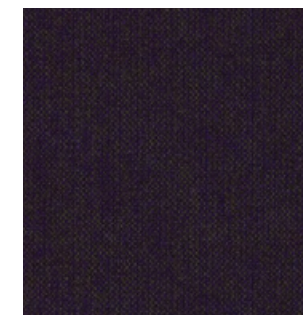
0907



0944



0960



0968

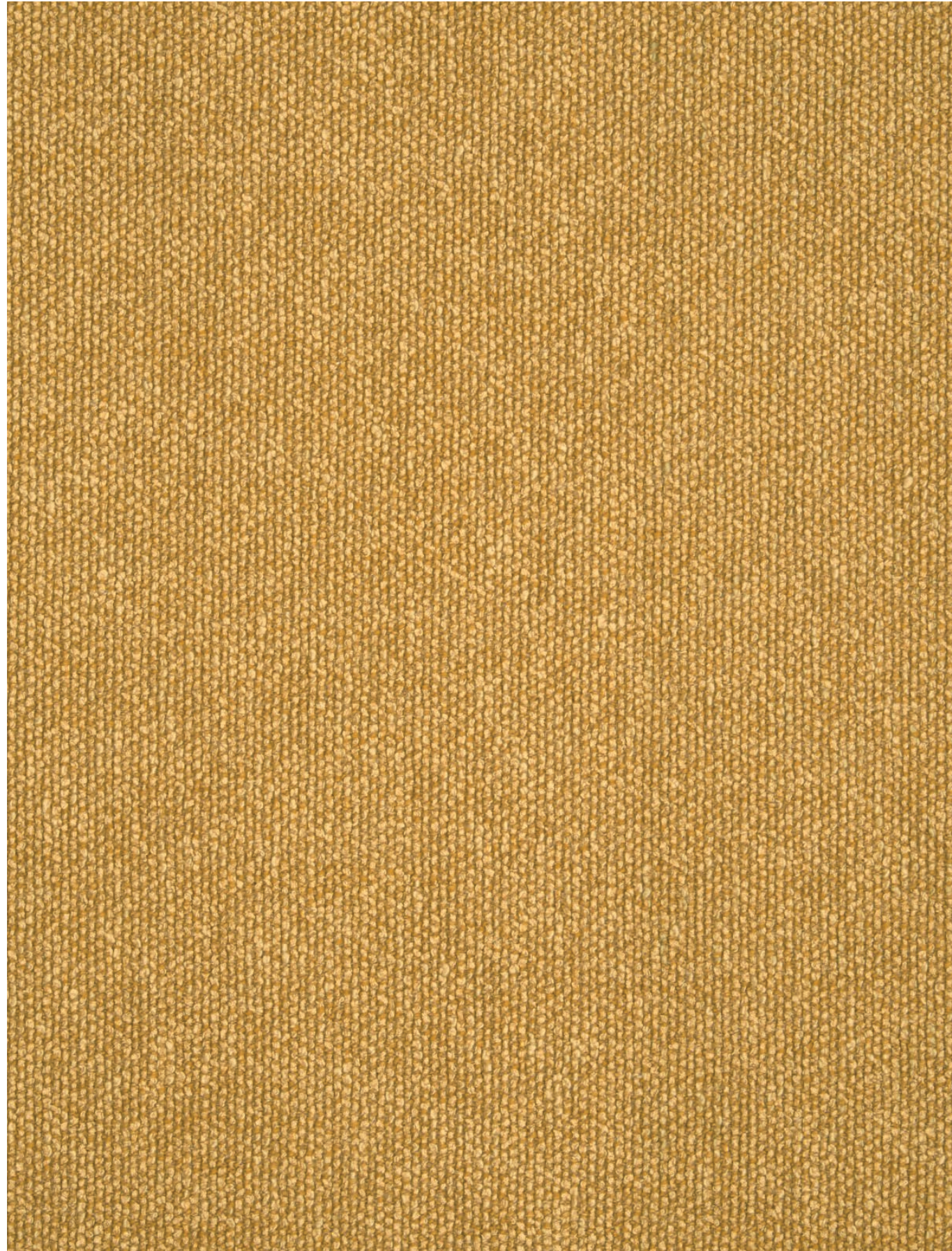


0980

Moss

Textile

Price category 2
Manufacturer Sahco
Materials 52% Cotton, 22% Viscose,
14% Acrylic, 6% Linen, 3% Polyester,
3% Nylon
Martindale 45.000
Lightfastness 6-7
Pilling 4-5



Moss

Textile

Price category 2
Manufacturer Sahco
Materials 52% Cotton, 22% Viscose,
14% Acrylic, 6% Linen, 3% Polyester,
3% Nylon
Martindale 45.000
Lightfastness 6-7
Pilling 4-5



Moss

Textile



0021



0022

Price category 2
Manufacturer Sahco
Materials 52% Cotton, 22% Viscose,
14% Acrylic, 6% Linen, 3% Polyester,
3% Nylon
Martindale 45.000
Lightfastness 6-7
Pilling 4-5

Reflect

Textile

Price category 2
Manufacturer Kvadrat
Materials 100% post-consumer recycled polyester
Martindale 100.000
Lightfastness 6 (ISO 1-8)
Pilling 4 (ISO 1-5)



Reflect

Textile

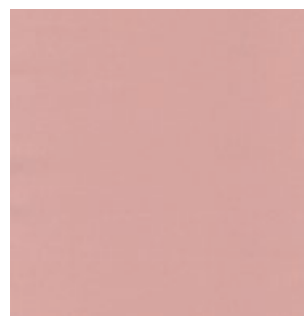
Price category 2
Manufacturer Kvadrat
Materials 100% post-consumer recycled polyester
Martindale 100.000
Lightfastness 6 (ISO 1-8)
Pilling 4 (ISO 1-5)



Reflect

Textile

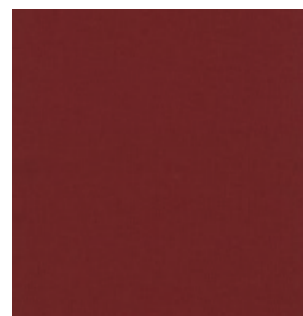
Price category 2
Manufacturer Kvadrat
Materials 100% post-consumer recycled polyester
Martindale 100.000
Lightfastness 6 (ISO 1-8)
Pilling 4 (ISO 1-5)



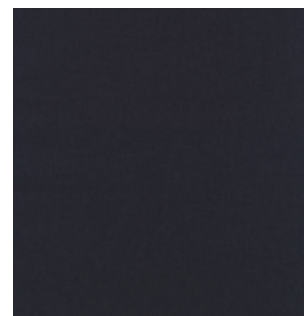
0614



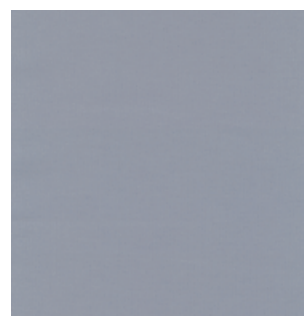
0644



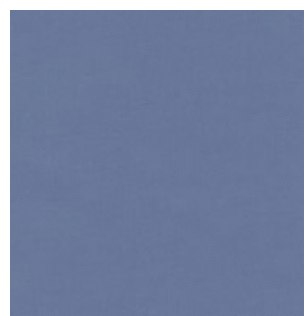
0674



0694



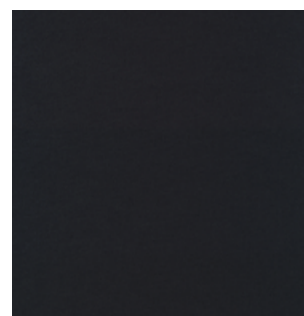
0714



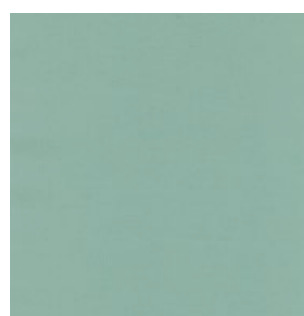
0744



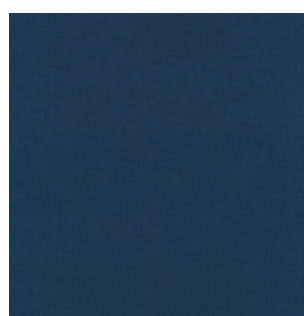
0774



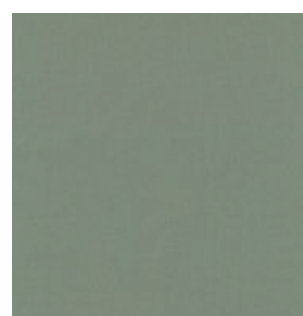
0794



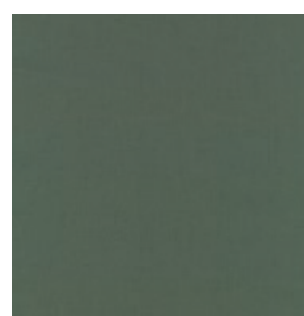
0824



0884



0924



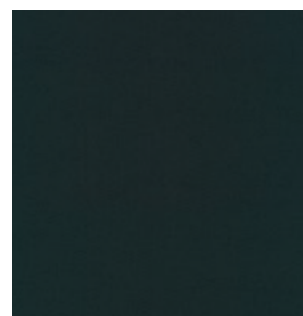
0944



0964



0984



0994

Savanna

Textile

Price category 2
Manufacturer Kvadrat
Materials 34% Polyester, 31% wool,
26% Acrylic, 4% Cotton, 3% Nylon,
2% Linen
Martindale 45.000
Lightfastness 6-7
Pilling 3



Savanna

Textile

Price category 2
Manufacturer Kvadrat
Materials 34% Polyester, 31% wool,
26% Acrylic, 4% Cotton, 3% Nylon,
2% Linen
Martindale 45.000
Lightfastness 6-7
Pilling 3



242



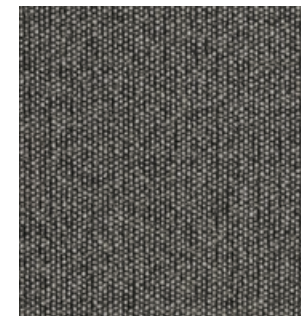
262



622



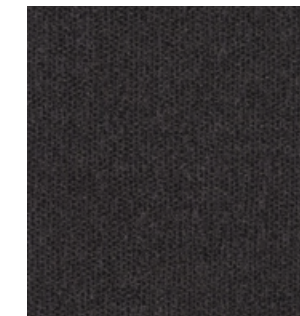
122



152



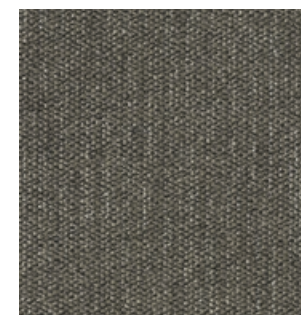
222



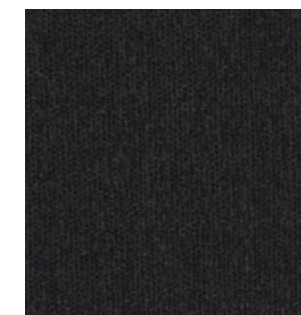
292



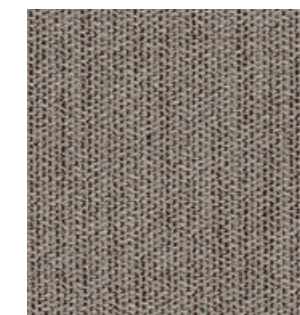
202



952



192



622

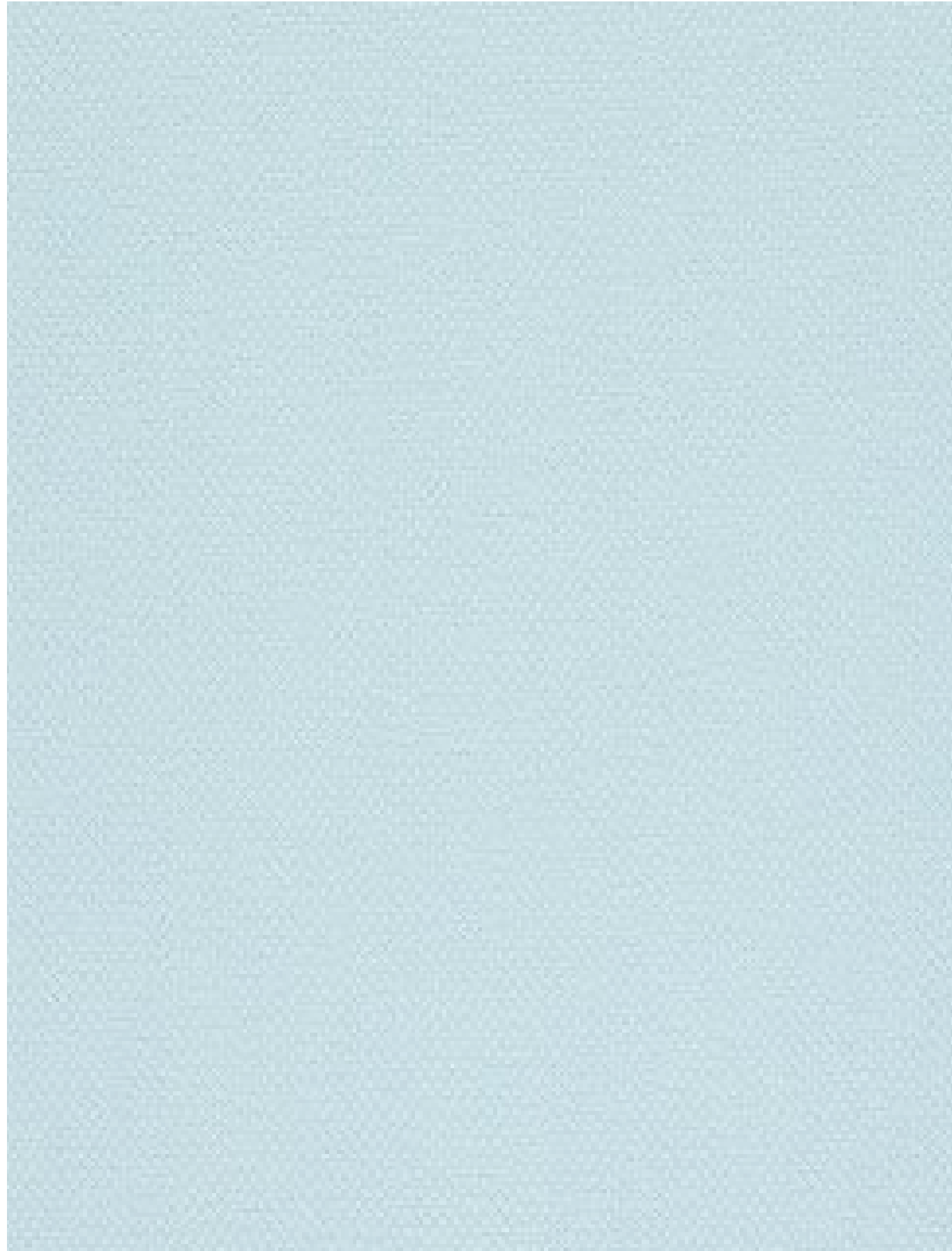


442

Steelcut 2

Textile

Price category 2
Manufacturer Kvadrat
Materials 90% New wool, 10% Nylon
Martindale 100.000
Lightfastness 5-7
Pilling 3-4



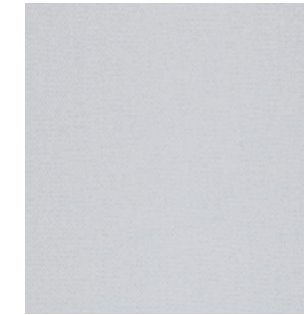
Steelcut 2

Textile

Price category 2
Manufacturer Kvadrat
Materials 90% New wool, 10% Nylon
Martindale 100.000
Lightfastness 5-7
Pilling 3-4



110



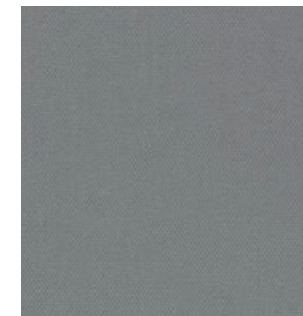
120



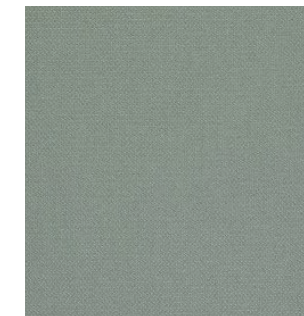
135



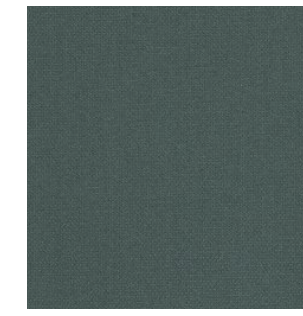
140



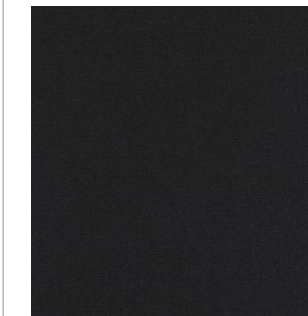
155



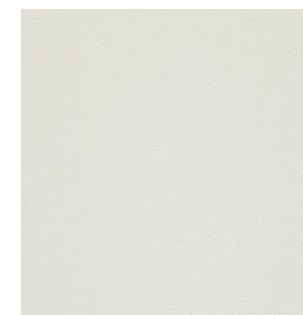
160



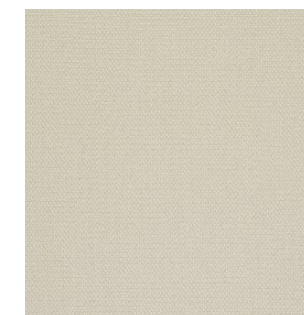
180



190



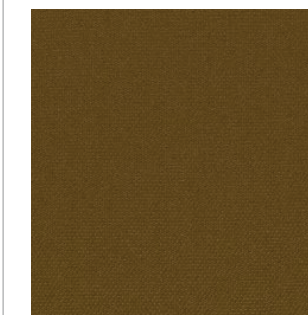
220



240



255



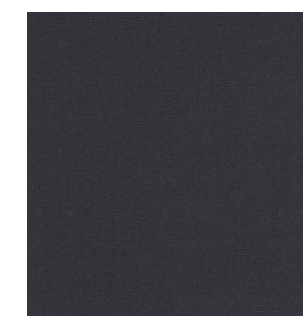
265



365



370



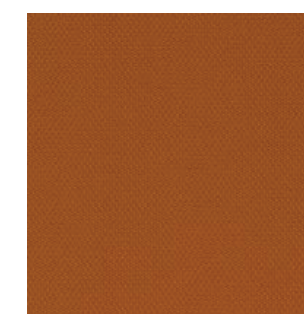
380



435



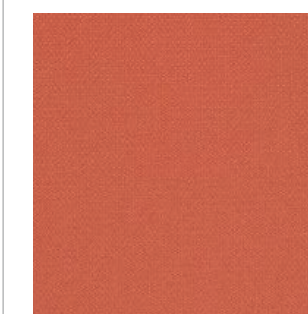
445



535



545



550

Steelcut 2

Textile

Price category 2
Manufacturer Kvadrat
Materials 90% New wool, 10% Nylon
Martindale 100.000
Lightfastness 5-7
Pilling 3-4



605



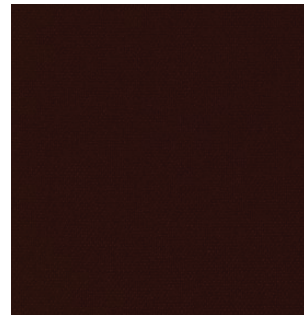
615



625



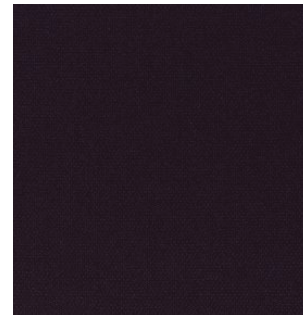
635



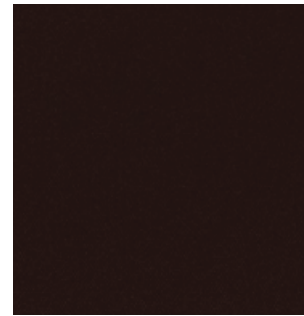
655



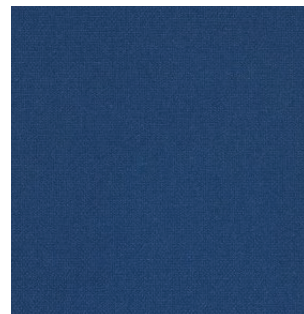
660



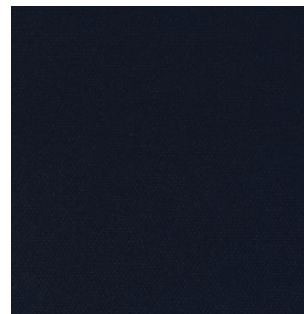
685



695



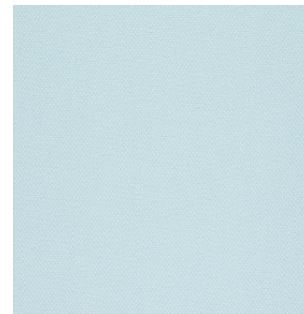
760



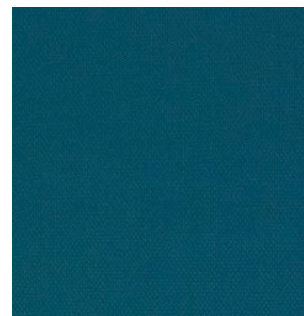
775



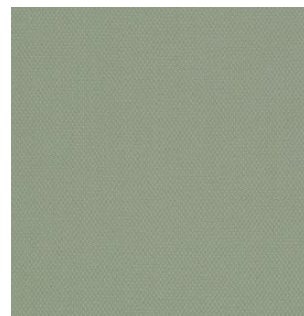
780



820



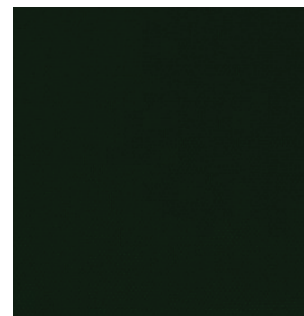
835



935



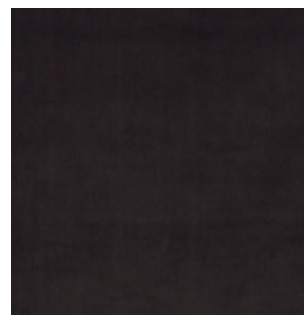
950



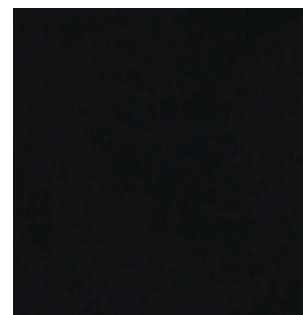
975



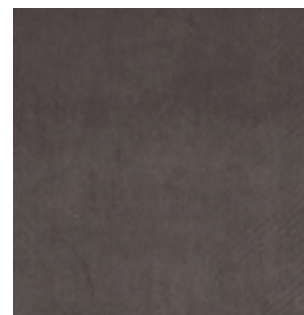
985



1122



0917

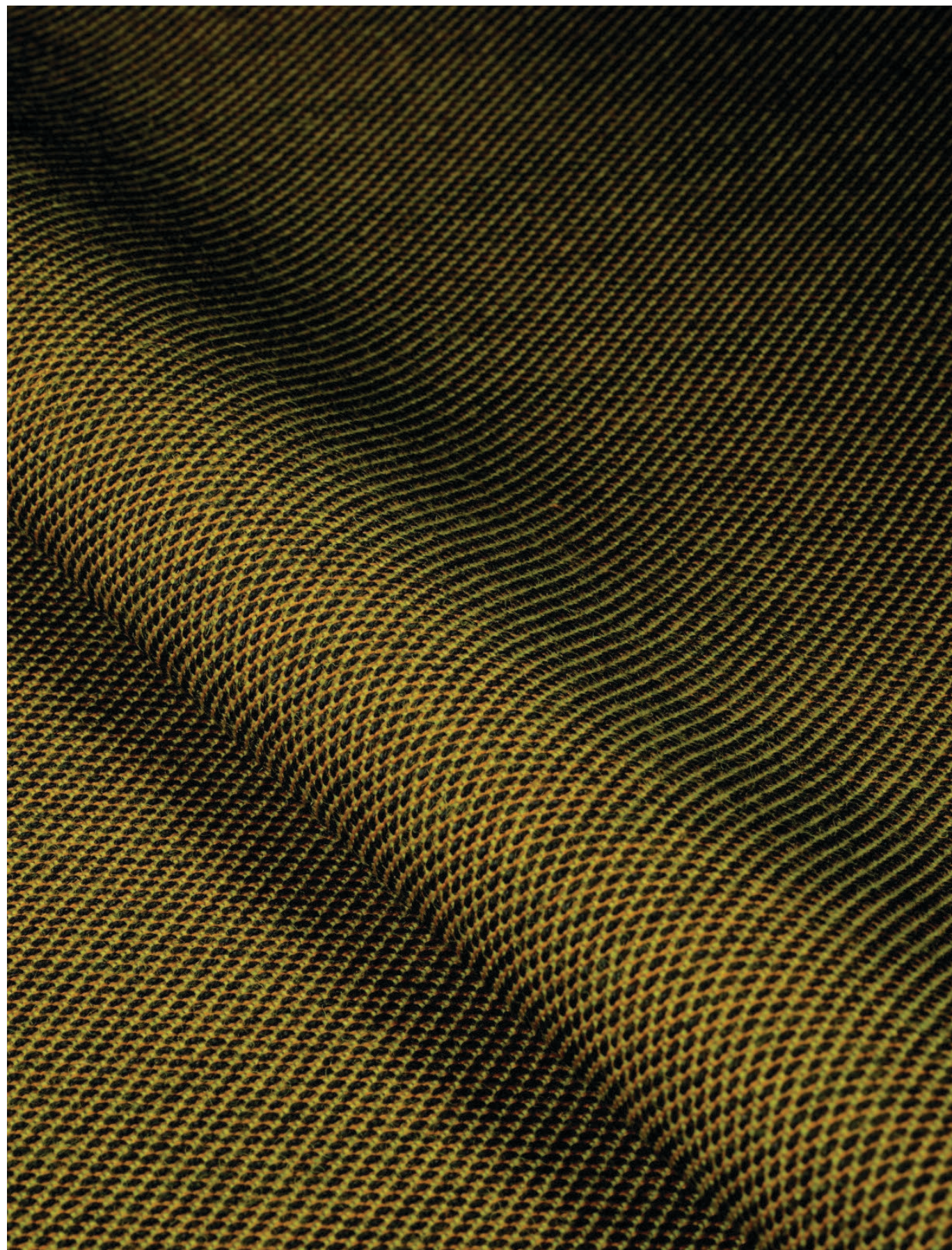


1362

Steelcut Trio 3

Textile

Price category 2
Manufacturer Kvadrat
Materials 90% New wool, 10% Nylon
Martindale 100.000
Lightfastness 5-7
Pilling 4



Steelcut Trio 3

Textile

Price category 2
Manufacturer Kvadrat
Materials 90% New wool, 10% Nylon
Martindale 100.000
Lightfastness 5-7
Pilling 4



Steelcut Trio 3

Textile

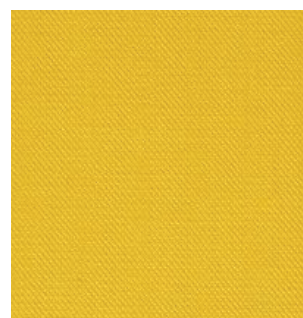
Price category 2
Manufacturer Kvadrat
Materials 90% New wool, 10% Nylon
Martindale 100.000
Lightfastness 5-7
Pilling 4



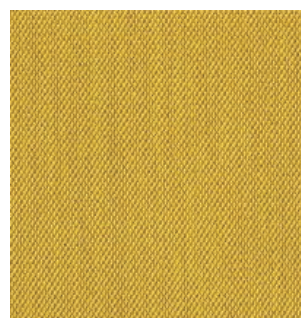
426



436



446



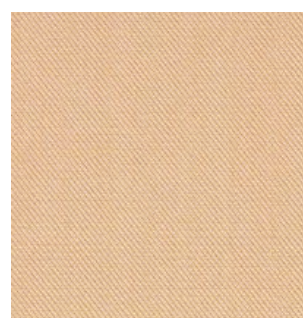
453



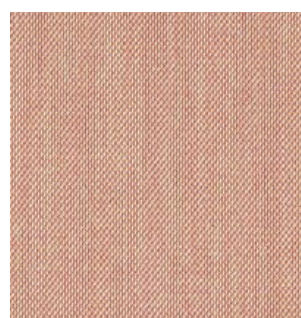
466



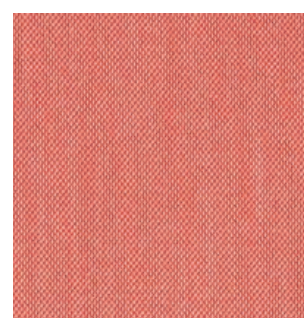
476



506



515



526



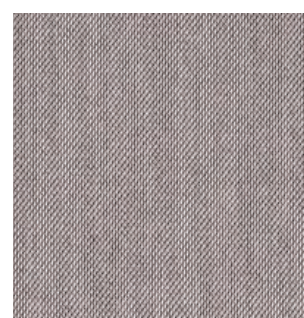
533



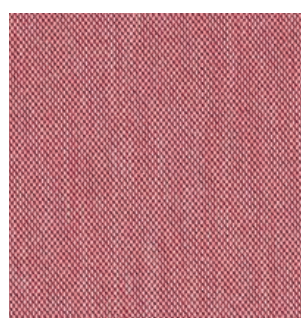
553



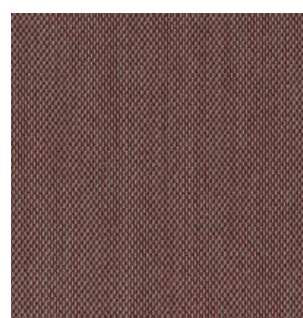
576



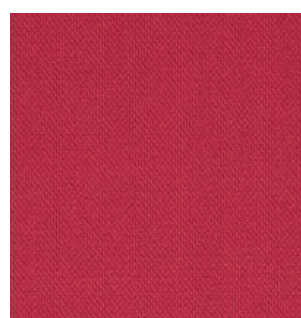
616



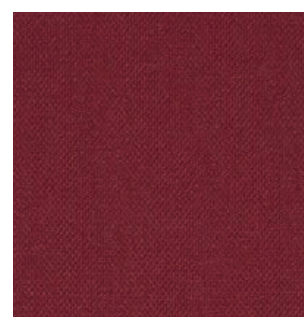
636



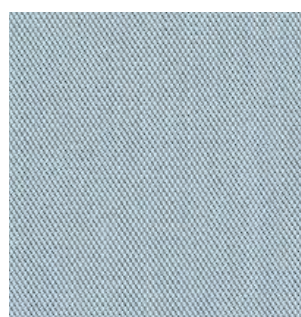
645



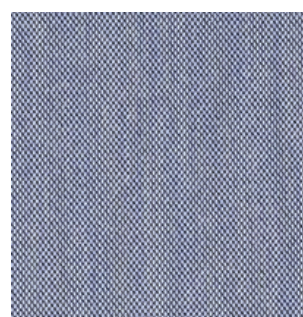
666



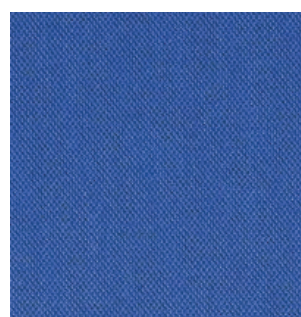
686



713



716

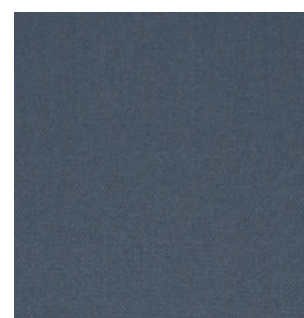


746

Steelcut Trio 3

Textile

Price category 2
Manufacturer Kvadrat
Materials 90% New wool, 10% Nylon
Martindale 100.000
Lightfastness 5-7
Pilling 4



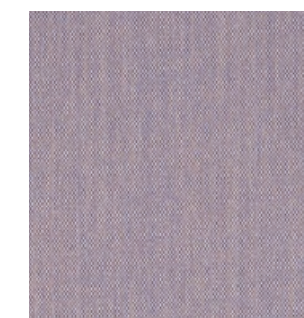
756



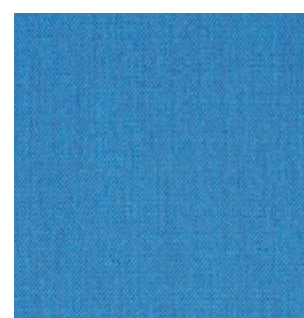
776



796



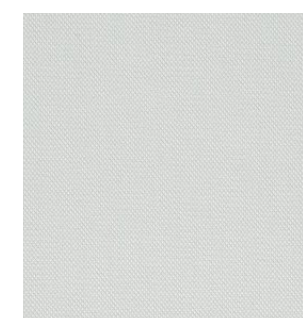
806



865



883



906



916



946



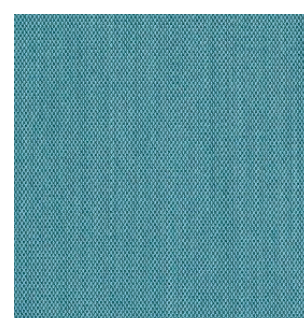
953



966



976



983



996

3

Textile Category 3

Arctic

Textile

Price category 3
Manufacturer JAB
Materials 51% Polyacrylic,
31% Viscose, 18% Polyester
Martindale 30.000



Arctic

Textile

Price category 3
Manufacturer JAB
Materials 51% Polyacrylic,
31% Viscose, 18% Polyester
Martindale 30.000



1-1365-040



1-1365-070

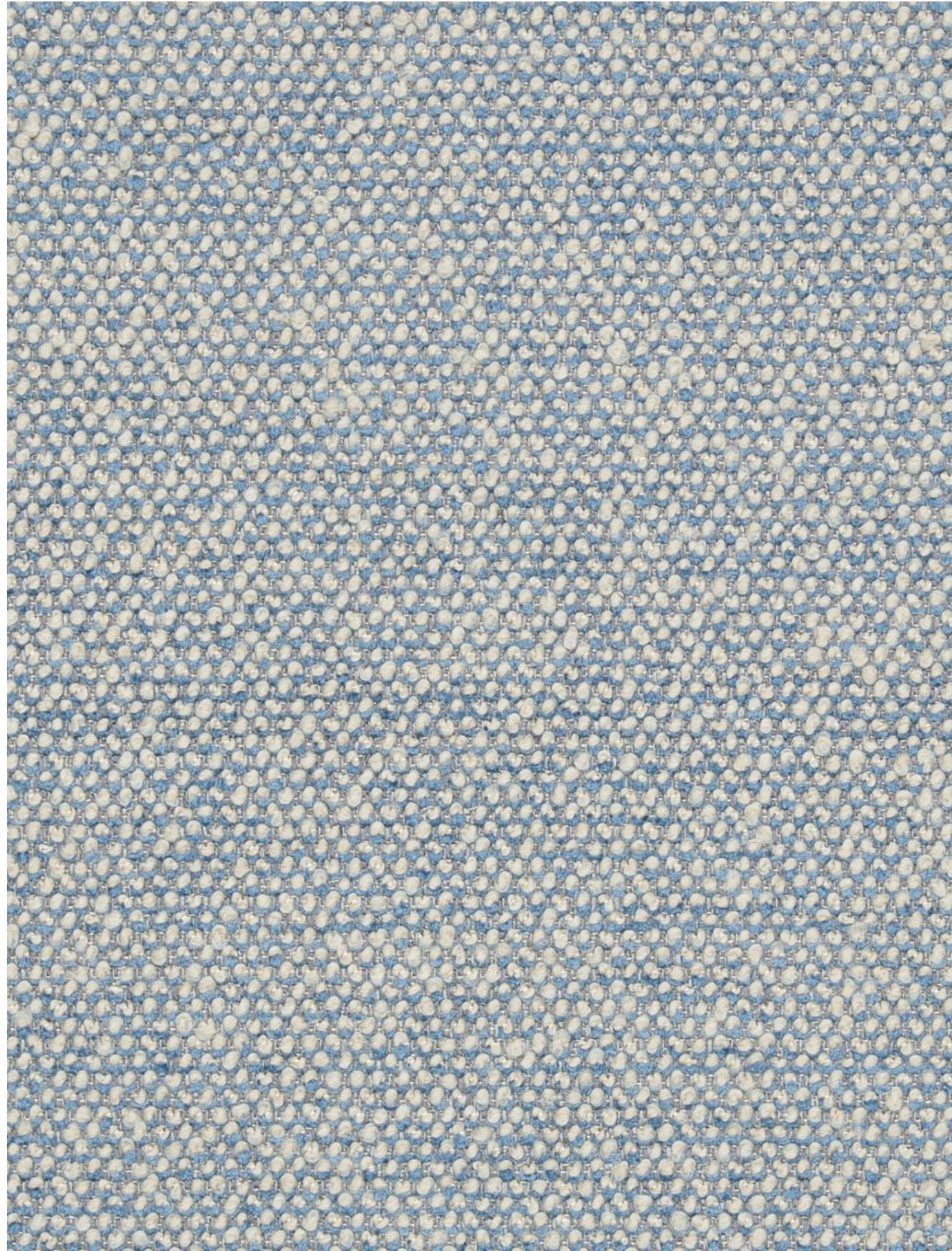


1-1365-091

Safire

Textile

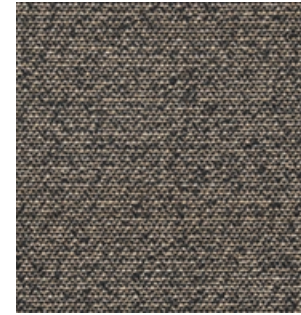
Price category 3
Manufacturer Sahco
Materials 43% Viscose, 17% Polyacrylic,
15% New wool, 9% Cotton, 8% Linen,
8% Polyester
Martindale 40.000
Lightfastness 6
Pilling 3



Safire

Textile

Price category 3
Manufacturer Sahco
Materials 43% Viscose, 17% Polyacrylic,
15% New wool, 9% Cotton, 8% Linen, 8%
Polyester
Martindale 40.000
Lightfastness 6
Pilling 3



001



002



003



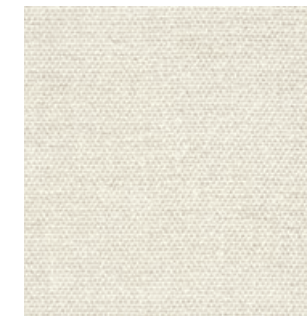
004



005



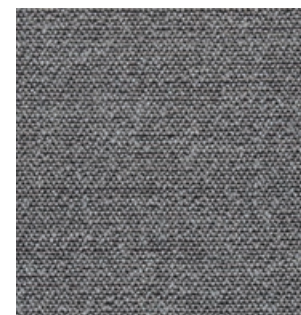
006



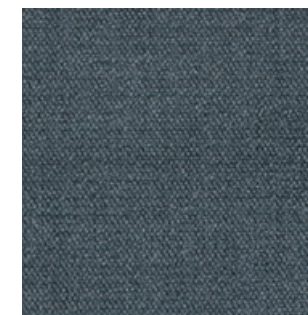
007



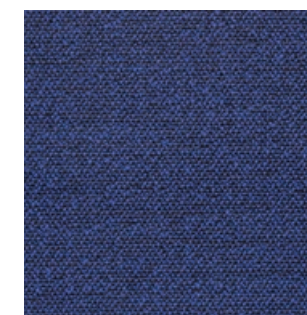
008



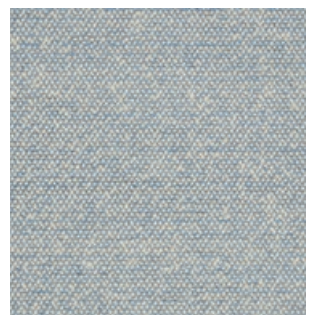
009



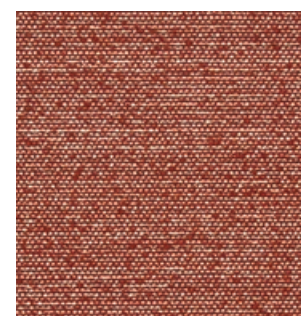
010



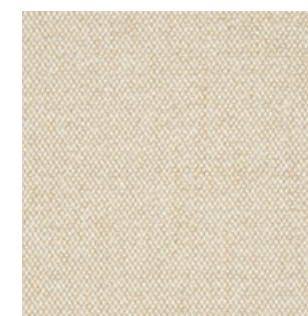
011



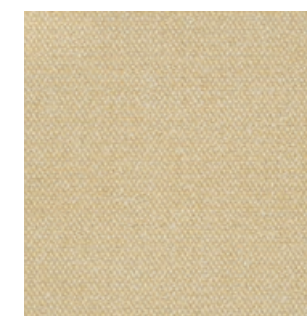
012



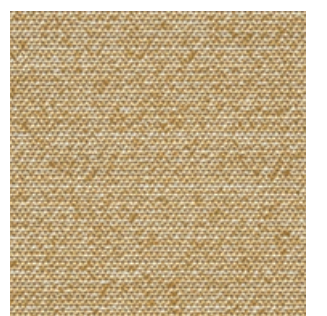
013



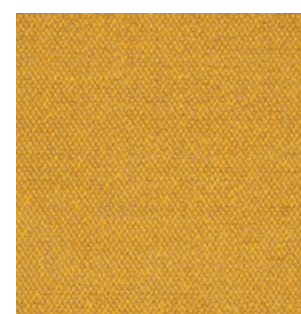
014



015



016



017

Vidar 4

Textile

Price category 3
Manufacturer Kvadrat
Materials 94% new wool, 6% nylon
Martindale 100,000
Lightfastness 7 (ISO 1-8)
Pilling 4 (ISO 1-5)



Vidar 4

Textile

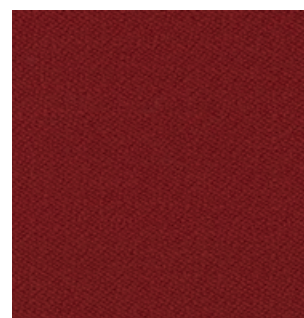
Price category 3
Manufacturer Kvadrat
Materials 94% new wool, 6% nylon
Martindale 100,000
Lightfastness 7 (ISO 1-8)
Pilling 4 (ISO 1-5)



Vidar 4

Textile

Price category 3
Manufacturer Kvadrat
Materials 94% new wool, 6% nylon
Martindale 100,000
Lightfastness 7 (ISO 1-8)
Pilling 4 (ISO 1-5)



0582



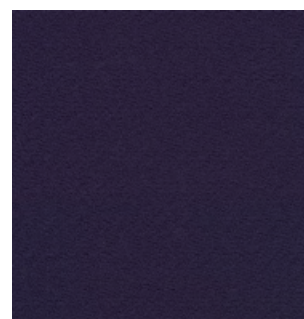
0622



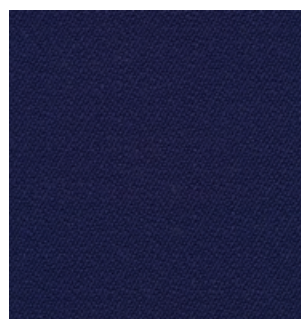
0633



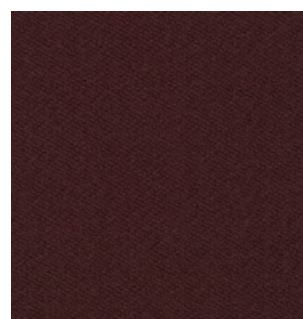
0653



0656



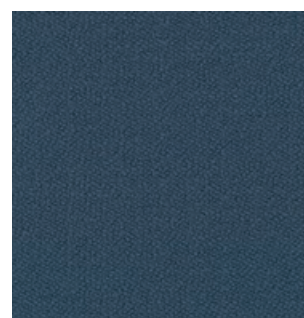
0676



0693



0723



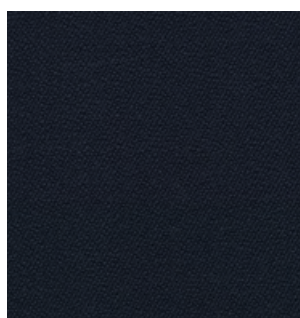
0733



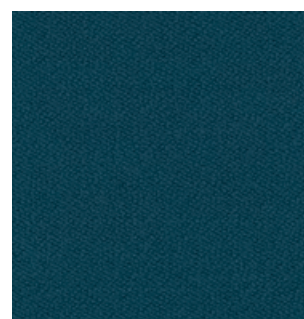
0745



0772



0786



0872



0913



0932



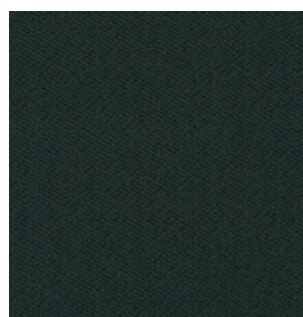
0943



0956



0972



1062

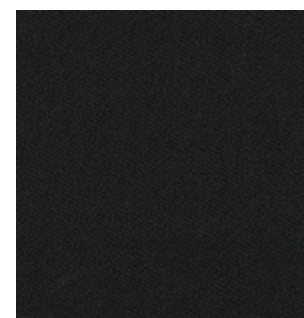


1511

Vidar 4

Textile

Price category 3
Manufacturer Kvadrat
Materials 94% new wool, 6% nylon
Martindale 100,000
Lightfastness 7 (ISO 1-8)
Pilling 4 (ISO 1-5)



1880

Zero

Textile

Price category 3
Manufacturer Kvadrat
Materials 65% cotton, 20% polyacrylic,
15% polyester
Martindale 70,000
Lightfastness 5-6 (ISO 1-8)
Pilling 5 (ISO 1-5)



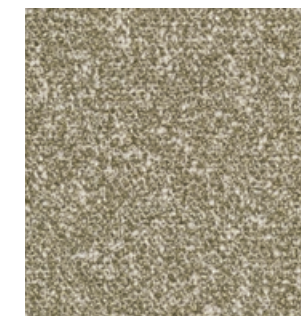
Zero

Textile

Price category 3
Manufacturer Kvadrat
Materials 65% cotton, 20% polyacrylic,
15% polyester
Martindale 70,000
Lightfastness 5-6 (ISO 1-8)
Pilling 5 (ISO 1-5)



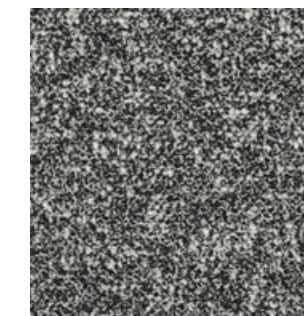
0001



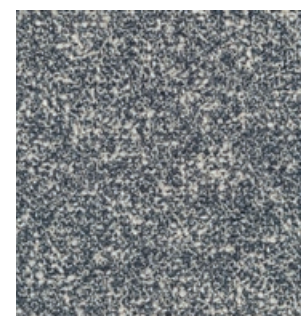
0002



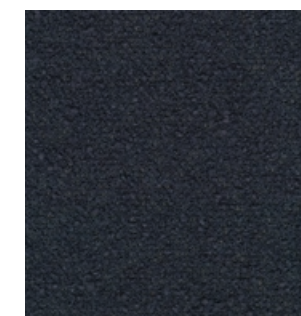
0003



0004



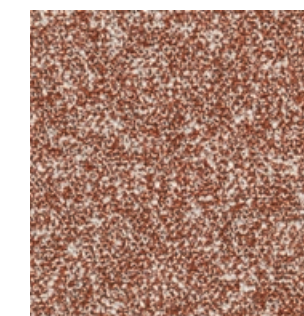
0005



0006



0007



0008



0009



0010



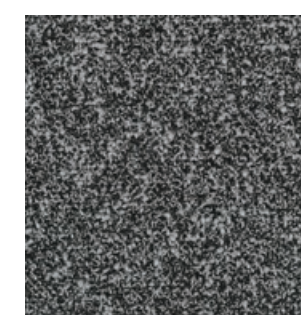
0011



0012



0013



0014



0015



0016

4

Textile Category 4

Doppiopanama

Textile

Price category 4
Manufacturer Dedar
Materials 60% Cotton, 35% Polyester
5% Polyamide
Martindale 35.000



Doppiopanama

Textile

Price category 4
Manufacturer Dedar
Materials 60% Cotton, 35% Polyester
5% Polyamide
Martindale 35.000



T14012_001



T14012_002



T14012_003



T14012_004



T14012_005

Grand Mohair

Textile

Price category 4
Manufacturer Danish Art Weaving
Materials 100% Mohair
Martindale Being tested
(>200.000 Wyzenbeek)
Lightfastness 4,5 (ISO 1-8)
Pilling Being tested
Certificates Oeko-Tex



Grand Mohair

Textile

Price category 4
Manufacturer Danish Art Weaving
Materials 100% Mohair
Martindale Being tested
(>200.000 Wyzenbeek)
Lightfastness 4,5 (ISO 1-8)
Pilling Being tested
Certificates Oeko-Tex



1103



2600

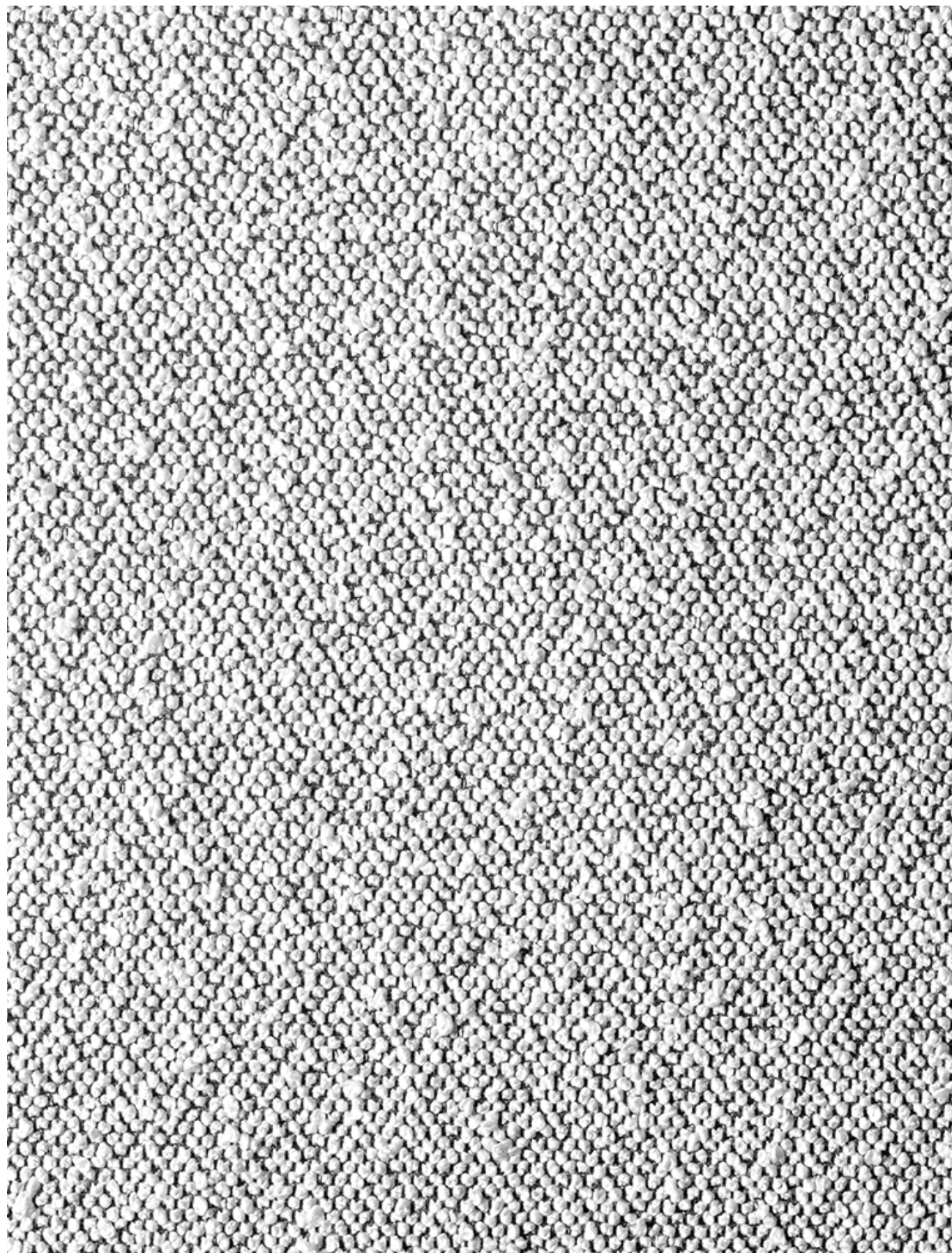


8205

Lupo

Textile

Price category 4
Manufacturer Dedar
Materials 72% Wool, 27% Cotton
1% Polyamide
Martindale 40.000



Lupo

Textile

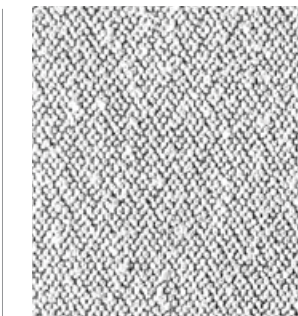
Price category 4
Manufacturer Dedar
Materials 72% Wool, 27% Cotton
1% Polyamide
Martindale 40.000



T19028_001



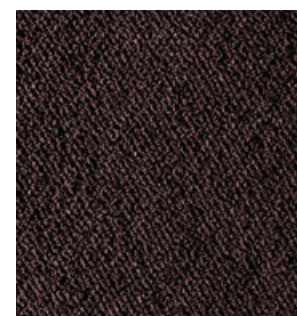
T19028_002



T19028_003



T19028_004



T19028_005



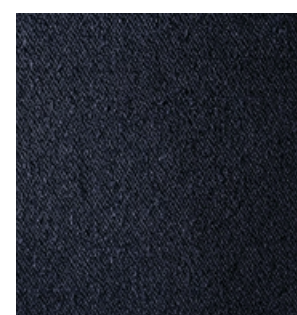
T19028_006



T19028_007



T19028_008



T19028_009

Upholstery Selection & Furniture

The MENU upholstery programme shows an overview of our textile and leather standard programme. All textile and leather collections are available in all colours. Please note that the colour references are only intended as a guide. For further information please see manufacturer websites, or contact your local MENU sales representative.

Selection of textiles or leather outside of our upholstery programme, is subject to final testing and approval. Additional deliverytime may also occur.

sorensenleather.com
nevotex.com
ca-mo.com



Upholstery Selection & Furniture

Use table to determine the upholstery options available for fabric-covered items.

	AFTERROOM COLLECTION	BRASILIA COLLECTION	CO CHAIR COLLECTION	HARBOUR CHAIR	HARBOUR LOUNGE CHAIR	KNITTING LOUNGE CHAIR	READY DINING CHAIR
LEATHER							
PRICE CATEGORY 1							
Dakar, Nevotex	•	•	•	•	•	•	•
Ultra, Sørensen Leather	•	•	•	•	•	•	•
PRICE CATEGORY 2							
Dunes, Sørensen Leather	•	•	•	•	•	•	
Nevada, Camo	•	•	•	•		•	•
Nuance, Sørensen Leather	•	•	•	•	•	•	•
Shade, Sørensen Leather	•	•	•	•	•	•	•
PRICE CATEGORY 3							
Royal Nubuck, Sørensen Leather	•	•	•	•	•	•	•
Sheepskin, Nevotex		•				•	
PRICE CATEGORY 4							
Elegance, Sørensen Leather	•	•	•	•	•	•	

1

Leather Category 1

Dakar

Leather

Price category 1
Manufacturer Nevotex
Materials Aniline leather
Thickness 0.9 - 1.1 mm
Certificate OEKO-TEX®



Tailor Sofa, Dark Stained Oak / Dakar 0311, by Rui Alves

Dakar

Leather

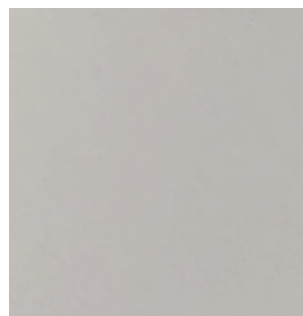
Price category 1
Manufacturer Nevotex
Materials Aniline leather
Thickness 0.9 - 1.1 mm
Certificate OEKO-TEX®



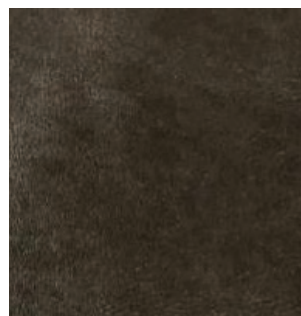
Dakar

Leather

Price category 1
Manufacturer Nevotex
Materials Aniline leather
Thickness 0.9 - 1.1 mm
Certificate OEKO-TEX®



01015 White



03009 Ciocco



04009 Parrot



04010 Pot-Porry



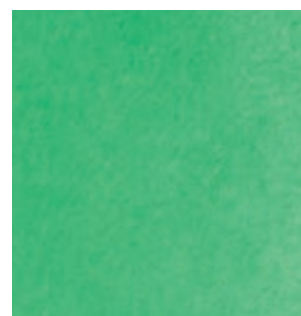
04060 Purple



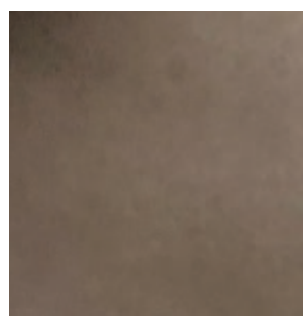
04109 Red



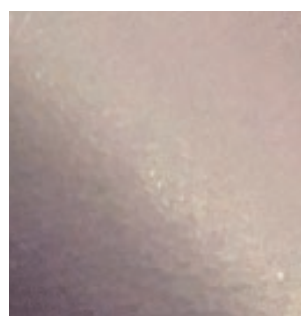
04147 Dark Red



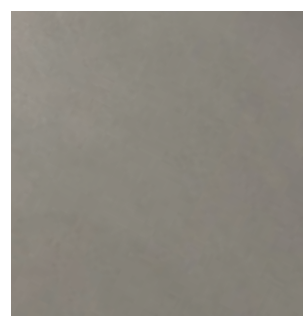
06013 Green



06048 Peatmoos



07008 Dark Purple



08079 Light Grey

Ultra

Leather

Price category 1
Manufacturer Sørensen Leather
Materials Protected leather
Thickness 0.9 - 1.1 mm



Ultra

Leather

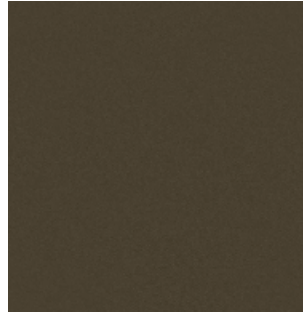
Price category 1
Manufacturer Sørensen Leather
Materials Protected leather
Thickness 0.9 - 1.1 mm



Ultra

Leather

Price category 1
Manufacturer Sørensen Leather
Materials Protected leather
Thickness 0.9 - 1.1 mm



Moss - 41569



Oat - 41568



Smoke - 41567

2

Leather Category 2

Dunes

Leather

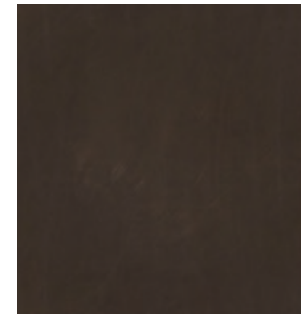
Price category 2
Manufacturer Sørensen Leather
Materials Aniline leather
Thickness 1.1 - 1.3 mm
Certificate Nordic Swan Ecolabel



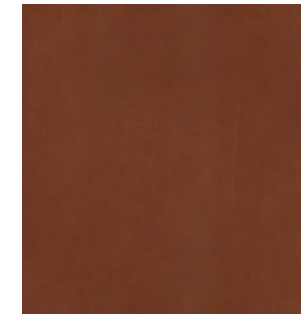
Dunes

Leather

Price category 2
Manufacturer Sørensen Leather
Materials Aniline leather
Thickness 1.1 - 1.3 mm
Certificate Nordic Swan Ecolabel



Dark Brown - 21001



Rust - 21002



Camel - 21004



Anthrazite - 21003



Cognac - 21000



Racing green - 21005

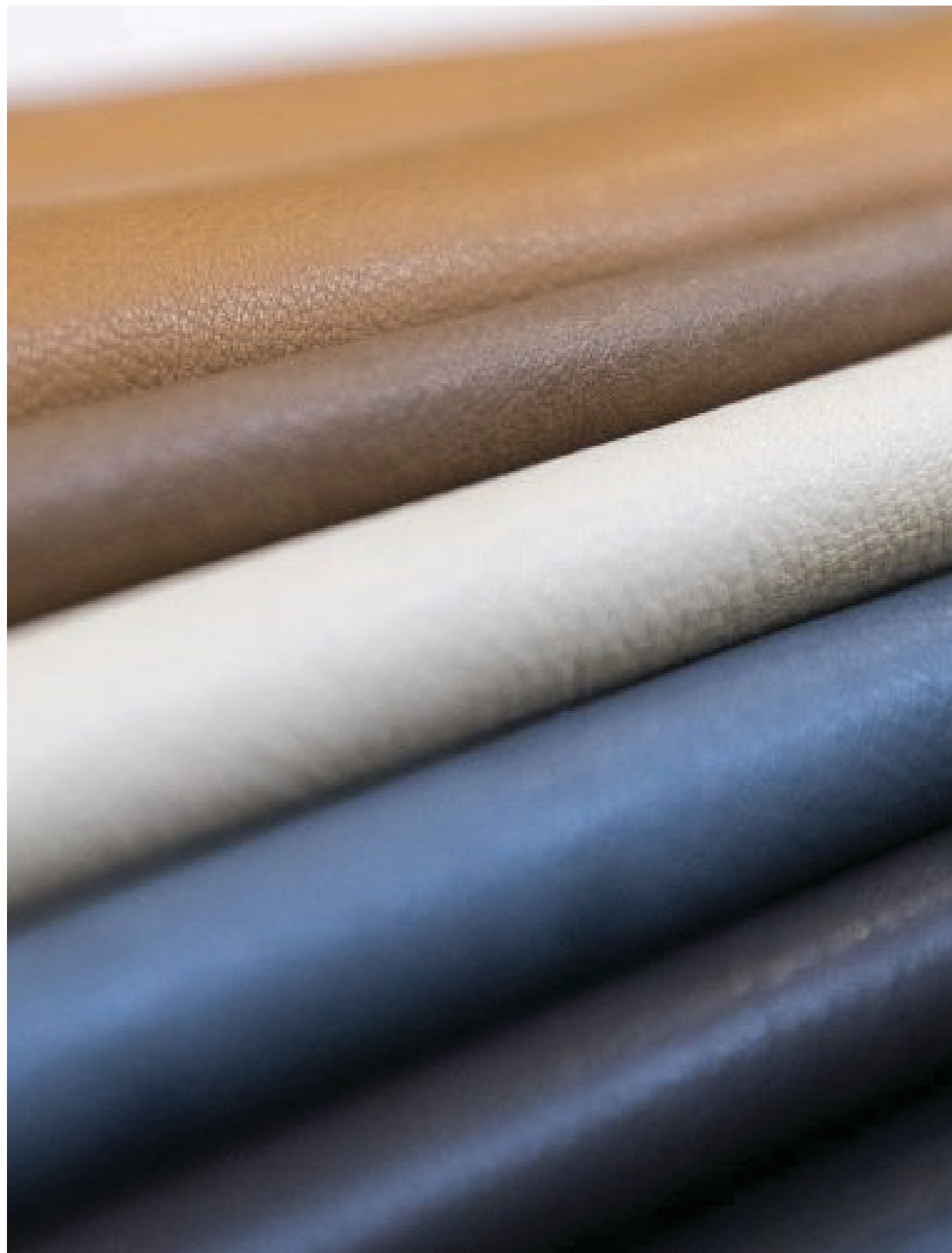


Grey - 21007

Nevada

Leather

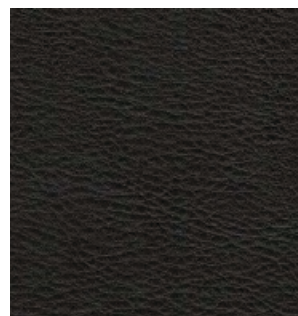
Price category 2
Manufacturer Camo
Materials Aniline leather
Thickness 1,3-1,5 mm



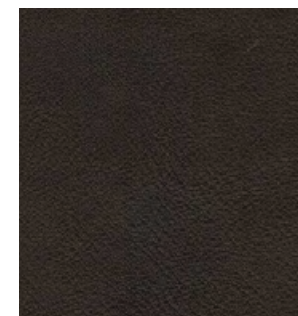
Nevada

Leather

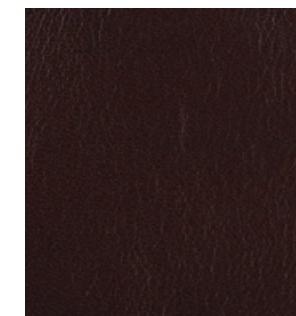
Price category 2
Manufacturer Camo
Materials Aniline leather
Thickness 1,3-1,5 mm



Black 0500



Brown 2000



Coffee 2034



Burgundy 2301



Ferrari Red 2333



Cognac 2488



Sand 2694

Nuance

Leather

Price category 2
Manufacturer Sørensen Leather
Materials Protected leather
Thickness 1.1 - 1.3 mm



Nuance

Leather

Price category 2
Manufacturer Sørensen Leather
Materials Protected leather
Thickness 1.1 - 1.3 mm



Shade

Leather

Price category 2
Manufacturer Sorensen Leather
Materials Protected Aniline leather
Thickness 1.1 - 1.3 mm



Shade

Leather

Price category 2
Manufacturer Sorensen Leather
Materials Protected Aniline leather
Thickness 1.1 - 1.3 mm



3

Leather Category 3

Royal Nubuck

Leather

Price category 3
Manufacturer Sørensen Leather
Materials Aniline leather
Thickness 1.2 – 1.6 mm



Harbour Dining Chair, Dark Stained Oak / Royal Nubuck 30253, by Norm Architects

Royal Nubuck

Leather

Price category 3
Manufacturer Sørensen Leather
Materials Aniline leather
Thickness 1.4 – 1.6 mm



Sheepskin

Sheepskin

Price category 3
Manufacturer Nevotex
Materials Sheepskin
Thickness 17 - 21mm



Knitting Lounge Chair, Walnut / Sheepskin, Sahara, by Ib Kofod-Larsen

Sheepskin

Sheepskin

Price category 3
Manufacturer Nevotex
Materials Sheepskin
Thickness 17 - 21mm



Nature



Sahara



Root

4

Leather Category 4

Elegance

Leather

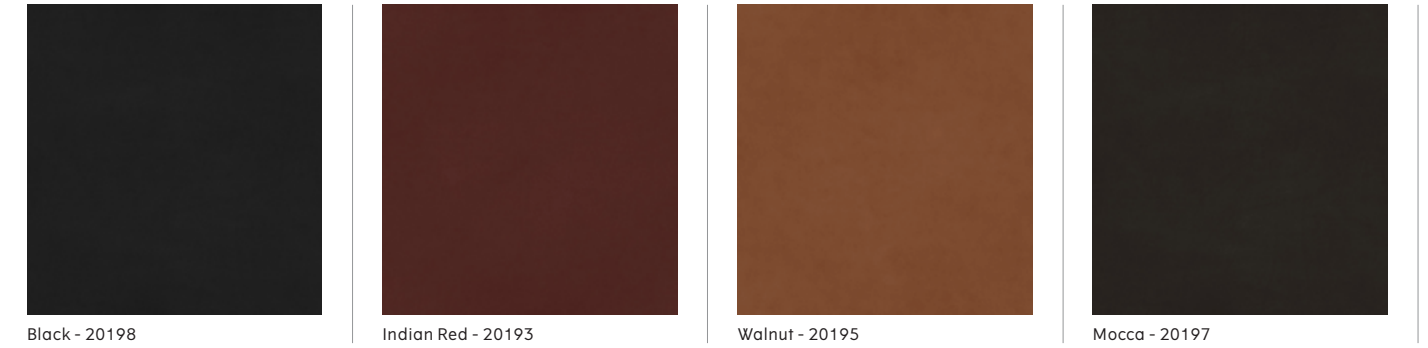
Price category 4
Manufacturer Sørensen Leather
Materials Aniline leather
Thickness 1.2 – 1.4 mm



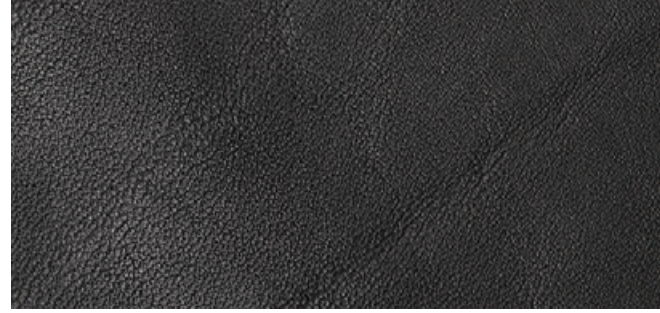
Elegance

Leather

Price category 4
Manufacturer Sørensen Leather
Materials Aniline leather
Thickness 1.2 – 1.4 mm



Natural Markings On Leather



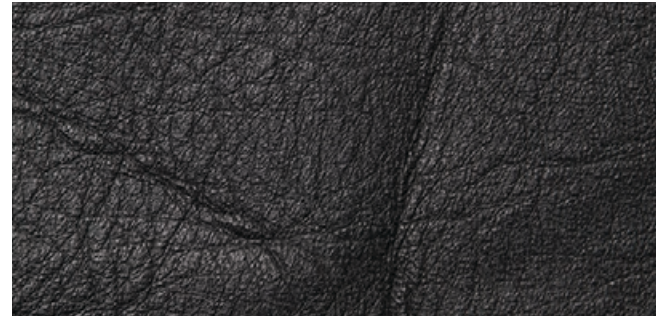
FAT WRINKLE



SCAR / INSECT BITES



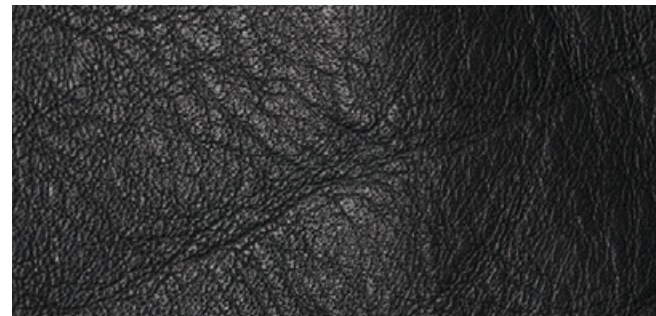
FOLDS



BUTCHING SCAR



HEALED SCARS



FAT WRINKLES

Individual and unique markings may appear on the leather and should not be considered defects.