

Gregg, sospensione

by Ludovica+Roberto Palomba

FOSCARINI



DESCRIPTION

Suspension lamp with diffused light. White satin finish hand-blown diffuser achieved using glass blowing procedure without turning the glass in the mould (referred to as "stationary"), subject to immersion in acid. The glass in the medium and large version is incorporated with a matt transparent injection moulded polycarbonate ring nut, which is in white polycarbonate in the small version. Matt transparent injection moulded polycarbonate lamp holder support. Stainless steel suspension cable and a transparent electrical cable. Ceiling rose with galvanised metal bracket and matt white batch-dyed ABS cover. Canopy decentralization kit – multiple canopy available (up to 6 or 9 suspension lamps).

MATERIALS

Blown satin glass and lacquered metal

COLORS

White

Gregg, sospensione

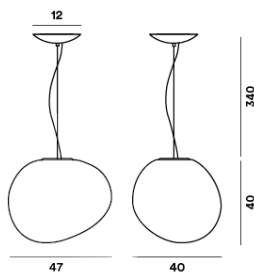
technical details

FOSCARINI

A product of natural inspiration and extensive research, Gregg's shape is reminiscent of a large pebble, its surface polished by the water. It could even be seen as the egg of some mythological beast, a symbol of creation and re-birth. Pure volume with a familiar ease of interpretation, yet one that is surprising, because Gregg's asymmetric shape changes depending on the point of view of the person observing it. This is a new solution where a traditional material like glass becomes a tool in the designer's hands to give an original character to an environment. There are three different sizes in the hanging, table, ceiling and wall versions and four different solutions for the floor lamp: the Gregg collection is one of the most versatile and transversal and can be easily placed in any type of setting. In the home environment the warm, uniform light produced by the white satined diffuser and its essential style have a strong functional and decorative value. Thanks to the closed shape of the diffuser, the bulb is screened in all directions, which protects from dazzle and makes it easy to place even at different heights. When part of a composition, Gregg is suitable for some of the most surprising uses. A 'raindrop' structure highlights the vertical extension of a window or stairway, producing an extremely striking effect. Vertical arrangement of a multitude of suspensions at various heights generates spectacular luminous false ceilings. The repetition of the volume along a line produces new perspectives to create trompe l'oeil effect. pag.

Gregg grande

SCHEMATIC & LIGHT EMISSION



MATERIAL

Blown satin glass and lacquered metal

COLORS



LIGHT SOURCE

LED retrofit, Fluo 1x 30W E27

CERTIFICATIONS



ENERGY EFFICIENCY

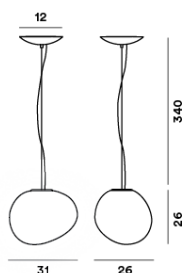
A+, A

ACCESSORIES

Kit B
Kit F
Kit M

Gregg media

SCHEMATIC & LIGHT EMISSION



MATERIAL

Blown satin glass and lacquered metal

COLORS



LIGHT SOURCE

LED retrofit 1x 21W E27

CERTIFICATIONS



ENERGY EFFICIENCY

A+

ACCESSORIES

Round multiple canopy
Linear multiple canopy 90 cm
Linear multiple canopy 135 cm
Kit B
Kit F

Gregg piccola

SCHEMATIC & LIGHT EMISSION



MATERIAL

Blown satin glass and lacquered metal

COLORS



LIGHT SOURCE

LED retrofit, Halo 2x 3+33W Dimmable G9

CERTIFICATIONS



ENERGY EFFICIENCY

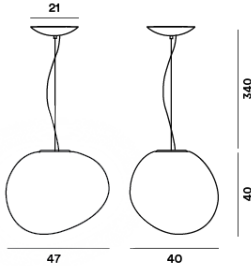
A+, A, C

ACCESSORIES

- Round multiple canopy
- Linear multiple canopy 90 cm
- Linear multiple canopy 135 cm
- Kit C
- Kit M

Gregg grande LED

SCHEMATIC & LIGHT EMISSION



MATERIAL

Blown satin glass and lacquered metal

COLORS



LIGHT SOURCE

LED 24W
LED 24W Dimmable

CERTIFICATIONS



ENERGY EFFICIENCY

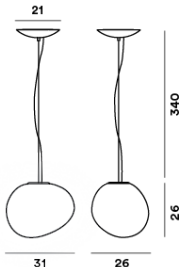
A+

ACCESSORIES

Kit B

Gregg media LED

SCHEMATIC & LIGHT EMISSION



MATERIAL

Blown satin glass and lacquered metal

COLORS



LIGHT SOURCE

LED 24W Dimmable E27
LED 24W E27

CERTIFICATIONS



ENERGY EFFICIENCY

A+, A

ACCESSORIES

Kit B

Gregg MIDI LED

SCHEMATIC & LIGHT EMISSION

MATERIAL

CERTIFICATIONS

Blown satin glass and lacquered metal



IP 20

COLORS



LIGHT SOURCE

LED 8,5W

ENERGY EFFICIENCY

A+, A

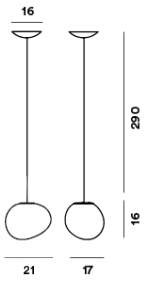
ACCESSORIES

Round multiple canopy

Linear multiple canopy 90 cm

Linear multiple canopy 135 cm

Kit C



Gregg, sospensione

Designer

FOSCARINI

LUDOVICA+ROBERTO PALOMBA

Ludovica + Roberto Palomba set up their own studio in Milan in 1994, and their joint expertise ranges from architectural planning, to interior design, and partnerships as product designers and art directors with leading international brands; they have received multiple, major accolades such as the Compasso d'Oro award.

Their philosophy is to create objects that interact in an immediate way with the people who choose them, creating an intimate, significant and long-lasting relationship, as testified by the durability of their designs. Multiple projects designed for Foscarini: from Birdie, a reinterpretation with a contemporary twist of the classic lampshade-lamp, to the Gregg, Tartan and Rituals models, explorations of unprecedented expressive possibilities for blown glass.



Gregg, sospensione
family

FOSCARINI



Gregg Sospensione



Gregg



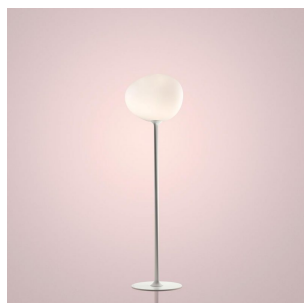
Gregg terra



Gregg



Gregg



Gregg