

# Fabric & Leather Overview

*Recommended by &Tradition*



**&Tradition®**

# Index

*Please click the fabric name to go to the fabric page directly.*

## Fabric

| Brand                 | Fabric name         |                |                  |
|-----------------------|---------------------|----------------|------------------|
| <b>Kvadrat</b>        | Balder*             | Harald*        | Tonus*           |
|                       | Canvas*             | Maple          | Uniform Melange* |
|                       | Clay*               | Moss*          | Vidar*           |
|                       | Divina Melange*     | Reflex         | Zero*            |
|                       | Duke*               | Remix*         |                  |
|                       | Fiord*              | Re-Wool*       |                  |
|                       | Fuse*               | Steelcut*      |                  |
|                       | Gentle*             | Steelcut Trio* |                  |
|                       | Hallingdal*         | Sunniva*       |                  |
| <b>Dedar</b>          | Atelier Moderne     | Karandash      | Svevo            |
|                       | Atlas               | Nimbus         |                  |
|                       | Karakorum           | Serafino       |                  |
| <b>Romo</b>           | Linara              | Loop*          | Ruskin*          |
| <b>Pierre Frey</b>    | La Toile Du Peintre |                |                  |
| <b>Continental</b>    | Skai Parotega       |                |                  |
| <b>Nevotex</b>        | Ritz*               |                |                  |
| <b>&amp;Tradition</b> | Velvet*             |                |                  |
| <b>JAB</b>            | Hot Madison*        |                |                  |
| <b>Scandilock</b>     | Sheepskin           |                |                  |

## Leather

| Brand                 | Fabric name |        |
|-----------------------|-------------|--------|
| <b>&amp;Tradition</b> | Noble       | Tailor |
| <b>Elmo Leather</b>   | Elmosoft    |        |

\* Contract-friendly fabrics

# *Fabric*

Fabric gr. 3

# Balder

\* Click [here](#) to see all available colours.

\* Due to variations in screen calibration, the fabrics shown here may not be 100% true to colour.

**Brand**

Kvadrat

**Composition**

68% new wool  
26% cotton  
6% nylon

**Durability**

100,000 Martindale

**Pilling**

4 (ISO 1-5)

**Lightfastness**

6

**Warranty**

10 years

**Produced In**

Norway

**Sustainability**

Greenguard Gold,  
HPD, EPD

**Width**

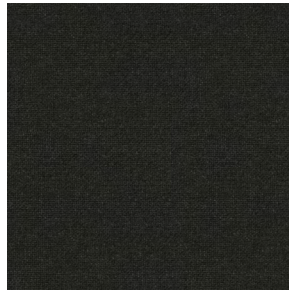
Approx. 140 cm  
(Approx. 55")

**Weight**

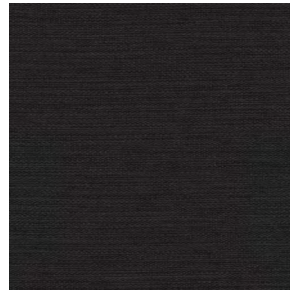
685 g/lin. m  
(22.09 oz/ly)

**Fire Test**

- AS/NZS 1530.3
- BS 5852 crib 5 with treatment
- BS 5852 part 1
- IMO FTP Code 2010 Part 8
- NFPA 260
- UNI 9175 11M
- US Cal. Bull. 117-2013
- EN 1021-1/2
- AS/NZS 3837 class 2
- ÖNORM B1/Q1



0382



0192



0692

**Available on**

**Catch**

JH1, JH2,  
JH15, JH13,  
JH14, JH16,  
JH17

**Elefy**

JH29, JH31,  
JH33, JH35,  
JH37

**In Between**

SK2, SK8,  
SK10

**Rely**

HW7-10,  
HW12-15,  
HW17-20,  
HW22-25,  
HW29-32,  
HW35-37,  
HW40-42,  
HW45-47,  
HW50-52,  
HW55-57,  
HW72-75,

HW77-80,  
HW82-85,

HW87-90,  
HW92-95,  
HW97-100,  
HW102-105  
Seat pad

**Betty**

TK3

**Boomerang**

HM1, HM2

**Mayor**

AJ5, AJ6

**Loafer**

SC24, SC23,  
SC25, SC26

**Pavilion**

AV3, AV4,  
AV12, AV13,  
AV6, AV11,  
AV8, AV14,  
AV10, AV15

**Margas**

LC1, LC2,  
LC3

**Cloud**

LN1, LN2,  
LN3.2, LN5,  
LN6, LN7

**Develius**

EV1-EV7

**Fly**

SC1, SC2,  
SC3, SC12,  
SC9, SC10

**Inland**

AV22  
AV23

[BACK TO INDEX](#)

Fabric gr. 1

# Canvas

\* Click [here](#) to see all available colours.

\* Due to variations in screen calibration, the fabrics shown here may not be 100% true to colour.

**Brand**

Kvadrat

**Composition**

90% new wool worsted  
10% nylon

**Durability**

100,000 Martindale

**Pilling**

4 (ISO 1-5)

**Lightfastness**

5-6

**Warranty**

10 years

**Produced In**

United Kingdom

**Sustainability**

EU Ecolabel,  
Greenguard Gold,  
HPD, EPD

**Width**

Approx. 140 cm  
(Approx. 55")

**Weight**

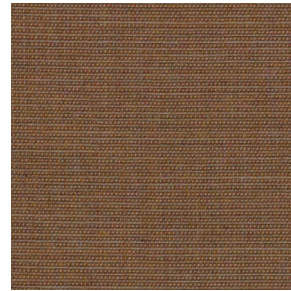
480 g/lin. m  
(15.48 oz/ly)

**Fire Test**

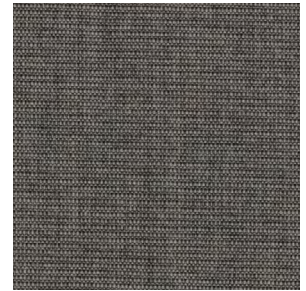
- AS/NZS 1530.3
- BS 5852 crib 5 with treatment
- BS 5852 ignition source 3
- BS 5852 part 1
- IMO FTP code 2010 Part 8
- NF D 60 013
- NFPA 260
- SN 198 898 5.3 with treatment
- UNI 9175 1IM
- US Cal. Bull. 117-2013
- EN 1021-1/2
- ÖNORM B1/Q1



0356



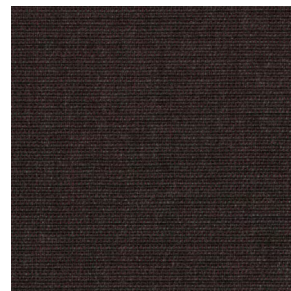
0254



0134



0794



0374



0996

**Available on**

**Catch**

JH1, JH2,  
JH15, JH13,  
JH14, JH16,  
JH17

**Elefy**

JH29, JH31,  
JH33, JH35,  
JH37

**In Between**

SK2, SK8,  
SK10

**Pavilion**

AV3, AV4,  
AV12, AV13,  
AV6, AV11,  
AV8, AV14,  
AV10, AV15

**Betty**

TK3

**Boomerang**

HM1, HM2

**Wulff**

ATD2, ATD3

**Margas**

LC1, LC2,  
LC3

**Loafer**

SC24, SC23,  
SC25, SC26

**Mayor**

AJ5, AJ6

**Rely**

HW7-10,  
HW12-15,  
HW17-20,  
HW22-25,  
HW29-32,  
HW35-37,  
HW40-42,  
HW45-47,  
HW50-52,  
HW55-57,  
HW72-75,  
HW77-80,  
HW82-85,

HW87-90,  
HW92-95,  
HW97-100,  
HW102-105  
Seat pad

**Cloud**

LN1, LN2,  
LN3.2, LN5,  
LN6, LN7

**Develius**

EV1-EV7

**Isole**

NN1A-  
NN1G

**Inland**

AV22  
AV23

**Fly**

SC1, SC2,  
SC3, SC12,  
SC9, SC10

[BACK TO INDEX](#)

Fabric gr. 3

# Clay

\* Click [here](#) to see all available colours.

\* Due to variations in screen calibration, the fabrics shown here may not be 100% true to colour.

**Brand**  
Kvadrat

**Composition**  
76% linen  
21% cotton  
3% polyester

**Durability**  
45,000 Martindale

**Pilling**  
4 (ISO 1-5)

**Lightfastness**  
5

**Warranty**  
2 years

**Produced In**  
Turkey

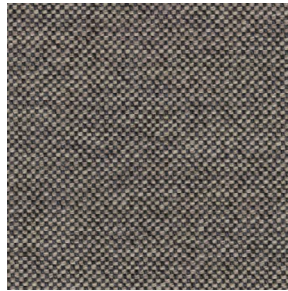
**Sustainability**  
Greenguard Gold,  
HPD, EPD

**Width**  
140 cm (55")

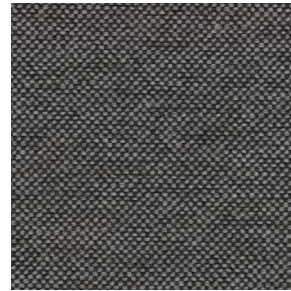
**Weight**  
768 g/lin. m  
(24.77 oz/ly)

**Fire Test**

- BS 5852 crib 5 with treatment
- BS 5852 part 1
- EN 1021-1/2



0009



0013



0014

**Available on**

**Catch**

JH1, JH2,  
JH15, JH13,  
JH14, JH16,  
JH17

**Elefy**

JH29, JH31,  
JH33, JH35,  
JH37

**In Between**

SK2, SK8,  
SK10

**Pavilion**

AV3, AV4,  
AV12, AV13,  
AV6, AV11,  
AV8, AV14,  
AV10, AV15

**Rely**

HW7-10,  
HW12-15,  
HW17-20,  
HW22-25,  
HW29-32,  
HW35-37,  
HW40-42,  
HW45-47,  
HW50-52,  
HW55-57,  
HW72-75,  
HW77-80,  
HW82-85,

HW87-90,  
HW92-95,  
HW97-100,  
HW102-105  
Seat pad

**Betty**  
TK3

**Margas**  
LC1, LC2,  
LC3

**Cloud**

LN1, LN2,  
LN3.2, LN5,  
LN6, LN

**Develius**  
EV1-EV7

**Inland**

AV22  
AV23

[BACK TO INDEX](#)

Fabric gr. 2

# Divina Melange

\* Click [here](#) to see all available colours.

\* Due to variations in screen calibration, the fabrics shown here may not be 100% true to colour.

**Brand**

Kvadrat

**Composition**

100% new wool

**Durability**

45,000 Martindale

**Pilling**

3 (ISO 1-5)

**Lightfastness**

6-7

**Warranty**

10 years

**Produced In**

United Kingdom

**Sustainability**

EU Ecolabel,  
Greenguard Gold,  
HPD, EPD

**Width**

Approx. 150 cm (approx. 59")

**Weight**

840 g/lin. m (27.09 oz/ly)

**Fire Test**

- AS/NZS 1530.3
- BS 5852 Crib 5
- BS 5852 part 1
- BS 5867 part 2 type B
- IMO FTP Code 2010 Part 8
- NF D 60 013
- NFPA 260
- SN 198 898 5.3 with treatment
- UNI 9175 1IM
- US Cal. Bull 117-2012
- EN 1021-1/2
- EN 13501, C-s1,, d0, glued
- Chinese GB 50222 B1 with treatment
- ÖNORM B1/Q1
- NFPA 701 with treatment
- ASTM E84 Class B Unadhered
- ASTM E84 Class A Adhered



0170



0280

**Available on**

**Catch**

JH1, JH2,  
JH15, JH13,  
JH14, JH16,  
JH17

**Elefy**

JH29, JH31,  
JH33, JH35,  
JH37

**Betty**

TK3

**In Between**

SK2, SK8,  
SK10

**Pavilion**

AV3, AV4,  
AV12, AV13,  
AV6, AV11,  
AV8, AV14,  
AV10, AV15

**Rely**

HW7-10,  
HW12-15,  
HW17-20,  
HW22-25,  
HW29-32,  
HW35-37,  
HW40-42,  
HW45-47,  
HW50-52,  
HW55-57,  
HW72-75,  
HW77-80,  
HW82-85,

HW87-90,  
HW92-95,  
HW97-100,  
HW102-105  
Seat pad

**Boomerang**

HM1, HM2

**Loafer**

SC24, SC23,  
SC25, SC26

**Mayor**

AJ5, AJ6

**Margas**

LC1, LC2,  
LC3

**Cloud**

LN1, LN2,  
LN3.2, LN5,  
LN6, LN7

**Develius**

EV1-EV7

**Fly**

SC1, SC2,  
SC3, SC12,  
SC9, SC10

**Inland**

AV22  
AV23

[BACK TO INDEX](#)

Fabric gr. 2

# Duke

\* Click [here](#) to see all available colours.

\* Due to variations in screen calibration, the fabrics shown here may not be 100% true to colour.

**Brand**

Kvadrat

**Composition**

70% viscose  
15% cotton  
8% polyester  
7% polyacrylic

**Durability**

70,000 Martindale

**Pilling**

4-5 (ISO 1-5)

**Lightfastness**

5 (ISO 1-8)

**Warranty**

2 years

**Produced In**

Italy

**Width**

140 cm (55")

**Weight**

640 g/lin. m  
(20.64 oz/ly)

**Fire Test**

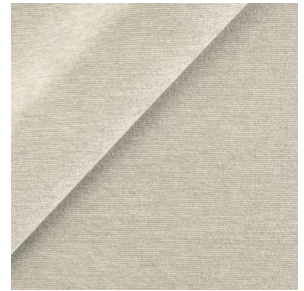
• BS 5852 crib 5 with treatment



006



0014



0001

**Available on**

**Catch**

JH1, JH2,  
JH15, JH13,  
JH14, JH16,  
JH17

**Elefy**

JH29, JH31,  
JH33, JH35,  
JH37

**Betty**

TK3

**In Between**

SK2, SK8,  
SK10

**Pavilion**

AV3, AV4,  
AV12, AV13,  
AV6, AV11,  
AV8, AV14,  
AV10, AV15

**Rely**

HW7-10,  
HW12-15,  
HW17-20,  
HW22-25,  
HW29-32,  
HW35-37,  
HW40-42,  
HW45-47,  
HW50-52,  
HW55-57,  
HW72-75,  
HW77-80,

HW82-85,  
HW87-90,  
HW92-95,  
HW97-100,  
HW102-105  
Seat pad

**Boomerang**

HM1, HM2

**Loafer**

SC24, SC23,  
SC25, SC26

**Margas**

LC1, LC2,  
LC3

**Mayor**

AJ5, AJ6

**Cloud**

LN1, LN2,  
LN3.2, LN5,  
LN6, LN7

**Develius**

EV1-EV7

**Fly**

SC1, SC2,  
SC3, SC12,  
SC9, SC10

**Inland**

AV22  
AV23



Fabric gr. 2

# Fiord

\* Click [here](#) to see all available colours.

\* Due to variations in screen calibration, the fabrics shown here may not be 100% true to colour.

**Brand**

Kvadrat

**Composition**

92% new wool worsted

8% nylon

**Durability**

60,000 Martindale

**Pilling**

4-5 (ISO 1-5)

**Lightfastness**

6

**Warranty**

10 years

**Produced In**

Norway

**Sustainability**

EU Ecolabel,

Greenguard Gold,

HPD, EPD

**Width**

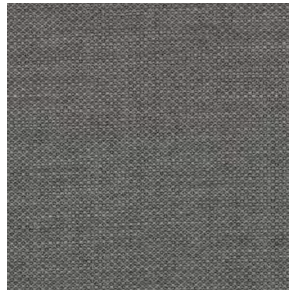
Approx. 140 cm (Approx. 55")

**Weight**

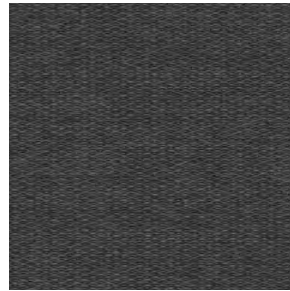
500 g/lin. m (16.13 oz/ly)

**Fire Test**

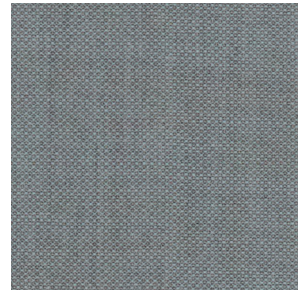
- BS 5852 crib 5 with treatment
- BS 5852 part 1
- IMO FTP Code 2010 Part 8
- NF D 60 013
- NFPA 1260
- SN 198 898 5.3 with treatment
- UNI 9175 1IM
- US Cal. Bull 117-2013
- EN 1021-1/2
- ASTM E84 Class A Adhered
- ASTM E84 Class A Unadhered
- AS/NZS 3837 class 2
- GB 50222 B1 with treatment (Chinese)
- ÖNORM B1/Q1



0151



0171



0821



0382

**Available on**

**Catch**

JH1, JH2,  
JH15, JH13,  
JH14, JH16,  
JH17

**Elefy**

JH29, JH31,  
JH33, JH35,  
JH37

**In Between**

SK2, SK8,  
SK10

**Pavilion**

AV3, AV4,  
AV12, AV13,  
AV6, AV11,  
AV8, AV14,  
AV10, AV15

**Rely**

HW7-10,  
HW12-15,  
HW17-20,  
HW22-25,  
HW29-32,  
HW35-37,

HW40-42,  
HW45-47,  
HW50-52,  
HW55-57,  
HW72-75,  
HW77-80,  
HW82-85,  
HW87-90,  
HW92-95,  
HW97-100,  
HW102-105  
Seat pad

**Betty**

TK3

**Boomerang**

HM1, HM2

**Little Petra**

VB1, VB2

**Pouf**

ATD1

**Wulff**

ATD2, ATD3

**Margas**

LC1, LC2,  
LC3

**Loafer**

SC24, SC23,  
SC25, SC26

**Mayor**

AJ5, AJ6

**Develius**

EV1-EV7

**Cloud**

LN1, LN2,  
LN3.2, LN5,  
LN6, LN7

**Fly**

SC1, SC2,  
SC3, SC12,  
SC9, SC10

**Inland**

AV22  
AV23

[BACK TO INDEX](#)

Fabric gr. 4

# Fuse

\* Click [here](#) to see all available colours.

\* Due to variations in screen calibration, the fabrics shown here may not be 100% true to colour.

**Brand**

Kvadrat

**Composition**

65% new wool worsted  
23% cotton  
8% viscose  
4% nylon

**Durability**

100,000 Martindale

**Pilling**

3-4 (ISO 1-5)

**Lightfastness**

6-7

**Warranty**

10 years

**Produced In**

Norway

**Sustainability**

Greenguard Gold,  
HPD, EPD

**Width**

Approx. 143 cm  
(Approx. 56.5")

**Weight**

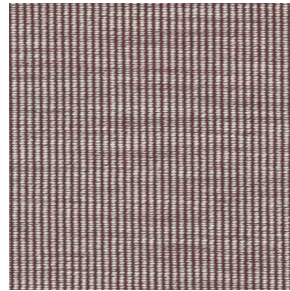
810 g/lin. m  
(26.13 oz/ly)

**Fire Test**

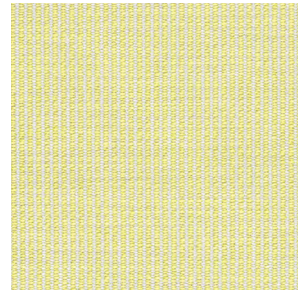
- BS 5852 Crib 5
- BS 5852 part 1
- IMO FTP Code 2010 Part 8
- NF D 60 013
- UNI 9175 1IM
- US Cal. Bull. 117-2013
- EN 1021-1/2
- ÖNORM B1/Q1



0351



0631



0421

**Available on**

**Catch**

JH1, JH2,  
JH15, JH13,  
JH14, JH16,  
JH17

**Elefy**

JH29, JH31,  
JH33, JH35,  
JH37

**In Between**

SK2, SK8,  
SK10

**Pavilion**

AV3, AV4,  
AV12, AV13,  
AV6, AV11,  
AV8, AV14,  
AV10, AV15

**Rely**

HW7-10,  
HW12-15,  
HW17-20,  
HW22-25,  
HW29-32,  
HW35-37,  
HW40-42,  
HW45-47,  
HW50-52,  
HW55-57,  
HW72-75,  
HW77-80,

HW82-85,  
HW87-90,  
HW92-95,  
HW97-100,  
HW102-105  
Seat pad

**Betty**

TK3

**Boomerang**

HM1, HM2

**Loafer**

SC24, SC23,  
SC25, SC26

**Margas**

LC1, LC2,  
LC3

**Mayor**

AJ5, AJ6

**Develius**

EV1-EV7

**Cloud**

LN1, LN2,  
LN3.2, LN5,  
LN6, LN7

**Fly**

SC1, SC2,  
SC3, SC12,  
SC9, SC10

[BACK TO INDEX](#)

Fabric gr. 4

# Gentle

\* Click [here](#) to see all available colours.

\* Due to variations in screen calibration, the fabrics shown here may not be 100% true to colour.

**Brand**

Kvadrat

**Composition**

60% new wool  
20% nylon  
20% polyester

**Durability**

90,000 Martindale

**Pilling**

4-5 (ISO 1-5)

**Lightfastness**

6-7 (ISO 1-8)

**Produced In**

Holland

**Width**

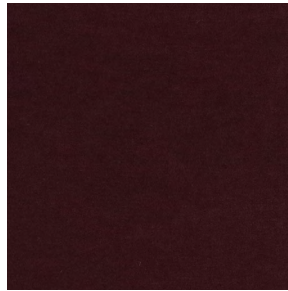
167 cm (65.5")

**Weight**

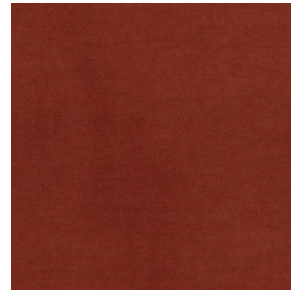
970 g/lin. m  
(31.29 oz/ly)

**Fire Test**

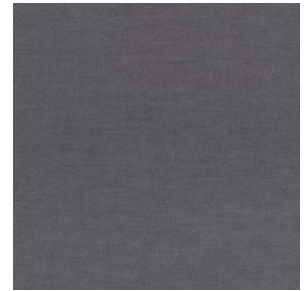
- BS 5852 crib 5 with treatment
- BS 5852 part 1
- IMO FTP Code 2010 Part 8
- UNI 9175 1IM
- US Cal. Bull 117-2013
- DIN 4102 B2
- EN 1021-1/2
- ASTM E84 Class A Unadhered



0683



0373



0133

**Available on**

**Catch**

JH1, JH2,  
JH15, JH13,  
JH14, JH16,  
JH17

**Elefy**

JH29, JH31,  
JH33, JH35,  
JH37

**Rely**

HW7-10,  
HW12-15,  
HW17-20,  
HW22-25,  
HW29-32,  
HW35-37,  
HW40-42,  
HW45-47,  
HW50-52,  
HW55-57,  
HW72-75,  
HW77-80,

HW82-85,  
HW87-90,  
HW92-95,  
HW97-100,  
HW102-105  
Seat pad

**Margas**

LC1, LC2,  
LC3

**Isole**

NN1A-NN1G

[BACK TO INDEX](#)

Fabric gr. 2

# Hallingdal

\* Click [here](#) to see all available colours.

\* Due to variations in screen calibration, the fabrics shown here may not be 100% true to colour.

**Brand**

Kvadrat

**Composition**

70% new wool  
30% viscose

**Durability**

100,000 Martindale

**Pilling**

3-4 (ISO 1-5)

**Lightfastness**

7

**Warranty**

10 years

**Produced In**

Norway

**Sustainability**

EU Ecolabel, Greenguard Gold, HPD, EPD

**Width**

Approx. 130 cm (Approx. 51")

**Weight**

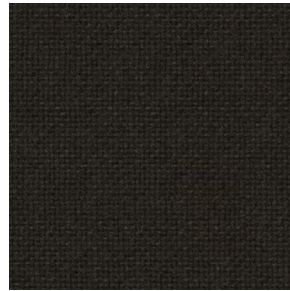
795 g/lin. m (25.64 oz/ly)

**Fire Test**

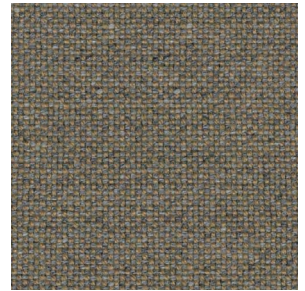
- AS/NZS 1530.3
- BS 5852 Crib 5
- BS 5852 part 1
- IMO FTP Code 2010 Part 8
- NF D 60 013
- NFPA 260
- UNI 9175 1IM
- US Cal. Bull. 117-2013
- EN 1021-1/2
- ASTM E84 Class A Adhered
- SN 198 898 5.3 with treatment
- ÖNORM B1/Q1
- BG 50222 B1 with treatment (Chinese)
- AS/NZS 3837 class 2



0376



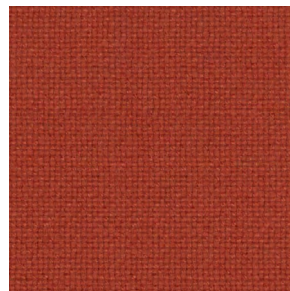
0390



0227



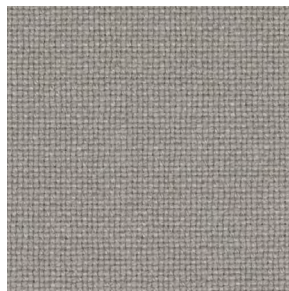
0694



0600



0180



0113



0100



0130

**Available on**

**Catch**

JH1, JH2,  
JH15, JH13,  
JH14, JH16,  
JH17

**Elefy**

JH29, JH31,  
JH33, JH35,  
JH37

**Betty**

TK3

**In Between**

SK2, SK8,  
SK10

**Pavilion**

AV3, AV4,  
AV12, AV13,  
AV6, AV11,  
AV8, AV14,  
AV10, AV15

**Boomerang**

HM1, HM2

**Rely**

HW7-10,  
HW12-15,  
HW17-20,  
HW22-25,  
HW29-32,  
HW35-37,  
HW40-42,  
HW45-47,  
HW50-52,  
HW55-57,  
HW72-75,  
HW77-80,  
HW82-85,

HW87-90,  
HW92-95,  
HW97-100,  
HW102-105  
Seat pad

**Little Petra**

VB1, VB2

**Pouf**

ATD1

**Wulff**

ATD2, ATD3

**Margas**

LC1, LC2,  
LC3

**Loafer**

SC24, SC23,  
SC25, SC26

**Mayor**

AJ5, AJ6

**Cloud**

LN1, LN2,  
LN3.2, LN5,  
LN6, LN7

**Develius**

EV1-EV7

**Isole**

NN1A-  
NN1G

**Fly**

SC1, SC2,  
SC3, SC12,  
SC9, SC10

**Inland**

AV22  
AV23

[BACK TO INDEX](#)

Fabric gr. 3

# Harald

\* Click [here](#) to see all available colours.

\* Due to variations in screen calibration, the fabrics shown here may not be 100% true to colour.

**Brand**

Kvadrat

**Composition**

100% cotton

**Durability**

100,000 Martindale

**Pilling**

4-5 (ISO 1-5)

**Lightfastness**

5-6 (ISO 1-8)

**Warranty**

10 years

**Produced In**

Italy

**Sustainability**

Greenguard Gold,  
HPD, EPD

**Width**

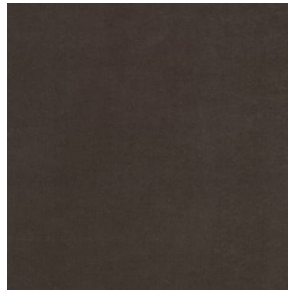
Approx. 140 cm  
(Approx. 55")

**Weight**

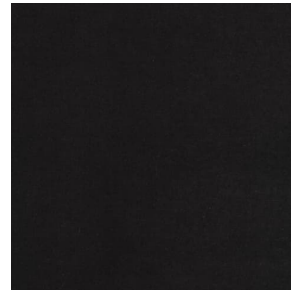
520 g/lin. m  
(16.77 oz/ly)

**Fire Test**

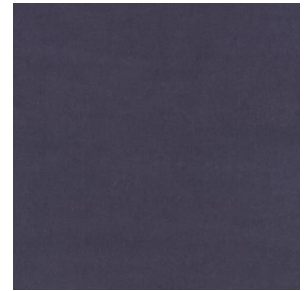
- AS/NZS 1530.3
- EN 1021-1
- AS/NZS 3837 class 1



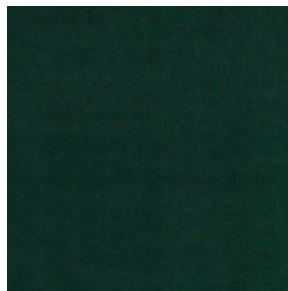
0242



0283



0652



0952



0182

**Available on**

**In Between**

SK2, SK8,  
SK10

**Pavilion**

AV3, AV4,  
AV12, AV13,  
AV6, AV11,  
AV8, AV14,  
AV10, AV15

**Boomerang**

HM1, HM2

**Loafer**

SC24, SC23,  
SC25, SC26

**Mayor**

AJ5, AJ6

**Develius**

EV1-EV7

**Fly**

SC1, SC2,  
SC3, SC12,  
SC9, SC10

**Inland**

AV22  
AV23

Fabric gr. 2

# Maple

\* Click [here](#) to see all available colours.

\* Due to variations in screen calibration, the fabrics shown here may not be 100% true to colour.

**Brand**

Kvadrat

**Composition**

81% Viscose  
15% linen  
4% Polyester

**Durability**

30,000 Martindale

**Pilling**

4-5 (ISO 1-5)

**Lightfastness**

5

**Warranty**

10 years

**Produced In**

Turkey

**Sustainability**

Greenguard Gold,  
HPD, EPD

**Width**

Approx. 140 cm  
(Approx. 55")

**Weight**

910 g/lin. m  
(29.35 oz/ly)

**Fire Test**

- AS/NZS 1530.3
- BS 5852 crib 5 with treatment
- BS 5852 part 1
- IMO FTP Code 2010 Part 8
- NFPA 260
- EN 1021-1/2
- US Cal. Bull. 117-2013
- AS/NZS 3837 class 2



0112



0222



0392

**Available on**

**In Between**  
SK2, SK8,  
SK10

**Pavilion**  
AV3, AV4,  
AV12, AV13,  
AV6, AV11,  
AV8, AV14,  
AV10, AV15

**Betty**  
TK3  
  
**Boomerang**  
HM1, HM2

**Loafer**  
SC24, SC23,  
SC25, SC26

**Mayor**  
AJ5, AJ6

**Cloud**  
LN1, LN2,  
LN3.2, LN5,  
LN6, LN7

**Develius**  
EV1-EV7

**Fly**  
SC1, SC2,  
SC3, SC12,  
SC9, SC10

**Inland**  
AV22  
AV23

Fabric gr. 3

# Moss

\* Click [here](#) to see all available colours.

\* Due to variations in screen calibration, the fabrics shown here may not be 100% true to colour.

**Brand**

Kvadrat

**Composition**

52% cotton  
22% viscose  
14% polyacrylic  
6% linen  
3% nylon  
3% Polyester

**Durability**

50,000 Martindale

**Pilling**

4-5 (ISO 1-5)

**Lightfastness**

5-7 (ISO 1-8)

**Warranty**

2 years

**Produced In**

Belgium

**Width**

138 cm (54.5")

**Weight**

918 g/lin. m  
(29.61 oz/ly)

**Fire Test**

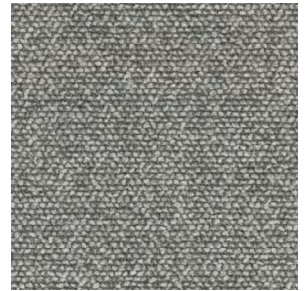
- EN 1021-1/2
- BS 5852 crib 5 with treatment
- BS 5852 part 1



0013



0018



0006



0009

---

**Available on**

|               |               |
|---------------|---------------|
| <b>Loafer</b> | <b>Inland</b> |
| SC24, SC23,   | AV22          |
| SC25, SC26    | AV23          |

Fabric gr. 4

# Reflex

\* Click [here](#) to see all available colours.

\* Due to variations in screen calibration, the fabrics shown here may not be 100% true to colour.

**Brand**

Kvadrat

**Composition**

87% new wool worsted

8% viscose

5% nylon

**Durability**

100,000 Martindale

**Pilling**

3-4 (ISO 1-5)

**Lightfastness**

6-7

**Warranty**

10 years

**Produced in**

Norway

**Sustainability**

Greenguard Gold,

HPD

EPD

**Width**

Approx. 143 cm

(Approx. 56 ½")

**Weight**

640 g/lin. m

(20.64 oz/ly)

**Fire test**

- BS 5852 part 1
- IMO FTP Code 2010 Part 8
- NF D 60 013
- SN 198 898 5.3 with treatment
- UNI 9175 1IM
- US Cal. Bull. 117-2013
- ÖNORM B2/Q1
- EN 1021-1/2
- BS 5852 crib 5 with treatment

---

**Available on**

**Boomerang**

HM1, HM2



Fabric gr. 1

# Remix

\* Click [here](#) to see all available colours.

\* Due to variations in screen calibration, the fabrics shown here may not be 100% true to colour.

**Brand**

Kvadrat

**Composition**

90% new wool worsted  
10% nylon

**Durability**

100,000 Martindale

**Pilling**

4 (ISO 1-5)

**Lightfastness**

6

**Warranty**

10 years

**Produced In**

United Kingdom

**Sustainability**

EU Ecolabel, Greenguard gold,  
HPD, EPD

**Width**

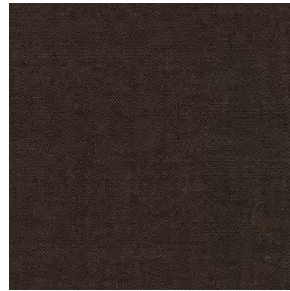
Approx. 140 cm (Approx. 55")

**Weight**

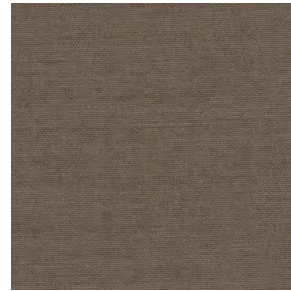
420 g/lin. m (13.55 oz/ly)

**Fire Test**

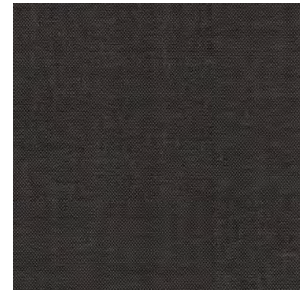
- AS/NZS 1530.3
- BS 5852 crib 5 with treatment
- BS 5852 ignition source 3
- BS 5852 part 1
- IMO FTP Code 2010 Part 7 with treatment
- IMO FTP Code 2010 Part 8
- NF D 60 013
- NFPA 260
- SN 198 898 5.3 with treatment
- UNI 9175 11M
- US Cal. Bull 117-2013
- EN 1021-1/2
- AS/NZS 3837 class 2
- ÖNORM B1/Q1
- ASTM E84 Class A Unadhered
- ASTM E84 Class A Adhered
- GB 50222 B1 with treatment (Chinese)



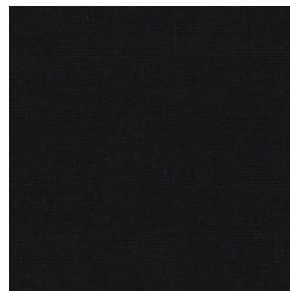
0356



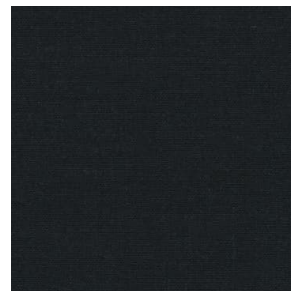
0233



0276



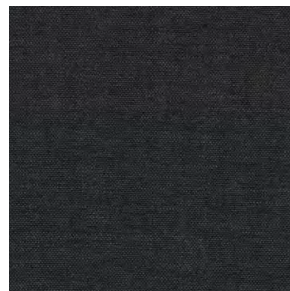
0296



0996



0133



0173



0383

**Available on**

**Catch**

JH1, JH2,  
JH15, JH13,  
JH14, JH16,  
JH17

**Elefy**

JH29, JH31,  
JH33, JH35,  
JH37

**In Between**

SK2, SK8,  
SK10

**Pavilion**

AV3, AV4,  
AV12, AV13,  
AV6, AV11,  
AV8, AV14,  
AV10, AV15

**Rely**

HW7-10,  
HW12-15,  
HW17-20,  
HW22-25,  
HW29-32,  
HW35-37,  
HW40-42,  
HW45-47,  
HW50-52,  
HW55-57,  
HW72-75,  
HW77-80,

HW82-85,  
HW87-90,  
HW92-95,  
HW97-100,  
HW102-105  
Seat pad

**Betty**

TK3

**Boomerang**

HM1, HM2

**Wulff**

ATD2, ATD3

**Margas**

LC1, LC2,  
LC3

**Loafer**

SC24, SC23,  
SC25, SC26

**Mayor**

AJ5, AJ6

**Cloud**

LN1, LN2,  
LN3.2, LN5,  
LN6, LN7

**Develius**

EV1-EV7

**Isole**

NN1A-NN1G

**Fly**

SC1, SC2,  
SC3, SC12,  
SC9, SC10

**Inland**

AV22  
AV23

[BACK TO INDEX](#)

Fabric gr. 1

# Re-Wool

\* Click [here](#) to see all available colours.

\* Due to variations in screen calibration, the fabrics shown here may not be 100% true to colour.

**Brand**

Kvadrat

**Composition**

45% new wool worsted  
45% recycled wool  
10% nylon

**Durability**

100,000 Martindale

**Pilling**

4 (ISO 1-5)

**Lightfastness**

5-7 (ISO 1-8)

**Warranty**

10 years

**Produced In**

United Kingdom

**Sustainability**

EU Ecolabel,  
Greenguard gold,  
HPD, EPD

**Width**

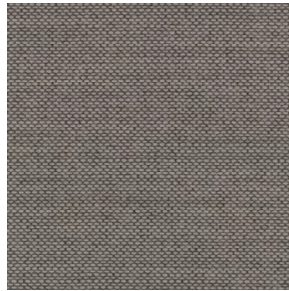
Approx. 140 cm  
(Approx. 55")

**Weight**

540 g/lin. m (17.42 oz/ly)

**Fire Test**

- AS/NZS 15030.3
- BS 5852 crib 5 with treatment
- BS 5852 ignition source 3
- BS 5852 part 1
- IMO FTP Code 2010 Part 8
- NF D 60 013
- UNI 9175 11M
- US Cal. Bull. 117-2013
- EN 1021-1/2
- SN 198 898 5.3 with treatment
- AS/NZS 3837 class 2
- ÖNORM B1/Q1



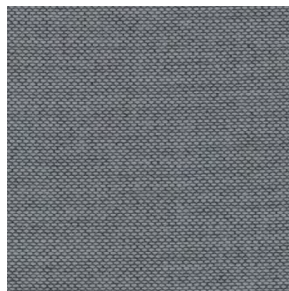
0128



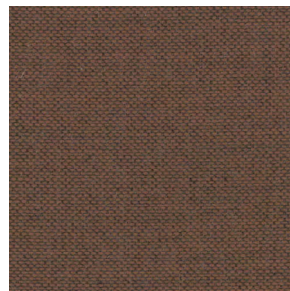
0198



0218



0718



0378

**Available on**

**Catch**

JH1, JH2,  
JH15, JH13,  
JH14, JH16,  
JH17

**Elefy**

JH29, JH31,  
JH33, JH35,  
JH37

**Betty**

TK3

**In Between**

SK2, SK8,  
SK10

**Pavilion**

AV3, AV4,  
AV12, AV13,  
AV6, AV11,  
AV8, AV14,  
AV10, AV15

**Rely**

HW7-10,  
HW12-15,  
HW17-20,  
HW22-25,  
HW29-32,  
HW35-37,  
HW40-42,  
HW45-47,  
HW50-52,  
HW55-57,  
HW72-75,  
HW77-80,  
HW82-85,

HW87-90,  
HW92-95,  
HW97-100,  
HW102-105  
Seat pad

**Boomerang**

HM1, HM2

**Wulff**

ATD2, ATD3

**Develius**

EV1-EV7

**Margas**

LC1, LC2,  
LC3

**Loafer**

SC24, SC23,  
SC25, SC26

**Mayor**

AJ5, AJ6

**Cloud**

LN1, LN2,  
LN3.2, LN5,  
LN6, LN7

**Fly**

SC1, SC2,  
SC3, SC12,  
SC9, SC10

**Inland**

AV22  
AV23

[BACK TO INDEX](#)

Fabric gr. 2

# Steelcut

\* Click [here](#) to see all available colours.

\* Due to variations in screen calibration, the fabrics shown here may not be 100% true to colour.

**Brand**

Kvadrat

**Composition**

90% new wool worsted  
10% nylon

**Durability**

100,000 Martindale

**Pilling**

3-4 (ISO 1-5)

**Lightfastness**

5

**Warranty**

10 years

**Produced In**

United Kingdom

**Sustainability**

EU Ecolabel, Greenguard gold,  
HPD, EPD

**Width**

Approx. 140 cm  
(Approx. 55")

**Weight**

825 g/lin. m (26.61 oz/ly)

**Fire Test**

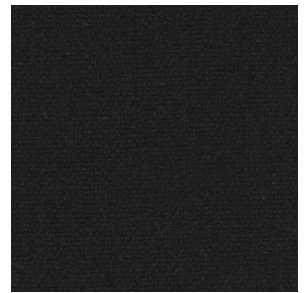
- AS/NZS 1530.3
- BS 5852 crib 5 with treatment
- BS 5852 part 1
- IMO FTP Code 2010 Part 8
- NF D 60 013
- NFPA 260
- SN 198 898 5.3 with treatment
- UNI 9175 11M
- US Cal. Bull. 117-2013
- EN 1021-1/2
- AS/NZS 3837 class 2
- ÖNORM B1/Q1



0365



0370



0190

**Available on**

**Catch**

JH1, JH2,  
JH15, JH13,  
JH14, JH16,  
JH17

**Elefy**

JH29, JH31,  
JH33, JH35,  
JH37

**Betty**

TK3

**In Between**

SK2, SK8,  
SK10

**Pavilion**

AV3, AV4,  
AV12, AV13,  
AV6, AV11,  
AV8, AV14,  
AV10, AV15

**Rely**

HW7-10,  
HW12-15,  
HW17-20,  
HW22-25,  
HW29-32,  
HW35-37,  
HW40-42,  
HW45-47,  
HW50-52,  
HW55-57,  
HW72-75,  
HW77-80,

HW82-85,  
HW87-90,  
HW92-95,  
HW97-100,  
HW102-105  
Seat pad

**Boomerang**  
HM1, HM2

**Loafer**

SC24, SC23,  
SC25, SC26

**Margas**

LC1, LC2,  
LC3

**Mayor**

AJ5, AJ6

**Cloud**

LN1, LN2,  
LN3.2, LN5,  
LN6, LN7

**Develius**

EV1-EV7

**Fly**

SC1, SC2,  
SC3, SC12,  
SC9, SC10

**Inland**

AV22  
AV23

[BACK TO INDEX](#)

Fabric gr. 2

# Steelcut Trio

\* Click [here](#) to see all available colours.

\* Due to variations in screen calibration, the fabrics shown here may not be 100% true to colour.

**Brand**

Kvadrat

**Composition**

90% new wool worsted  
10% nylon

**Durability**

100,000 Martindale

**Pilling**

4 (ISO 1-5)

**Lightfastness**

6-7

**Warranty**

10 years

**Produced In**

United Kingdom

**Sustainability**

EU Ecolabel, Greenguard gold,  
HPD, EPD

**Width**

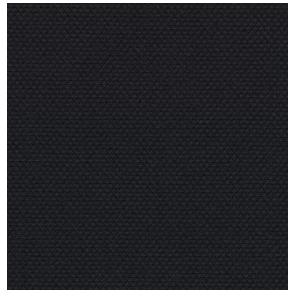
Approx. 140 cm  
(Approx. 55")

**Weight**

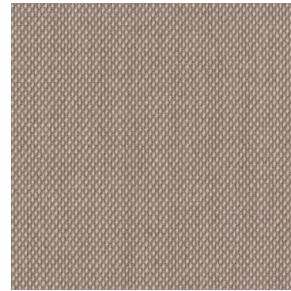
770 g/lin. m (24.84 oz/ly)

**Fire Test**

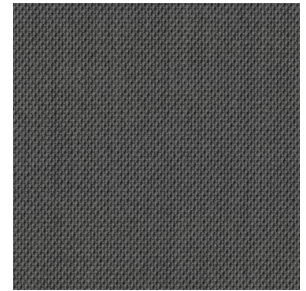
- AS/NZS 1530.3
- BS 5852 crib 5 with treatment
- BS 5852 ignition source 3
- BS 5852 part 1
- IMO FTP Code 2010 Part 8
- NF D 60 013
- NFPA 260
- SN 198 898 5.3 with treatment
- UNI 9175 1IM
- US Cal. Bull. 117-2013
- EN 1021-1/2
- ASTM E84 Class B Unadhered
- ASTM E84 Class B Adhered
- ÖNORM B1/Q1
- AS/NZS 3837 class 2
- GB 50222 B1 with treatment (Chinese)



0195



0213



0153



0253

**Available on**

**Catch**

JH1, JH2,  
JH15, JH13,  
JH14, JH16,  
JH17

**Elefy**

JH29, JH31,  
JH33, JH35,  
JH37

**Betty**

TK3

**In Between**

SK2, SK8,  
SK10

**Pavilion**

AV3, AV4,  
AV12, AV13,  
AV6, AV11,  
AV8, AV14,  
AV10, AV15

**Rely**

HW7-10,  
HW12-15,  
HW17-20,  
HW22-25,  
HW29-32,  
HW35-37,  
HW40-42,  
HW45-47,  
HW50-52,  
HW55-57,  
HW72-75,  
HW77-80,

HW82-85,  
HW87-90,  
HW92-95,  
HW97-100,  
HW102-105  
Seat pad

**Boomerang**

HM1, HM2

**Loafer**

SC24, SC23,  
SC25, SC26

**Margas**

LC1, LC2,  
LC3

**Mayor**

AJ5, AJ6

**Cloud**

LN1, LN2,  
LN3.2, LN5,  
LN6, LN7

**Develius**

EV1-EV7

**Fly**

SC1, SC2,  
SC3, SC12,  
SC9, SC10

**Inland**

AV22  
AV23

[BACK TO INDEX](#)

Fabric gr. 3

# Sunniva

\* Click [here](#) to see all available colours.

\* Due to variations in screen calibration, the fabrics shown here may not be 100% true to colour.

**Brand**

Kvadrat

**Composition**

58% new wool  
25% viscose  
8% linen  
5%nylon  
4% polyester

**Durability**

50,000 Martindale

**Pilling**

3 (ISO 1-5)

**Lightfastness**

5

**Warranty**

10 years

**Produced In**

Norway

**Width**

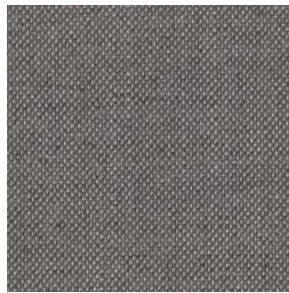
Approx. 140 cm  
(Approx. 55")

**Weight**

593 g/lin. m  
(19.13 oz/ly)

**Fire Test**

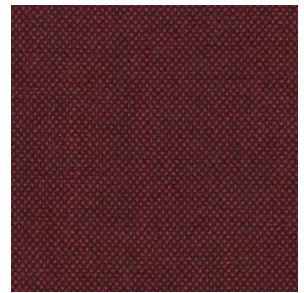
- BS 5852 crib 5 with treatment
- IMO FTP Code 2010:Part 8 with treatment
- NFPA 260
- US Cal. Bull. 117-2013
- EN 1021-1/2
- As/NZS 2827 class 2



0242



1079



0662

**Available on**

**Catch**

JH1, JH2,  
JH15, JH13,  
JH14, JH16,  
JH17

**Elefy**

JH29, JH31,  
JH33, JH35,  
JH37

**In Between**

SK2, SK8,  
SK10

**Pavilion**

AV3, AV4,  
AV12, AV13,  
AV6, AV11,  
AV8, AV14,  
AV10, AV15

**Boomerang**

HM1, HM2

**Little Petra**

VB1, VB2

**Pouf**

ATD1

**Wulff**

ATD2, ATD3

**Loafer**

SC24, SC23,  
SC25, SC26

**Mayor**

AJ5, AJ6

**Cloud**

LN1, LN2,  
LN3.2, LN5,  
LN6, LN7

**Develius**

EV1-EV7

**Fly**

SC1, SC2,  
SC3, SC12,  
SC9, SC10

**Inland**

AV22  
AV23

Fabric gr. 2

# Tonus

\* Click [here](#) to see all available colours.

\* Due to variations in screen calibration, the fabrics shown here may not be 100% true to colour.

**Brand**

Kvadrat

**Composition**

90% new wool  
10% Helanca

**Durability**

100,000 Martindale

**Pilling**

3 (ISO 1-5)

**Lightfastness**

5

**Warranty**

10 years

**Produced In**

United Kingdom

**Sustainability**

EU Ecolabel,  
Greenguard Gold,  
HPD, EPD

**Width**

Approx. 140 cm (Approx. 55")

**Weight**

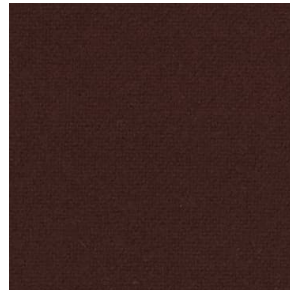
665 g/lin. m (21.45 oz/ly)

**Fire Test**

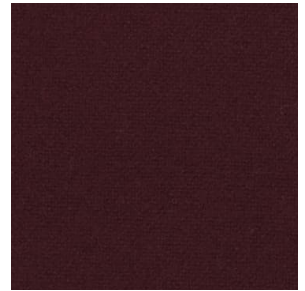
- AS/NZS 1530.3
- BS 5852 crib 5 with treatment
- BS 5852 part 1
- IMO FTP Code 2010 Part 8
- NF D 60 013
- NFPA 260
- SN 198 898 5.3 with treatment
- Uni 9175 11M
- US Cal. Bull. 117-2013
- EN 1021-1/2
- AS/NZS3837 class 3
- ÖNORM B1/Q1



0100



0374



0610



0764

**Available on**

**Catch**

JH1, JH2,  
JH15, JH13,  
JH14, JH16,  
JH17

**Elefy**

JH29, JH31,  
JH33, JH35,  
JH37

**Betty**

TK3

**In Between**

SK2, SK8,  
SK10

**Pavilion**

AV3, AV4,  
AV12, AV13,  
AV6, AV11,  
AV8, AV14,  
AV10, AV15

**Boomerang**

HM1, HM2

**Rely**

HW7-10,  
HW12-15,  
HW17-20,  
HW22-25,  
HW29-32,  
HW35-37,  
HW40-42,  
HW45-47,  
HW50-52,  
HW55-57,  
HW72-75,  
HW77-80,

HW82-85,  
HW87-90,  
HW92-95,  
HW97-100,  
HW102-105  
Seat pad

**Little Petra**

VB1, VB2

**Pouf**

ATD1

**Wulff**

ATD2, ATD3

**Margas**

LC1, LC2,  
LC3

**Loafer**

SC24, SC23,  
SC25, SC26

**Mayor**

AJ5, AJ6

**Cloud**

LN1, LN2,  
LN3.2, LN5,  
LN6, LN7

**Fly**

SC1, SC2,  
SC3, SC12,  
SC9, SC10

**Inland**

AV22  
AV23

[BACK TO INDEX](#)

Fabric gr. 2

# Uniform Melange

\* Click [here](#) to see all available colours.

\* Due to variations in screen calibration, the fabrics shown here may not be 100% true to colour.

**Brand**

Kvadrat

**Composition**

68% new wool

22% nylon

10% polyester

**Durability**

100,000 Martindale

**Pilling**

4 (ISO 1-5)

**Lightfastness**

6 (ISO 1-8)

**Produced In**

Holland

**Sustainability**

Greenguard Gold,

HPD, EPD

**Width**

165 cm (65")

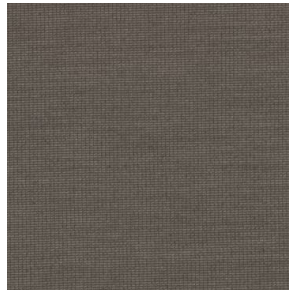
**Weight**

870 g/lin. m

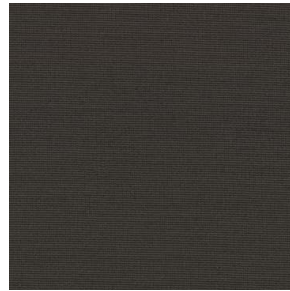
(28.06 oz/ly)

**Fire Test**

- AS/NZS 1530.3
- AS/NZS 3837
- BS 5852 crib 5 with treatment
- BS 5852 part 1
- IMO FTP Code 2010 Part 8
- NFPA 260
- US Cal. Bull. 117-2013
- DIN 4102 B2
- EN 1021-1/2
- ASTM E84 Class A Unadhered



0263



0293



0553

**Available on****Isole**

NN1A-NN1G

[BACK TO INDEX](#)

Fabric gr. 3

# Vidar

\* Click [here](#) to see all available colours.

\* Due to variations in screen calibration, the fabrics shown here may not be 100% true to colour.

**Brand**

Kvadrat

**Composition**

94% new wool  
6% nylon

**Durability**

100,000 Martindale

**Pilling**

4 (ISO 1-5)

**Lightfastness**

7

**Warranty**

10 years

**Produced In**

Norway

**Sustainability**

EU Ecolabel, Greenguard Gold, HPD, EPD

**Width**

Approx. 140 cm (Approx. 55")

**Weight**

765 g/lin. m (24.67 oz/ly)

**Fire Test**

- BS 5752 crub 5 with treatment
- BS 5852 part 1
- IMO FTP Code 2010 Part 8
- NF D 60 013
- NFPA 260
- UNI 9175 11M
- US Cal. Bull. 117-2013
- EN 1021-1/2
- AS/NZA 3837 class 2
- GB 50222 B1 with treatment (Chinese)
- SN 198 898 5.3 with treatment
- IMO FTP Code 2010 Part 7 with treatment



0323



0333



0723



0693



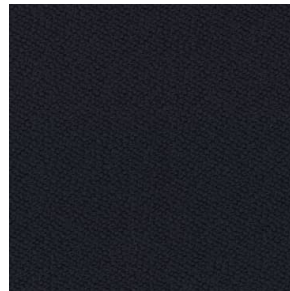
0133



0943



0582



0554

**Available on**

**Catch**

JH1, JH2, JH15, JH13, JH14, JH16, JH17

**Elefy**

JH29, JH31, JH33, JH35, JH37

**Betty**

TK3

**In Between**

SK2, SK8, SK10

**Pavilion**

AV3, AV4, AV12, AV13, AV6, AV11, AV8, AV14, AV10, AV15

**Boomerang**

HM1, HM2

**Rely**

HW7-10, HW12-15, HW17-20, HW22-25, HW29-32, HW35-37, HW40-42, HW45-47, HW50-52, HW55-57, HW72-75, HW77-80, HW82-85,

HW87-90, HW92-95, HW97-100, HW102-105  
Seat pad

**Little Petra**

VB1, VB2

**Pouf**

ATD1

**Wulff**

ATD2, ATD3

**Loafer**

SC24, SC23, SC25, SC26

**Mayor**

AJ5, AJ6

**Cloud**

LN1, LN2, LN3.2, LN5, LN6, LN7

**Develius**

EV1-EV7

**Margas**

LC1, LC2, LC3

**Fly**

SC1, SC2, SC3, SC12, SC9, SC10

**Inland**

AV22, AV23

[BACK TO INDEX](#)



Fabric gr. 3

# Zero

\* Click [here](#) to see all available colours.

\* Due to variations in screen calibration, the fabrics shown here may not be 100% true to colour.

**Brand**

Kvadrat

**Composition**

65% cotton  
20% polyacrylic  
15% polyester

**Durability**

70,000 Martindale

**Pilling**

5 (ISO 1-5)

**Lightfastness**

5-6 (ISO 1-8)

**Warranty**

2 years

**Produced In**

Belgium

**Sustainability**

Greenguard Gold,  
HPD

**Width**

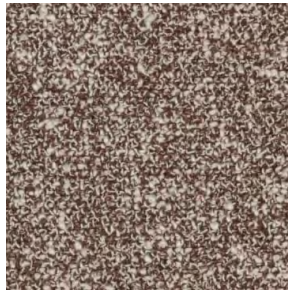
140 cm  
(Approx. 55")

**Weight**

740 g/lin. m  
(23.87 oz/ly)

**Fire Test**

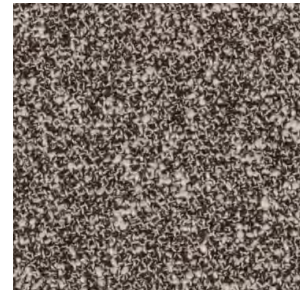
- BS 5852 crib 5 with treatment
- EN 1021-1



0009



0010



0011



0013

**Available on**

**Catch**

JH1, JH2,  
JH15, JH13,  
JH14, JH16,  
JH17

**Elefy**

JH29, JH31,  
JH33, JH35,  
JH37

**In Between**

SK2, SK8,  
SK10

**Pavilion**

AV3, AV4,  
AV12, AV13,  
AV6, AV11,  
AV8, AV14,  
AV10, AV15

**Rely**

HW7-10,  
HW12-15,  
HW17-20,  
HW22-25,  
HW29-32,  
HW35-37,

HW40-42,  
HW45-47,  
HW50-52,  
HW55-57,  
HW72-75,  
HW77-80,  
HW82-85,  
HW87-90,  
HW92-95,  
HW97-100,  
HW102-105  
Seat pad

**Betty**

TK3

**Boomerang**

HM1, HM2

**Little Petra**

VB1, VB2

**Pouf**

ATD1

**Wulff**

ATD2, ATD3

**Margas**

LC1, LC2,  
LC3

**Loafer**

SC24, SC23,  
SC25, SC26

**Mayor**

AJ5, AJ6

**Develius**

EV1-EV7

**Cloud**

LN1, LN2,  
LN3.2, LN5,  
LN6, LN7

**Fly**

SC1, SC2,  
SC3, SC12,  
SC9, SC10

**Inland**

AV22  
AV23

[BACK TO INDEX](#)

Fabric gr. 3

# Atelier Moderne

\* Click [here](#) to see all available colours.

\* Due to variations in screen calibration, the fabrics shown here may not be 100% true to colour.

**Brand**

Dedar

**Composition**

92% linen

8% nylon/polyamid

**Durability**

40,000 Martindale

**Pilling**

3 / ISO 12945

**Lightfastness**

5

**Produced In**

Italy

**Width**

143 cm (56.3")

**Weight**

700 g/ml

**Fire Test**

- EN 1021 (part ½)
- FR-UK BS5852 CIGAR. TEST
- FR-UK BS5852 CIG. MATCH with treatment
- US. Cal. Bull 117-2013 w. treatment



001 Fondente



004 Avorio



010 Celadon



012 Quasinerio

**Available on**

**In Between**  
SK2, SK8,  
SK10

**Pavilion**  
AV3, AV4,  
AV12, AV13,  
AV6, AV11,  
AV8, AV14,  
AV10, AV15

**Rely**  
HW7-10,  
HW12-15,  
HW17-20,  
HW22-25,  
HW29-32,  
HW35-37,  
HW40-42,  
HW45-47,  
HW50-52,  
HW55-57,  
HW72-75,  
HW77-80,

HW82-85,  
HW87-90,  
HW92-95,  
HW97-100,  
HW102-105  
Seat pad

**Betty**  
TK3

**Boomerang**  
HM1, HM2

**Margas**  
LC1, LC2,  
LC3

**Mayor**  
AJ5, AJ6

**Cloud**  
LN1, LN2,  
LN3.2, LN5,  
LN6, LN7

[BACK TO INDEX](#)

Fabric gr. 4

# Atlas

\* Click [here](#) to see all available colours.

\* Due to variations in screen calibration, the fabrics shown here may not be 100% true to colour.

**Brand**

Dedar

**Composition**

72% wool

27% cotton

1% nylon/polyamid

**Durability**

26.000 Martindale

**Pilling**

4/5 / ISO 12945

**Lightfastness**

4/5

**Produced In**

Italy

**Width**

128 cm (50.39")

**Weight**

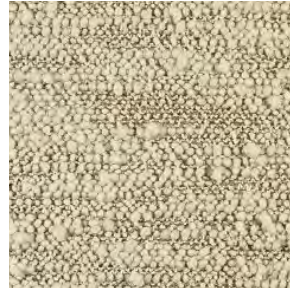
890 g/ml

**Fire Test**

- EN 1021 (part ½)
- FR-UK BS5852 CIGAR. TEST
- FR-UK BS5852 CIG. MATCH
- FR-UK BS5852 CRIB 5
- US. Cal. Bull 117-2013 w. treatment



001 Avorio



002 Naturale

---

**Available on**

**In Between**  
SK2, SK8,  
SK10

**Pavilion**  
AV3, AV4,  
AV12, AV13,  
AV6, AV11,  
AV8, AV14,  
AV10, AV15

**Betty**  
TK3

**Boomerang**  
HM1, HM2

**Wulff**  
ATD2, ATD3

**Mayor**  
AJ5, AJ6

**Little Petra**  
VB1, VB2

**Pouf**  
ATD1

Fabric gr. 4

# Karakorum

\* Click [here](#) to see all available colours.

\* Due to variations in screen calibration, the fabrics shown here may not be 100% true to colour.

**Brand**

Dedar

**Composition**

42% wool  
33% viscose  
24% cotton  
1% nylon/polyamid

**Durability**

40.000 Martindale

**Pilling**

4/5 / ISO 12945

**Lightfastness**

6

**Produced In**

Italy

**Width**

130 cm (51.18")

**Weight**

1040 g/ml

**Fire Test**

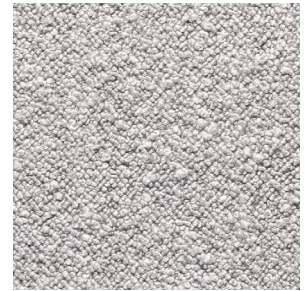
- EN 1021 (part ½)
- FR-UK BS5852 CIGAR. TEST
- FR-UK BS5852 CIG. MATCH
- FR-UK BS5852 CRIB 5
- US. Cal. Bull 117-2013



001 Ivory



003 Duna



004 Perla

**Available on**

**Catch**

JH1, JH2,  
JH15, JH13,  
JH14, JH16,  
JH17

**Elefy**

JH29, JH31,  
JH33, JH35,  
JH37

**Betty**

TK3

**In Between**

SK2, SK8,  
SK10

**Pavilion**

AV3, AV4,  
AV12, AV13,  
AV6, AV11,  
AV8, AV14,  
AV10, AV15

**Margas**

LC1, LC2,  
LC3

**Rely**

HW7-10,  
HW12-15,  
HW17-20,  
HW22-25,  
HW29-32,  
HW35-37,  
HW40-42,  
HW45-47,  
HW50-52,  
HW55-57,  
HW72-75,  
HW77-80,  
HW82-85,

HW87-90,  
HW92-95,  
HW97-100,  
HW102-105  
Seat pad

**Boomerang**

HM1, HM2

**Little Petra**

VB1, VB2

**Pouf**

ATD1

**Wulff**

ATD2, ATD3

**Loafer**

SC24, SC23,  
SC25, SC26

**Mayor**

AJ5, AJ6

**Cloud**

LN1, LN2,  
LN3.2, LN5,  
LN6, LN7

**Develius**

EV1-EV7

**Fly**

SC1, SC2,  
SC3, SC12,  
SC9, SC10

**Inland**

AV22  
AV23

[BACK TO INDEX](#)

Fabric gr. 4

# Karandash

\* Click [here](#) to see all available colours.

\* Due to variations in screen calibration, the fabrics shown here may not be 100% true to colour.

**Brand**

Dedar

**Composition**

70% wool  
30% cotton

**Durability**

40.000 Martindale

**Pilling**

4/5 / ISO 12945

**Lightfastness**

5 / 6

**Produced In**

Italy

**Width**

130 cm (51.18")

**Weight**

885 g/ml

**Fire Test**

- EN 1021 (part ½)
- FR-UK BS5852 CIGAR. TEST
- FR-UK BS5852 CIG. MATCH
- FR-UK BS5852 CRIB 5
- US. Cal. Bull 117-2013



005 Acier



006 Cobalt

**Available on**

**Catch**

JH1, JH2,  
JH15, JH13,  
JH14, JH16,  
JH17

**Elefy**

JH29, JH31,  
JH33, JH35,  
JH37

**In Between**

SK2, SK8,  
SK10

**Pavilion**

AV3, AV4,  
AV12, AV13,  
AV6, AV11,  
AV8, AV14,  
AV10, AV15

**Betty**

TK3

**Rely**

HW7-10,  
HW12-15,  
HW17-20,  
HW22-25,  
HW29-32,  
HW35-37,  
HW40-42,  
HW45-47,  
HW50-52,  
HW55-57,  
HW72-75,  
HW77-80,  
HW82-85,

HW87-90,  
HW92-95,  
HW97-100,  
HW102-105  
Seat pad

**Boomerang**

HM1, HM2

**Little Petra**

VB1, VB2

**Pouf**

ATD1

**Margas**

LC1, LC2,  
LC3

**Wulff**

ATD2, ATD3

**Loafer**

SC24, SC23,  
SC25, SC26

**Mayor**

AJ5, AJ6

**Cloud**

LN1, LN2,  
LN3.2, LN5,  
LN6, LN7

**Fly**

SC1, SC2,  
SC3, SC12,  
SC9, SC10

**Inland**

AV22  
AV23

[BACK TO INDEX](#)

Fabric gr. 3

# Nimbus

\* Click [here](#) to see all available colours.

\* Due to variations in screen calibration, the fabrics shown here may not be 100% true to colour.

## Brand

Dedar

## Composition

70% WO

15% CO

10% PA

5% PES

## Durability

&gt; 40.000 Martindale

## Produced in

Italy

## Width

140cm

## Weight

1040 g/ml

## Fire test

- FR - UK BS5852 CIGAR. TEST
- Upholstery FR - UK BS5852 CIG/
- MATCH Upholstery FR-UK BS5852
- CRIB 5 Upholtery FR - CAL TB 117 Upholstery

---

## Available on

### Elefy

JH29, JH31, JH33, JH35, JH37

### In Between

SK2, SK8, SK10

### Pavilion

AV3, AV4, AV12, AV13, AV6, AV11, AV8, AV14, AV10, AV15

### Rely

HW7-10, HW12-15, HW17-20, HW22-25, HW29-32, HW35-37, HW40-42, HW45-47, HW50-52, HW55-57, HW72-75, HW77-80, HW82-85, HW87-90, HW92-95, HW97-100, HW102-105, Seat pad

### Betty

TK3

### Boomerang

HM1, HM2

### Little Petra

VB1 VB2, ATD1 Wulff, ATD2 ATD3

### Margas

LC1, LC2, LC3

### Loafer

SC23 SC24, SC25 SC26

### Inland

AV22, AV23

### Mayor

AJ5 AJ6

### Cloud

LN1, LN2, LN3.2, LN5, LN6, LN7

### Develius

EV1-EV7

### Fly

SC1, SC2, SC3, SC12, SC9, SC10

[BACK TO INDEX](#)

Fabric gr. 4

# Serafino

\* Click [here](#) to see all available colours.

\* Due to variations in screen calibration, the fabrics shown here may not be 100% true to colour.

**Brand**

Dedar

**Composition**

38% cotton  
33% viscose  
26% linen  
3% nylon/polyamid

**Durability**

29.000 Martindale

**Pilling**

3

**Lightfastness**

Light Colours: 6/7  
Dark Colours: 4

**Produced In**

Italy

**Width**

132 cm (51.97")

**Weight**

870 g/ml

**Fire Test**

- EN 1021 (part ½)
- FR-UK BS5852 CIGAR. TEST w. treatment
- FR-UK BS5852 CIG. MATCH w. treatment
- FR-UK BS5852 CRIB 5 w. treatment
- US. Cal. Bull 117-2013



002 Snow

---

**Available on**

**In Between**  
SK2, SK8,  
SK10

**Pavilion**  
AV3, AV4,  
AV12, AV13,  
AV6, AV11,  
AV8, AV14,  
AV10, AV15

**Rely**  
HW7-10,  
HW12-15,  
HW17-20,  
HW22-25,  
HW29-32,  
HW35-37,  
HW40-42,  
HW45-47,  
HW50-52,  
HW55-57,  
HW72-75,

HW77-80,  
HW82-85,  
HW87-90,  
HW92-95,  
HW97-100,  
HW102-105  
Seat pad

**Betty**  
TK3

**Boomerang**  
HM1, HM2

**Margas**  
LC1, LC2,  
LC3

**Little Petra**  
VB1, VB2

**Pouf**  
ATD1

**Wulff**  
ATD2, ATD3

**Loafer**  
SC24, SC23,  
SC25, SC26

**Mayor**  
AJ5, AJ6

**Inland**  
AV22  
AV23

Fabric gr. 3

# Svevo

\* Click [here](#) to see all available colours.

\* Due to variations in screen calibration, the fabrics shown here may not be 100% true to colour.

## Brand

Dedar

## Composition

44% linen

26% wool

18% viscose

12% polyamide

## Durability

40.000 Martindale

## Pilling

3/4 ISO 12945

## Lightfastness

6 / 6

## Width

140 cm

## Weight

761 g/ml

## Fire Test

- BS 5852 (part 0)
- BS 5852 (part 1)
- Us. Cal. Bull 117-2013
- BS 5852 Source 5



002 Linen

---

## Available on

### Cloud

LN1, LN2,  
LN3.2, LN5,  
LN6, LN7

### Margas

LC1, LC2,  
LC3



Fabric gr. 1

# Linara

\* Click [here](#) to see all available colours.

\* Due to variations in screen calibration, the fabrics shown here may not be 100% true to colour.

**Brand**

Romo

**Composition**

63% cotton  
37% linen

**Durability**

36.000 martindale

**Lightfastness**

6

**Produced In**

Italy

**Sustainability**

Oeko-tex

**Width**

140 cm. (55.1")

**Weight**

400 (g/m<sup>2</sup>)

**Fire Test**

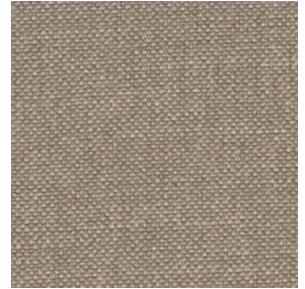
- BS 5852 PART 1 IGN 0 CIGARETTE
- BS 5852 PART 1 IGN 1 MATCH
- UKBS 5852 PART 1 EXEMPT (WITH IGN 5 INTERLINER)
- EN1021 PART 1 UPHOLSTERY
- EN1021 PARTS 1&2 UPHOLSTERY
- NFPA260
- CAL117



266 Stone



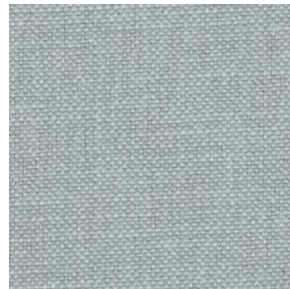
263 Coffee Bean



153 Earth



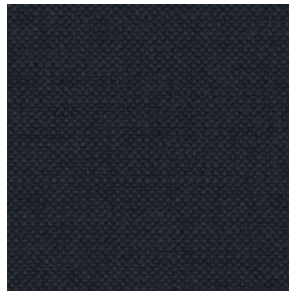
220 Sand



252 China Blue



223 Anthracite



164 Ebony



249 Spinach

**Available on**

**Elefy**

JH29, JH31,  
JH33, JH35,  
JH37

**In Between**

SK2, SK8,  
SK10

**Pavilion**

AV3, AV4,  
AV12, AV13,  
AV6, AV11,  
AV8, AV14,  
AV10, AV15

**Rely**

HW7-10,  
HW12-15,  
HW17-20,  
HW22-25,  
HW29-32,  
HW35-37,  
HW40-42,  
HW45-47,  
HW50-52,  
HW55-57,  
HW72-75,  
HW77-80,

HW82-85,  
HW87-90,  
HW92-95,  
HW97-100,  
HW102-105  
Seat pad

**Betty**

TK3

**Boomerang**

HM1, HM2

**Loafer**

SC24, SC23,  
SC25, SC26

**Margas**

LC1, LC2,  
LC3

**Mayor**

AJ5, AJ6

**Develius**

EV1-EV7

**Cloud**

LN1, LN2,  
LN3.2, LN5,  
LN6, LN7

**Fly**

SC1, SC2,  
SC3, SC12,  
SC9, SC10

**Inland**

AV22  
AV23

Fabric gr. 2

# Loop

\* Click [here](#) to see all available colours.

\* Due to variations in screen calibration, the fabrics shown here may not be 100% true to colour.

**Brand**

Romo

**Composition**

46% acrylic  
23% wool  
15% cotton  
12% nylon/polyamid  
4% polyester

**Durability**

60.000 martindale

**Produced In**

Italy

**Width**

140 cm. (55.1")

**Weight**

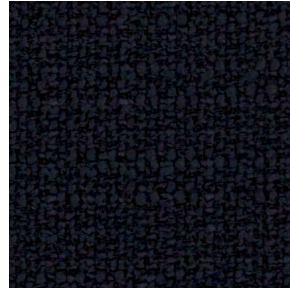
620 (g/m<sup>2</sup>)

**Fire Test**

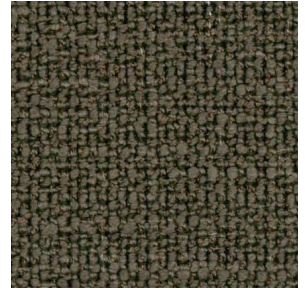
- EN1021 PART 1 UPHOLSTERY
- NFPA260
- CAL117



33 Cream



40 Marine



36 Olive

**Available on**

**Catch**

JH1, JH2,  
JH15, JH13,  
JH14, JH16,  
JH17

**Elefy**

JH29, JH31,  
JH33, JH35,  
JH37

**Betty**

TK3

**In Between**

SK2, SK8,  
SK10

**Pavilion**

AV3, AV4,  
AV12, AV13,  
AV6, AV11,  
AV8, AV14,  
AV10, AV15

**Rely**

HW7-10,  
HW12-15,  
HW17-20,  
HW22-25,  
HW29-32,  
HW35-37,  
HW40-42,  
HW45-47,  
HW50-52,  
HW55-57,  
HW72-75,  
HW77-80,  
HW82-85,

HW87-90,  
HW92-95,  
HW97-100,  
HW102-105  
Seat pad

**Boomerang**

HM1, HM2

**Little Petra**

VB1, VB2

**Pouf**

ATD1

**Wulff**

ATD2, ATD3

**Loafer**

SC24, SC23,  
SC25, SC26

**Mayor**

AJ5, AJ6

**Cloud**

LN1, LN2,  
LN3.2, LN5,  
LN6, LN7

**Develius**

EV1-EV7

**Fly**

SC1, SC2,  
SC3, SC12,  
SC9, SC10

**Inland**

AV22  
AV23

[BACK TO INDEX](#)

Fabric gr. 2

# Ruskin

\* Click [here](#) to see all available colours.

\* Due to variations in screen calibration, the fabrics shown here may not be 100% true to colour.

**Brand**

Romo

**Composition**

70% viscose

15% linen

10% wool

5% nylon/polyamid

**Durability**

60.000 martindale

**Produced In**

Italy

**Width**

140 cm. (55.1")

**Weight**

600 (g/m<sup>2</sup>)

**Fire Test**

- BS 5852 PART 1 IGN 0 CIGARETTE
- BS 5852 PART 1 EXEMPT (WITH IGN 5 INTERLINER)
- EN1021 PART 1 UPHOLSTERY
- EN1021 PARTS 1&2 UPHOLSTERY
- NFPA260



07 Silver Birch



14 Zirconium



33 Nori

**Available on**

**Catch**

JH1, JH2,  
JH15, JH13,  
JH14, JH16,  
JH17

**Elefy**

JH29, JH31,  
JH33, JH35,  
JH37

**In Between**

SK2, SK8,  
SK10

**Pavilion**

AV3, AV4,  
AV12, AV13,  
AV6, AV11,  
AV8, AV14,  
AV10, AV15

**Rely**

HW7-10,  
HW12-15,  
HW17-20,  
HW22-25,  
HW29-32,  
HW35-37,  
HW40-42,  
HW45-47,  
HW50-52,  
HW55-57,  
HW72-75,  
HW77-80,

HW82-85,  
HW87-90,  
HW92-95,  
HW97-100,  
HW102-105  
Seat pad

**Betty**

TK3

**Boomerang**  
HM1, HM2

**Loafer**

SC24, SC23,  
SC25, SC26

**Margas**

LC1, LC2,  
LC3

**Mayor**

AJ5, AJ6

**Cloud**

LN1, LN2,  
LN3.2, LN5,  
LN6, LN7

**Develius**

EV1-EV7

**Fly**

SC1, SC2,  
SC3, SC12,  
SC9, SC10

**Inland**

AV22  
AV23

[BACK TO INDEX](#)

Fabric gr. 4

# La Toile Du Peintre

\* Click [here](#) to see all available colours.

\* Due to variations in screen calibration, the fabrics shown here may not be 100% true to colour.

## Brand

Pierre Frey

## Composition

64% Cotton  
16% Acrylic  
7% Polyamide  
5% Mohair  
5% Polyester  
3% Viscose

## Durability

12.000 Martindale

## Width

142 cm / 55.91 inch

## Weight

1318 g/ml

## Fire test

- BS5852 Cigarette  
& Match test
- NFPA 260
- Class 1

---

## Available on

### Margas

LC1,  
LC2,  
LC3

Fabric gr. 3

# Skai Parotega

\* Click [here](#) to see all available colours.

\* Due to variations in screen calibration, the fabrics shown here may not be 100% true to colour.

**Brand**

Continental

**Composition**

Vinyl

**Durability**

300,000 Martindale

**Width**

1370 mm

**Available on****Catch**JH1, JH2,  
JH15, JH13,  
JH14, JH16,  
JH17**Elefy**JH29, JH31,  
JH33, JH35,  
JH37**In Between**SK2, SK8,  
SK10**Pavilion**AV3, AV4,  
AV12, AV13,  
AV6, AV11,  
AV8, AV14,  
AV10, AV15**Rely**HW7-10,  
HW12-15,  
HW17-20,  
HW22-25,  
HW29-32,  
HW35-37,HW40-42,  
HW45-47,  
HW50-52,  
HW55-57,  
HW72-75,  
HW77-80,  
HW82-85,  
HW87-90,  
HW92-95,  
HW97-100,  
HW102-105,  
Seat pad**Betty**

TK3

**Boomerang**

HM1, HM2

**Cloud**LN1, LN2,  
LN3.2, LN5,  
LN6, LN7**Develius**

EV1-EV7

**Fly**SC1, SC2,  
SC3, SC12,  
SC9, SC10[BACK TO INDEX](#)

Fabric gr. 2

# Ritz

\* Click [here](#) to see all available colours.

\* Due to variations in screen calibration, the fabrics shown here may not be 100% true to colour.

**Brand**

Nevotex

**Composition**

83% cotton  
9% modal  
8% polyester

**Durability**

100.000 martindale

**Pilling**

> 4 (ISO 105-X12)

**Lightfastness**

≥ 5 (ISO 105-B02)

**Produced In**

Estonia

**Sustainability**

ISO 9001, ISO 14001,  
Oeko-tex 2005070

**Width**

140 cm (55")

**Weight**

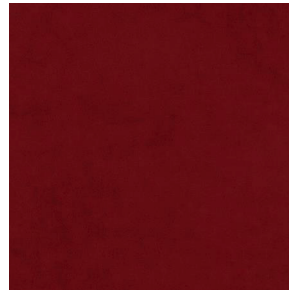
460 g/m<sup>2</sup>

**Fire Test**

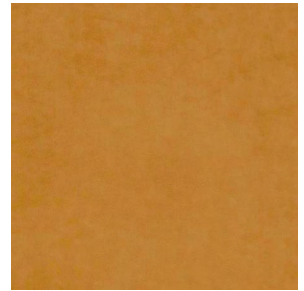
• EN 1021 - 1



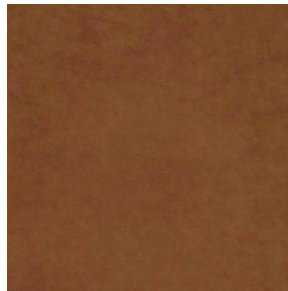
3804 Mörkt vinröd



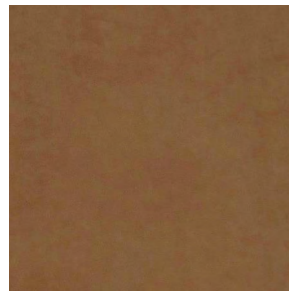
3247 Mörkröd



1620 Sand



4700 Mörkbeige



4744 Kaki



8469 Brun



0504 Grå-grön



4441 Ljusbeige

**Available on**

**Catch**

JH1, JH2,  
JH15, JH13,  
JH14, JH16,  
JH17

**Elefy**

JH29, JH31,  
JH33, JH35,  
JH37

**In Between**

SK2, SK8,  
SK10

**Pavilion**

AV3, AV4,  
AV12, AV13,  
AV6, AV11,  
AV8, AV14,  
AV10, AV15

**Rely**

HW7-10,  
HW12-15,  
HW17-20,  
HW22-25,  
HW29-32,  
HW35-37,  
HW40-42,  
HW45-47,  
HW50-52,  
HW55-57,  
HW72-75,  
HW77-80,

HW82-85,  
HW87-90,  
HW92-95,  
HW97-100,  
HW102-105  
Seat pad

**Betty**

TK3

**Boomerang**  
HM1, HM2

**Loafer**

SC24, SC23,  
SC25, SC26

**Mayor**

AJ5, AJ6

**Margas**

LC1, LC2,  
LC3

**Cloud**

LN1, LN2,  
LN3.2, LN5,  
LN6, LN7

**Develius**

EV1-EV7

**Fly**

SC1, SC2,  
SC3, SC12,  
SC9, SC10

**Inland**

AV22  
AV23

[BACK TO INDEX](#)

Fabric gr. 2

# Velvet

\* Click [here](#) to see all available colours.

\* Due to variations in screen calibration, the fabrics shown here may not be 100% true to colour.

**Brand**  
&Tradition

**Composition**  
83% cotton  
9% modal  
8% polyester

**Durability**  
100.000 martindale

**Pilling**  
> 4 (ISO 105-X12)

**Lightfastness**  
≥ 5 (ISO 105-B02)

**Produced In**  
Estonia

**Sustainability**  
ISO 9001, ISO 14001,  
Oeko-tex 2005070

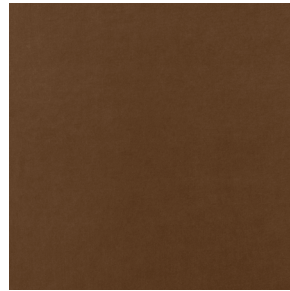
**Width**  
140 cm

**Weight**  
460 g/m<sup>2</sup>

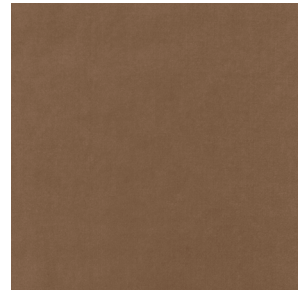
**Fire Test**  
• EN 1021 - 1



01 Forest



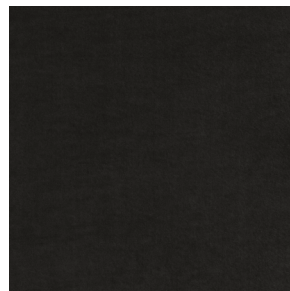
07 Cinnamon



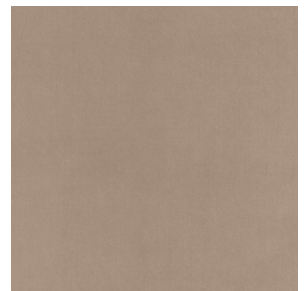
08 Almond



10 Twilight



11 Stone



13 Ivory

**Available on**

**Catch**

JH1, JH2,  
JH15, JH13,  
JH14, JH16,  
JH17

**Elefy**

JH29, JH31,  
JH33, JH35,  
JH37

**In Between**

SK2, SK8,  
SK10

**Pavilion**

AV3, AV4,  
AV12, AV13,  
AV6, AV11,  
AV8, AV14,  
AV10, AV15

**Rely**

HW7-10,  
HW12-15,  
HW17-20,  
HW22-25,  
HW29-32,  
HW35-37,  
HW40-42,  
HW45-47,  
HW50-52,  
HW55-57,  
HW72-75,  
HW77-80,

HW82-85,  
HW87-90,  
HW92-95,  
HW97-100,  
HW102-105  
Seat pad

**Betty**

TK3

**Boomerang**

HM1, HM2

**Loafer**

SC24, SC23,  
SC25, SC26

**Mayor**

AJ5, AJ6

**Margas**

LC1, LC2,  
LC3

**Cloud**

LN1, LN2,  
LN3.2, LN5,  
LN6, LN7

**Develius**

EV1-EV7

**Fly**

SC1, SC2,  
SC3, SC12,  
SC9, SC10

**Inland**

AV22  
AV23

[BACK TO INDEX](#)

# Hot Madison

\* Click [here](#) to see all available colours.

\* Due to variations in screen calibration, the fabrics shown here may not be 100% true to colour.

**Brand**

JAB

**Composition**

63% cotton

37% linen

**Durability**

55.000 martindale

**Pilling**

4

**Lightfastness**

4-5

**Produced In**

Italy

**Width**

140 cm (55")

**Fire Test**

- EN 1021 (part1)
- Crib 5 treatable
- NFPA 260
- US. Cal. Bull 117-2013



021



093



094



884



133

---

**Available on**

**Fly**

SC1, SC2,  
SC3, SC12,  
SC9, SC10



# Sheepskin

\* Click [here](#) to see all available colours.

\* Due to variations in screen calibration, the fabrics shown here may not be 100% true to colour.

## Brand

Skandilock

## Composition (Raw material)

Australian Crossbred  
Lamb/sheep

## Pilling

Dry: 4-5 / Wet: 3-4

## Lightfastness

ISO 105-B02: 2014  
Classic collection: >5  
Standard collection: >5  
Limited collection: >5  
Off-White (non-dyed): 4-5  
Ruby: 4-5  
Moonlight: 3-4

## Sustainability

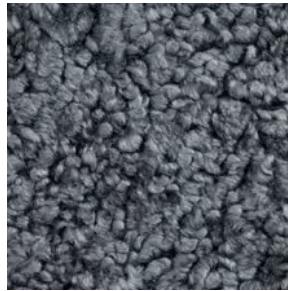
TBC

## Weight (thickness)

1-3 mm

## Fire Test

- EN1021-1
- EN1021-21
- CAL. TB117 (US)
- FAR §23.853 (AUS)



14 Charcoal



07 Sahara



02 Offwhite



09 Moonlight

---

## Available on

**Little Petra**  
VB1, VB2

**Pouf**  
ATD1

**Wulff**  
ATD2, ATD3

**Loafer**  
SC24, SC23,  
SC25, SC26

**Mayor**  
AJ5, AJ6

# *Leather*

Leather

# Noble

\* Due to variations in screen calibration, the fabrics shown here may not be 100% true to colour.

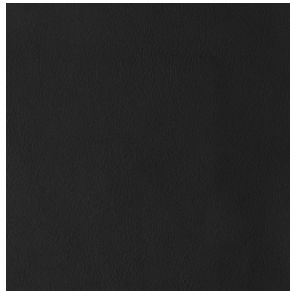
**Brand**  
&Tradition

**Composition**  
Aniline leather

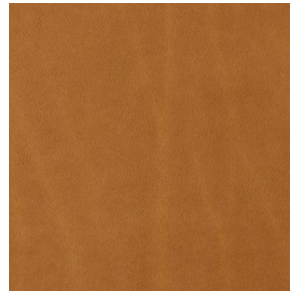
**Lightfastness**  
EN ISO 105-B02

**Thickness**  
1.0 – 1.2

- Fire test**
- BS 5852 NI/0-1, EN 1021-1/2,
  - California TB 117



Noble Black



Noble Cognac

---

**Available on**

**Catch**

JH1, JH2,  
JH15, JH13,  
JH14, JH16,  
JH17

**Elefy**

JH29, JH31,  
JH33, JH35,  
JH37

**In Between**

SK2, SK8,  
SK10

**Pavilion**

AV3, AV4,  
AV12, AV13,  
AV6, AV11,  
AV8, AV14,  
AV10, AV15

**Rely**

HW7-10,  
HW12-15,  
HW17-20,  
HW22-25,  
HW29-32,  
HW35-37,

HW40-42,  
HW45-47,  
HW50-52,  
HW55-57,  
HW72-75,  
HW77-80,  
HW82-85,  
HW87-90,  
HW92-95,  
HW97-100,  
HW102-105,  
Seat pad

**Betty**

TK3

**Loafer**

SC23 SC24  
SC25 SC26

**Inland**

AV22  
AV23

**Mayor**

AJ5 AJ6

**Cloud**

LN1, LN2,  
LN3.2, LN5,  
LN6, LN7

**Develius**

EV1-EV7

**Fly**

SC1, SC2,  
SC3, SC12,  
SC9, SC10

[BACK TO INDEX](#)

Leather

# Tailor

\* Due to variations in screen calibration, the fabrics shown here may not be 100% true to colour.

**Brand**  
&Tradition

**Composition**  
Semi-aniline leather

**Lightfastness**  
EN ISO 105-B02

**Thickness**  
1.0-1.2

- Fire test**
- BS 5852 NI/0-1,
  - EN 1021-1/2,
  - California TB 117



Tailor Black



Tailor Cognac

---

**Available on**

|                                                                                                             |                                                                                       |                                                                                                                                                             |                     |
|-------------------------------------------------------------------------------------------------------------|---------------------------------------------------------------------------------------|-------------------------------------------------------------------------------------------------------------------------------------------------------------|---------------------|
| <b>Catch</b><br>JH1, JH2,<br>JH15, JH13,<br>JH14, JH16,<br>JH17 Elefy<br>JH29, JH31,<br>JH33, JH35,<br>JH37 | <b>Pavilion</b><br>AV3, AV4,<br>AV12, AV13,<br>AV6, AV11,<br>AV8, AV14,<br>AV10, AV15 | HW35-37,<br>HW40-42,<br>HW45-47,<br>HW50-52,<br>HW55-57,<br>HW72-75,<br>HW77-80,<br>HW82-85,<br>HW87-90,<br>HW92-95,<br>HW97-100,<br>HW102-105,<br>Seat pad | <b>Betty</b><br>TK3 |
| <b>In Between</b><br>SK2, SK8,<br>SK10                                                                      | <b>Rely</b><br>HW7-10,<br>HW12-15,<br>HW17-20,<br>HW22-25,<br>HW29-32,                |                                                                                                                                                             |                     |

[BACK TO INDEX](#)

Leather

# Elmosoft

\* Click [here](#) to see all available colours.

\* Due to variations in screen calibration, the fabrics shown here may not be 100% true to colour.

**Brand**

Elmo Leather

**Composition**

**(Raw material)**

Grain leather from Scandinavian cattle

**Durability**

**(Tear strength)**

DIN 53329-A / 20 N

**Lightfastness**

6

**Produced In**

Sweden

**Sustainability**

Clean water tanning technology

**Width (Thickness)**

1.1-1.3 mm

**Fire Test**

- ASTM E 662 SMP 800-C
- BS 5852 crib 5
- CA TB 117-2013
- Chines B1
- DIN 4102 - 1 (B1)
- DIN 53438 part 3
- ECE R118
- ECE R118 Annex 7 (May 2020)
- EN 1021 - 1,2
- IMO 2010 FTP Code Part 8 (IMO652)
- ISO 1716
- ISO 3795
- ISO 8191 - 1,2
- NF P 92-503
- Önorm B 3825
- RDWC-CP1-04
- UNI 9175



Elmosoft Black



Elmosoft Cognac

**Available on**

**Elefy**

JH29, JH31, JH33, JH35, JH37

**Elefy**

JH29, JH31, JH33, JH35, JH37

**Pavilion**

AV3, AV4, AV12, AV13, AV6, AV11, AV8, AV14, AV10, AV15

HW35-37, HW40-42, HW45-47, HW50-52, HW55-57, HW72-75, HW77-80,

**Rely**

HW7-10, HW12-15, HW17-20, HW22-25, HW29-32,

**Betty**

TK3

**Loafer**

SC23 SC24 SC25 SC26

**Mayor**

AJ5 AJ6

**Cloud**

LN1, LN2, LN3.2, LN5, LN6, LN7

**Inland**

AV22 AV23

**In Between**

SK2, SK8, SK10

**Catch**

JH1 JH2 JH15 JH16 JH17

HW82-85, HW87-90, HW92-95, HW97-100, HW102-105, Seat pad

[BACK TO INDEX](#)



**&Tradition**  
Kronprinsessegade 4  
DK - 1306 Copenhagen K  
info@andtradition.com  
andtradition.com

© &Tradition 2022