

## Pacha Collection - Lounge Chair - Fully Upholstered

Designed by Piere Paulin - 1975



### ITEM NUMBER

Pacha lounge chair	10964
Pacha lounge chair - returning swivel	11601

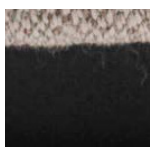
### DESCRIPTION

When the Pacha Collection was designed in 1975, it replaced the austerity of post-war design with a more organic approach, reflecting the changing design style of the time. A joyful modernist, Paulin's low-slung pieces provided a new laid-back perspective on life and his forward-looking, eclectic and sculptural approach to furniture design instantly caught the mood of the swinging 60's. The Pacha lounge chair is fully upholstered, has a painted wood base and is available with a fixed base or returning swivel base.

### Materials & Finishes

#### BASE FINISH

Black Semi Matt (RAL 9005 / Gloss 10) , Pearl Gold (RAL 1035 Pearl beige / Gloss 10)

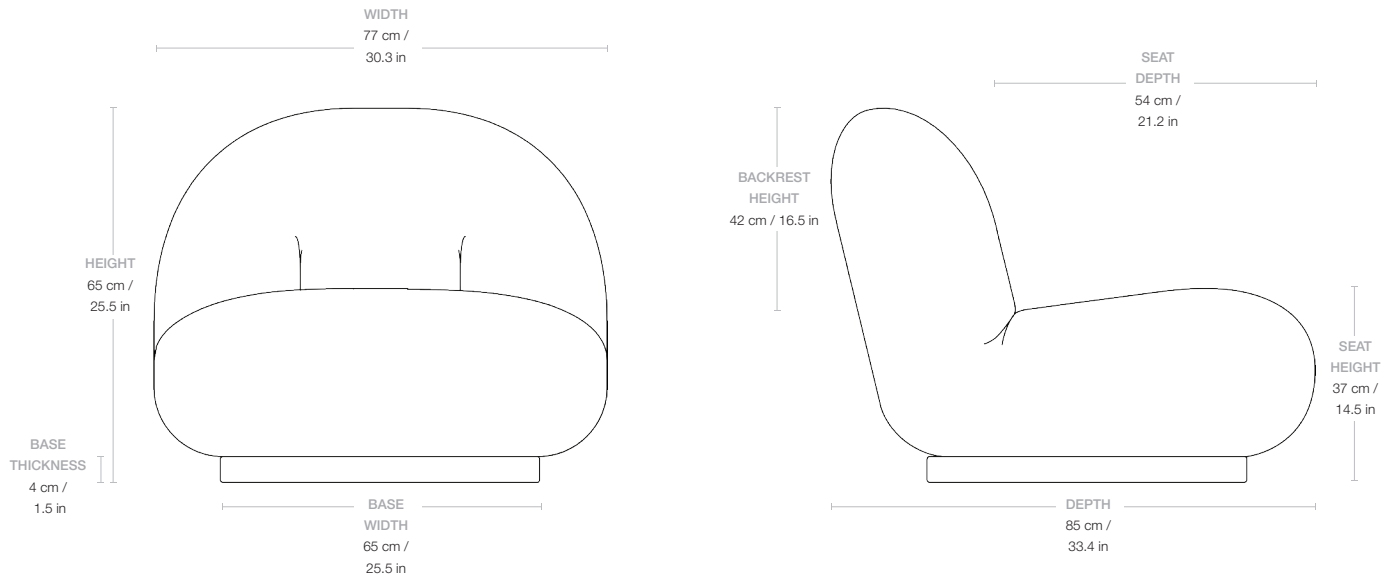


---

**MATERIALS**

Bend plywood (inside structure), cut foam (padding and armrest), laquered MDF (base)

---

**Dimensions**

<b>WIDTH</b>	77 cm / 30.3 in
<b>DEPTH</b>	85 cm / 33.4 in
<b>HEIGHT</b>	65 cm / 25.5 in
<b>SEAT WIDTH</b>	77 cm / 30.3 in
<b>SEAT DEPTH</b>	54 cm / 21.2 in
<b>SEAT HEIGHT</b>	37 cm / 14.5 in
<b>BACKREST HEIGHT</b>	42 cm / 16.5 in

---

**Weight**

**TOTAL WEIGHT** 21 kg / 21.4 kg (returning swivel) / 46.2 lbs / 47.1 lbs (returning swivel)

---

**Upholstery Consumption**

**X 140 CM FABRIC WIDTH / X 55 IN FABRIC WIDTH**

**FABRIC CONSUMPTION** 280 cm / 110 in

---

## Packaging

<b>NUMBER OF PARCELS</b>	1
<b>PACKAGING LENGTH</b>	86 cm / 33.8 in
<b>PACKAGING WIDTH</b>	88 cm / 34.6 in
<b>PACKAGING HEIGHT</b>	70 cm / 27.5 in
<b>PACKAGING WEIGHT</b>	3 kg / 6.6 lbs
<b>GROSS WEIGHT</b>	24 kg/ 24.4 kg (returning swivel) / 52.9 lbs / 53.7 lbs (returning swivel)

---

## Test & Certifications

<b>TSCA</b>	Yes, title VI Compliant for Formaldehyde
<b>CALIFORNIA TB 117</b>	Yes, US only
<b>BS5852 (CRIB5)</b>	Yes, UK only

---

## Glides

<b>RUBBER GLIDES</b>	Included as standard
----------------------	----------------------

---

<b>KEY FEATURES</b>	The option to create your own modular configurations, see the pricelist for all pre-configured options.
---------------------	---

---

<b>INDIVIDUAL MODULES</b>	Please note that the standard Pacha Lounge chair does not work as a module for configurations. For configurations the Center module needs to be used.
---------------------------	---