

Klip

The Essence of Mobility
and Function



normann
COPENHAGEN

Sharp and Clean Geometrical Design

The new Klip Lamp collection is designed with function in mind. Klip is an elegant and modern collection of wall lamps and clip on lamps that will fit nicely into the smaller nooks, where light is much needed, but space is limited. Adorn the hallway, bookshelf, or bedside with this modern and adaptable lamp collection.

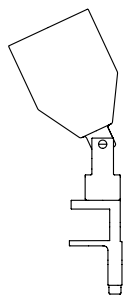
The Klip Lamp has an elegant clip that can easily be attached to any surface by tightening the small knob at the bottom. The clip is equipped with discreet silicone pads, ensuring soft and gentle attachment. The Klip Lamp can therefore easily be moved around and adjusted to the desired setting.



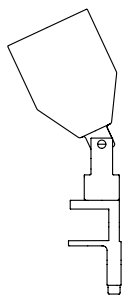
normann

C O P E N H A G E N

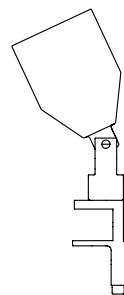
Collection Overview



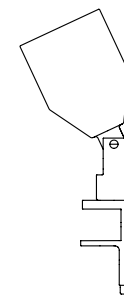
Klip Lamp
Black
H: 32,5 x L: 10 cm



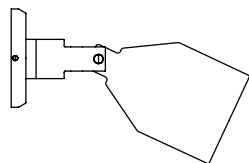
Klip Lamp
White
H: 32,5 x L: 10 cm



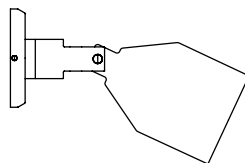
Klip Lamp
Sand
H: 32,5 x L: 10 cm



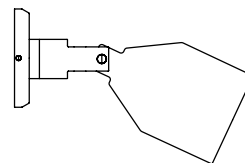
Klip Lamp
Green
H: 32,5 x L: 10 cm



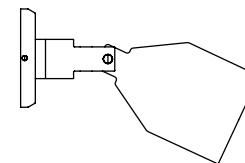
Klip Wall Lamp
Black
H: 15,8 x L: 24,3



Klip Wall Lamp
White
H: 15,8 x L: 24,3



Klip Wall Lamp
Sand
H: 15,8 x L: 24,3



Klip Wall Lamp
Green
H: 15,8 x L: 24,3



Product Facts EU

Description

Klip is an elegant and modern collection of wall lamps and clip-on lamps that will fit nicely into the smaller nooks, where light is much needed, but space is limited. The Klip collection is characterized by its sharp and clean geometrical design cues and its flexibility, making it possible to adjust the light from direct to indirect lighting.

Designer / Year Of Design

Simon Legald / 2022

Material

Powder-coated steel

Construction

Klip Lamp consists of a base and a conical shade in powder-coated steel, which are held together by a 360° turning joint, making it possible to adjust the light in any given direction. Klip Wall Lamp consists of a base and a wall canopy in powder-coated steel, which are held together by a 350° turning joint.

The black and green lamp comes with a black cord and the white and sand-colored lamp comes with a white cord.

Maintenance

Clean with a damp cloth.

Classification

Class II

Ip rating

IP20

Voltage

220-240V ►

normann

C O P E N H A G E N

Klip

► Frequency

50/60Hz

Socket

E14

Max load

2W LED

Cord

2 m plastic cord with switch. The black and green lamp comes with a black cord and the white and sand-colored lamp comes with a white cord

Light source recommended

Art. No.: 504051, LED E14 EU

Power: 2W

CCT: 2700K

Output: 160 lm

Life Span: 15 000 h

CRI: -80

Test

Klip Lamp:

EN IEC 60598-1: 2021

EN 60598-2-4: 2018

Klip Wall Lamp:

EN IEC 60598-2-1: 2021

EN IEC 60598-1: 2021



normann

C O P E N H A G E N



Product Facts US

Description

Klip is an elegant and modern collection of wall lamps and clip-on lamps that will fit nicely into the smaller nooks, where light is much needed, but space is limited. The Klip collection is characterized by its sharp and clean geometrical design cues and its flexibility, making it possible to adjust the light from direct to indirect lighting.

Designer / Year Of Design

Simon Legald / 2022

Material

Powder-coated steel

Construction

Klip Lamp consists of a base and a conical shade in powder-coated steel, which are held together by a 360° turning joint, making it possible to adjust the light in any given direction. Klip Wall Lamp consists of a base and a wall canopy in powder-coated steel, which are held together by a 350° turning joint.

The black and green lamp comes with a black cord and the white and sand-colored lamp comes with a white cord.

Maintenance

Clean with a damp cloth.

Classification

Class II

Ip rating

IP20

Voltage

120V ▶

normann

C O P E N H A G E N

Klip

► **Frequency**

60Hz

Socket

E12

Max load

2W LED

Cord

2 m plastic cord with switch. The black and green lamp comes with a black cord and the white and sand-colored lamp comes with a white cord

Light source recommended

E12 MAX 2W LED



normann

C O P E N H A G E N



Contact

Normann Copenhagen

Niels Hemmingsens Gade 12, 1153 Copenhagen, Denmark
normann@normann-copenhagen.com
+45 35 55 44 59

normann
C O P E N H A G E N